



ADDENDUM NO. 7

February 25, 2020

TO: ALL PLANHOLDERS

RE: HIGH SCHOOL #13

This addendum forms a part of the Contract Documents and modifies the original Bidding Documents dated January 7, 2020. Acknowledge receipt of this Addendum in the space provided on the Bid Form.

Addendum No.7 consists of seven (7) pages, including this cover letter.



1369 Generals Highway | Crownsville, MD 21032 | 410.266.7722 | www.tca-architects.com

25 February 20

Addendum No. 7

High School #13

Howard County Public School System

Bid Number: 016.20.B4

The following is intended to clarify, correct, revise, and restate various parts of the Drawings and Specifications all of which shall form part of this Contract.

Acknowledge receipt of this Addendum in the space provided on the Bid Form. Failure to do so may subject the Bid to be considered as non-responsive.

CHANGES TO SPECIFICATIONS:

23 3113 METAL DUCTS

REVISE Paragraph 2.1.A.1. as follows:

“1. Manufactured spiral round ducts and fittings.”

ADD Paragraph 2.1.A.3. as follows:

“3. All other ductwork and fitting products shall be either shop-fabricated, or factory-fabricated by one of the manufacturers listed for spiral round ducts and fittings.”

CHANGES TO DRAWINGS:

A-430 MASONRY DETAILS

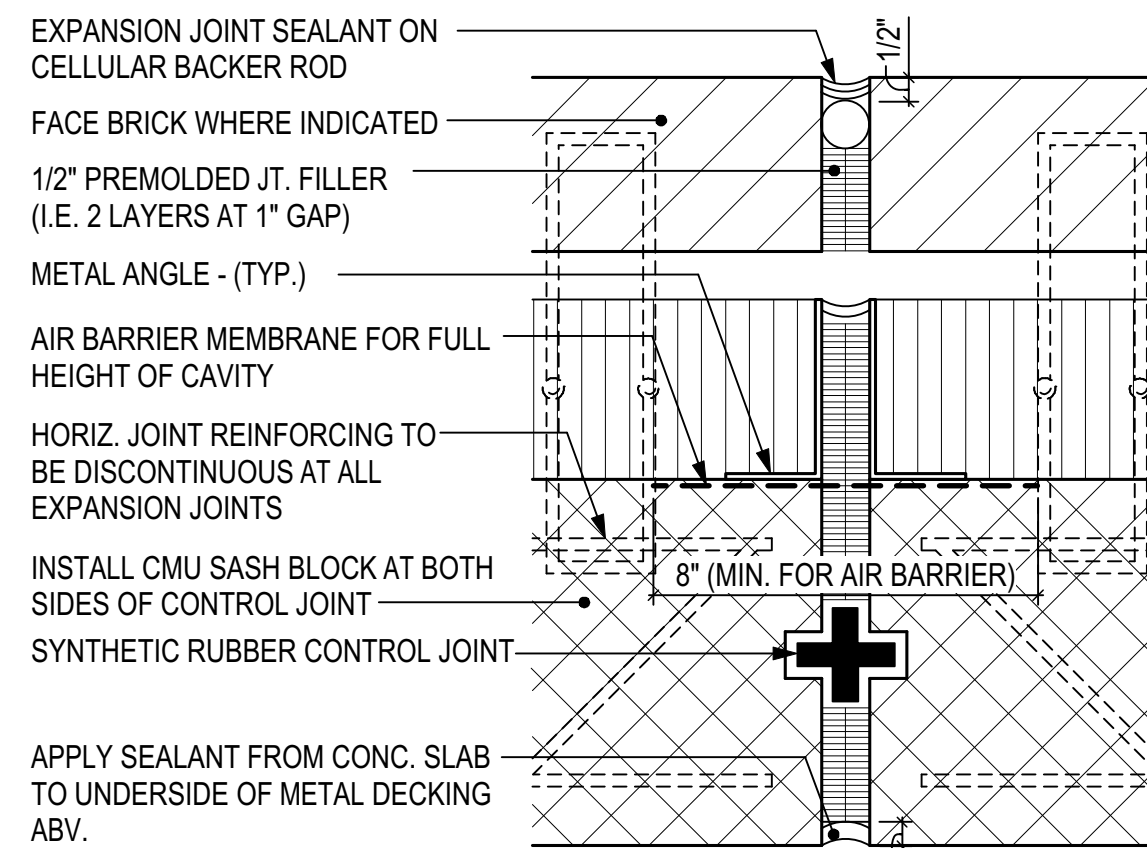
REPLACE Entire drawing with attached A-430 MASONRY DETAILS, dated 25 February 20 to reflect the changes referenced in Addendum #4.

END OF ADDENDUM NO. 7

Attachments dated 25 FEBRUARY 20:

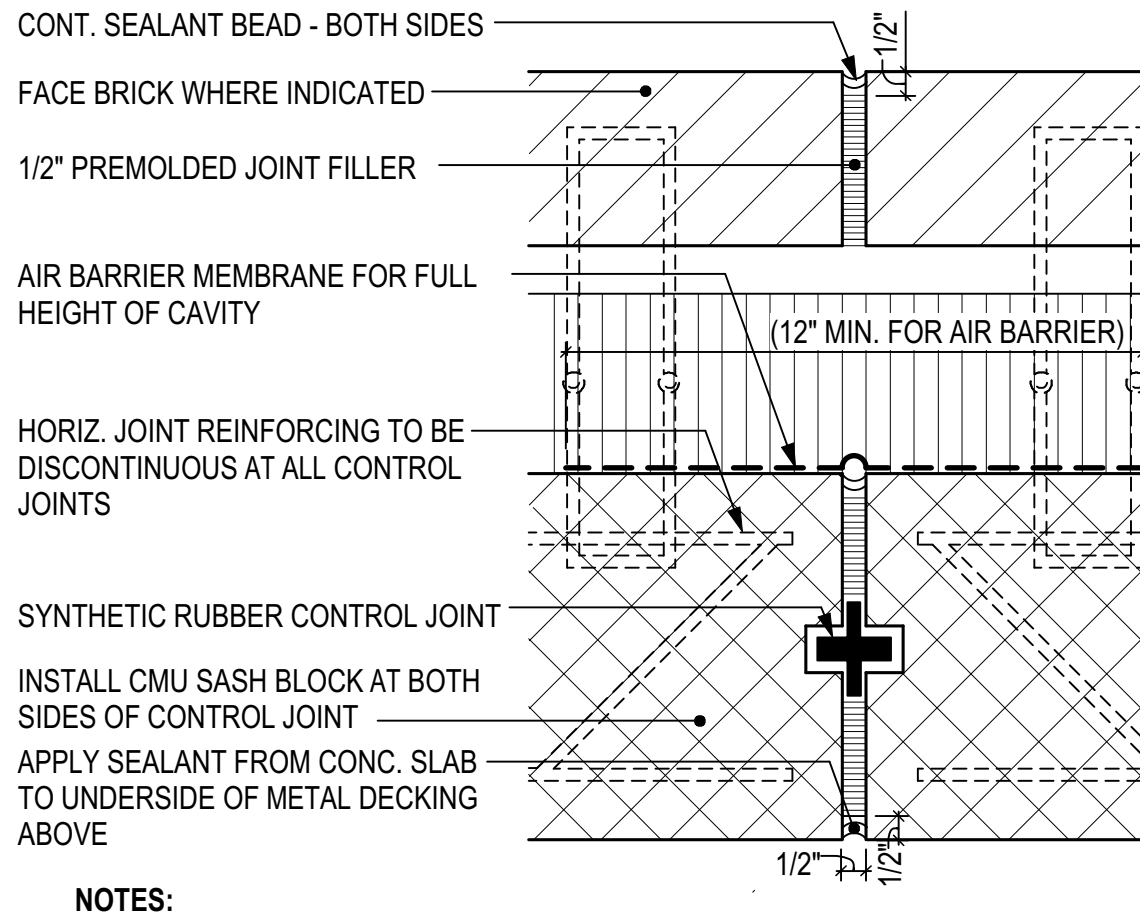
30" x42" drawings

A-430 MASONRY DETAILS



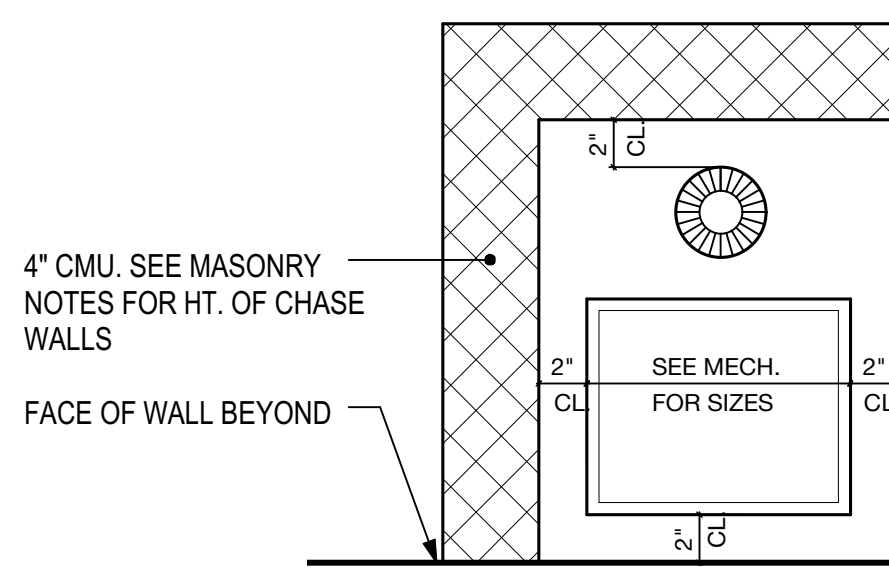
- NOTES:**
1. SEE PLANS AND ELEVATIONS FOR LOCATIONS OF ALL EXPANSION JOINTS
 2. EXPANSION JOINTS TO BE CONTINUOUS FROM FOOTING TO PARAPET
 3. PROVIDE SEALANT AT ALL PENETRATIONS THROUGH AIR BARRIER MEMBRANE

3 EXPANSION JOINT DETAIL
A-430 SCALE: 3" = 1'-0"



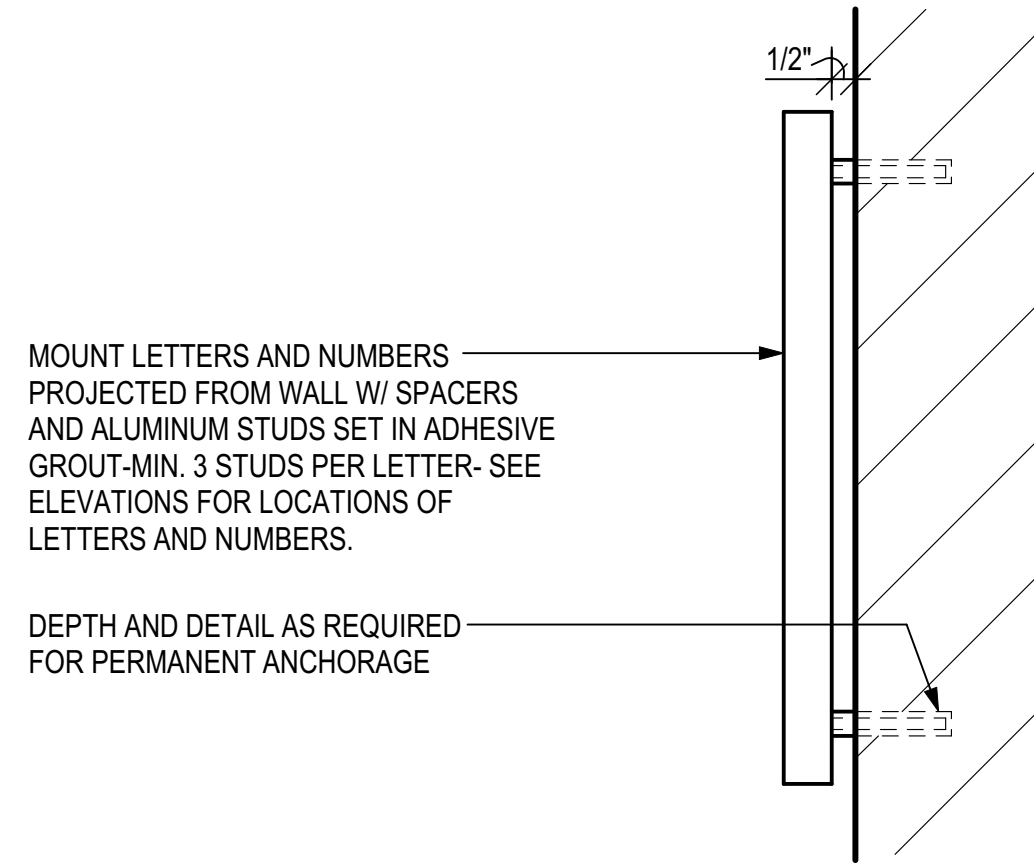
- NOTES:**
1. SEE PLANS AND ELEVATIONS FOR LOCATIONS OF ALL CONTROL JOINTS
 2. CONTROL JOINTS TO BE CONTINUOUS FROM FOOTING TO PARAPET
 3. PROVIDE SEALANT AT ALL PENETRATIONS THROUGH AIR BARRIER MEMBRANE

2 CONTROL JOINT DETAIL
A-430 SCALE: 3" = 1'-0"



- NOTES:**
1. PROVIDE CHASES AROUND ALL PIPES AND DUCTS IN FINISHED SPACES, WHETHER INDICATED ON PLANS OR NOT.
 2. CHASES MUST BE FULL HEIGHT WHEN CONTAINING PVC PIPE FOR REQUIRED CODE SEPARATION FROM RETURN AIR PLENUM SPACES

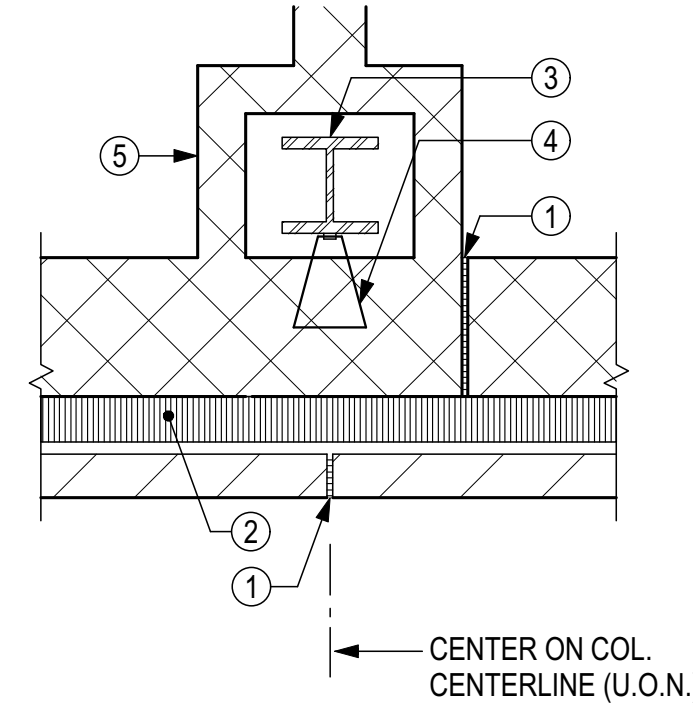
8 MASONRY CHASE DETAIL
A-430 SCALE: 1 1/2" = 1'-0"



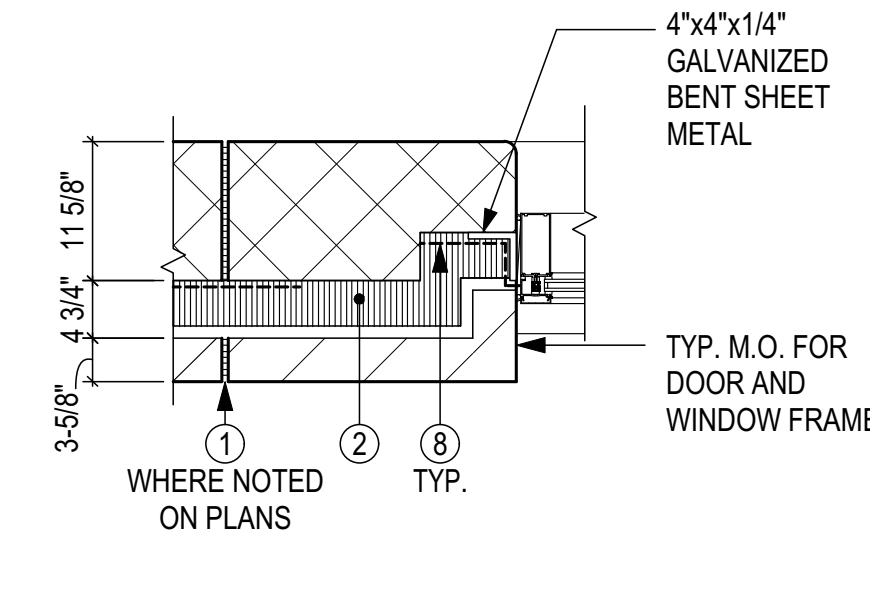
MOUNT LETTERS AND NUMBERS PROJECTED FROM WALL W/ SPACERS AND ALUMINUM STUDS SET IN ADHESIVE GROUT MIN. 3 STUDS PER LETTER - SEE ELEVATIONS FOR LOCATIONS OF LETTERS AND NUMBERS.

DEPTH AND DETAIL AS REQUIRED FOR PERMANENT ANCHORAGE

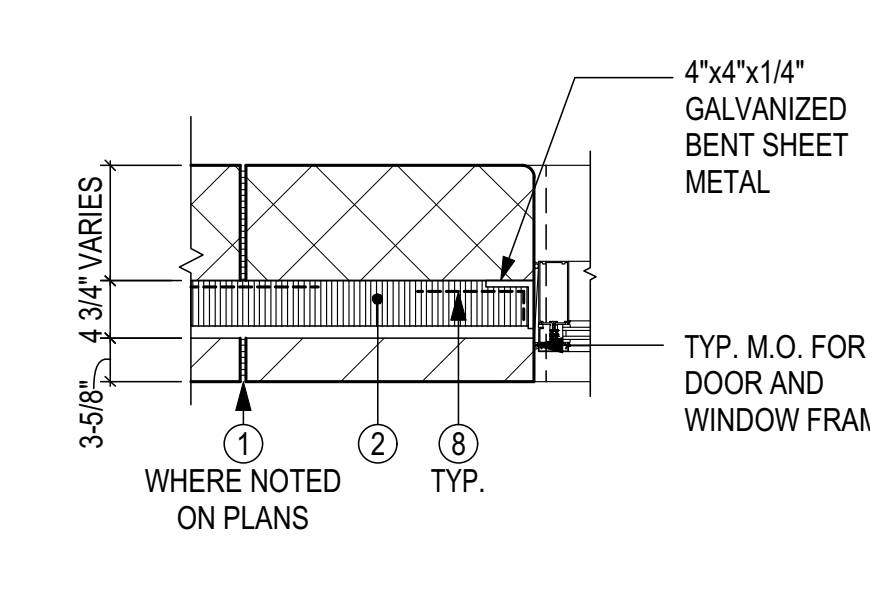
5 BUILDING LETTER DETAIL
A-430 SCALE: 3" = 1'-0"



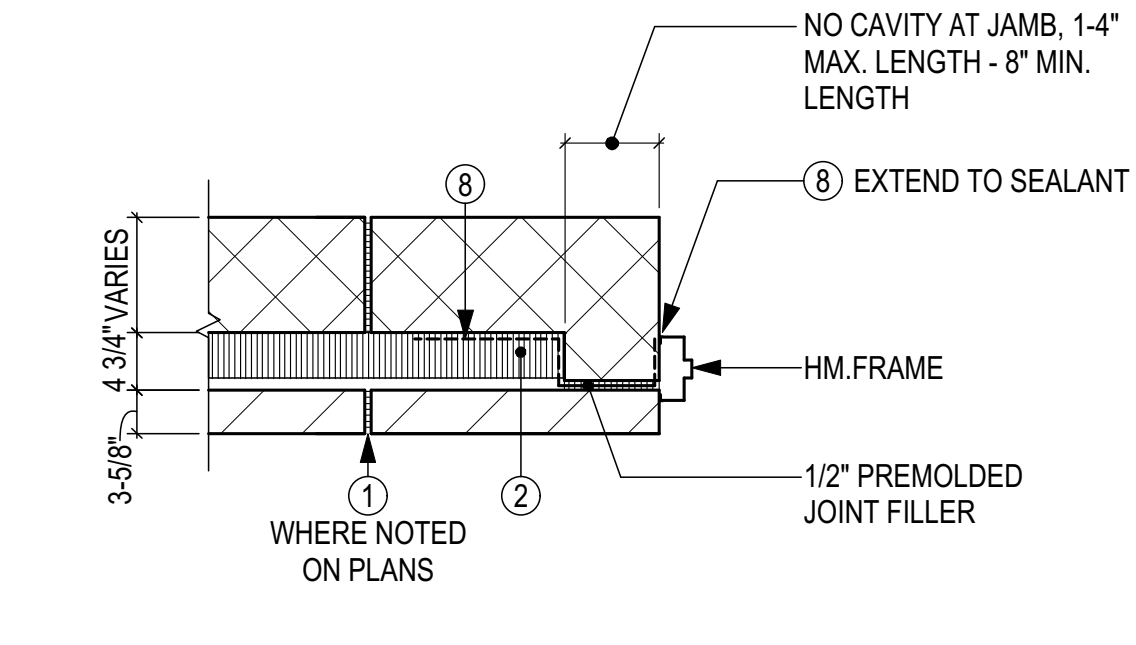
1A CJ AT COLUMN



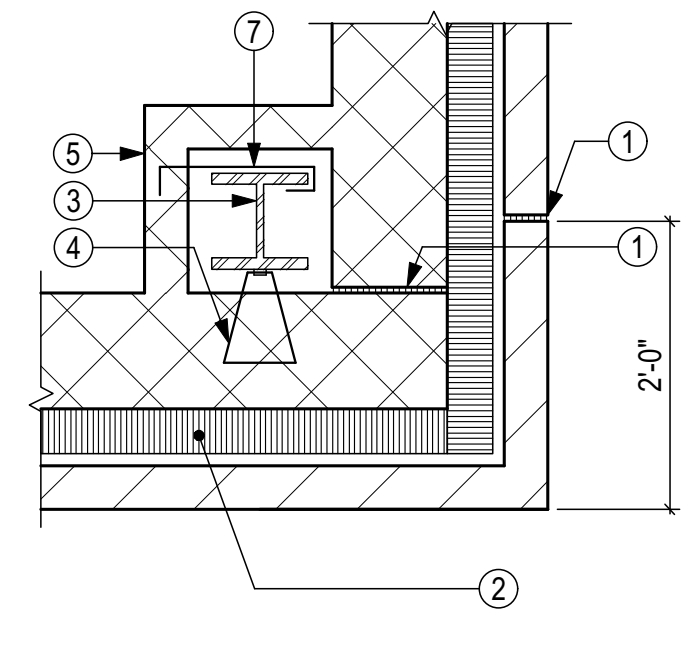
1B EXTERIOR MASONRY OPENING JAMBS
SEE 2/A-611 FOR ADDITIONAL REQUIREMENTS



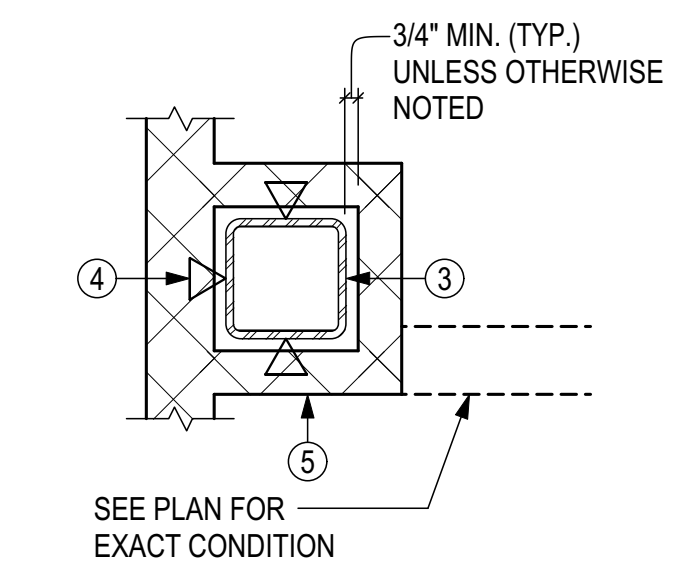
1C EXTERIOR MASONRY OPENING JAMBS
SEE 2/A-611 FOR ADDITIONAL REQUIREMENTS



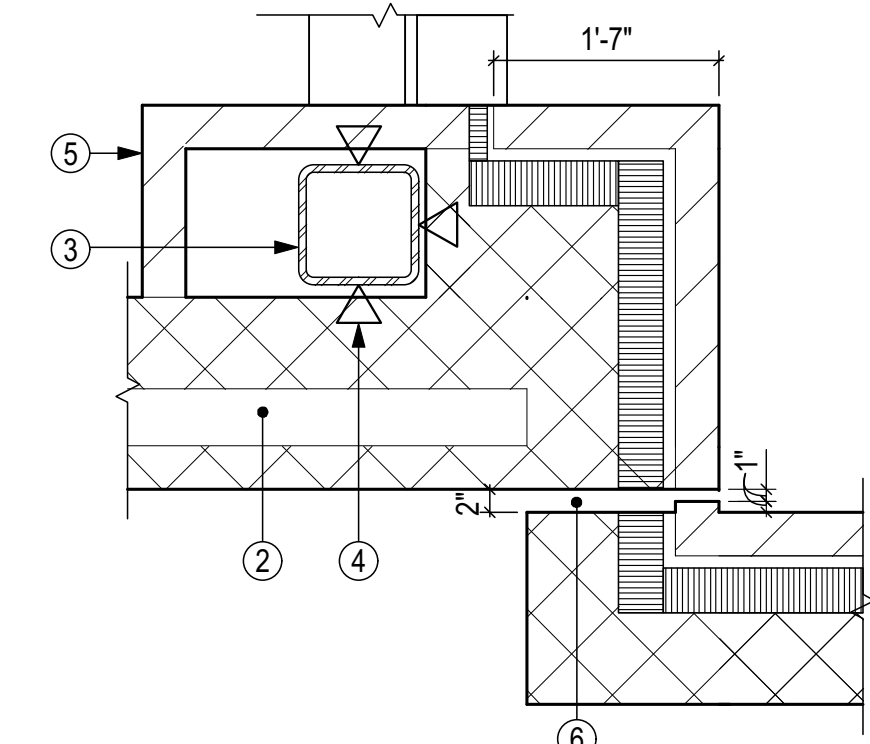
1D EXTERIOR MASONRY OPENING JAMBS
AT EXTERIOR HOLLOW METAL FRAMES AND LOUVERS



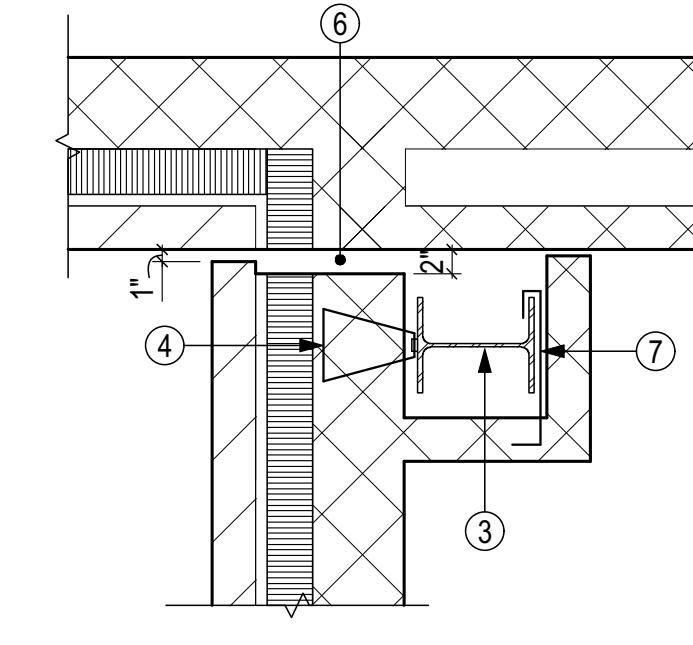
1F EXTERIOR MASONRY CORNER



1G INTERIOR COLUMN



1H EJ AT NORTH ELEVATION

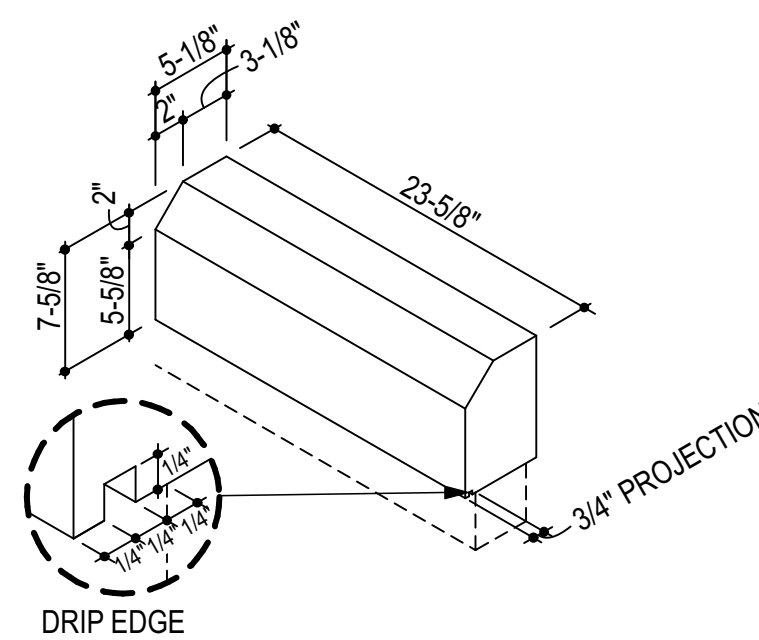


1J EJ AT SOUTH ELEVATION

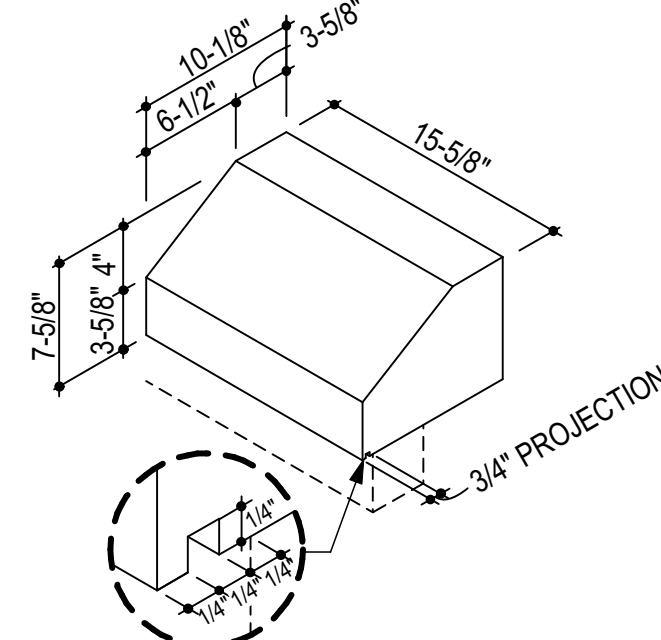
1 MASONRY PLAN DETAILS
A-430 SCALE: 3/4" = 1'-0"

LEGEND

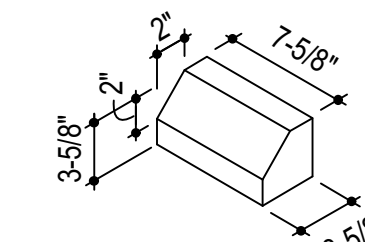
- 1/2" C.J. - SEE DETAIL ON 2/A-430, EXACT LOCATION OF C.J. INDICATED ON PLANS AND ELEV.
- SPRAY POLYURETHANE FOAM (SPF) INSULATION
- TYPICAL-ALL STRUCTURAL STEEL COLUMNS (WITHIN INTERIOR & EXTERIOR WALLS) WRAPPED WITH BUILDING PAPER AND ADJACENT MASONRY HELD 3/4" CLEAR (MIN.) FROM COLUMN
- ADJUSTABLE ANCHORS WITH TRIANGLE TIES AT 16" O.C. VERTICAL - MAX. (TYP.)
- CONFIGURATION OF MASONRY WALLS AND CHASES MAY VARY AT SIMILAR CONDITIONS - SEE FLOOR PLANS
- 1" E.J. - SEE DETAIL ON 3/A-430
- COLUMN FLANGE ANCHORS AT 16" O.C. VERT. MAX. (TYP.)
- AIR BARRIER MEMBRANE 4" MIN.



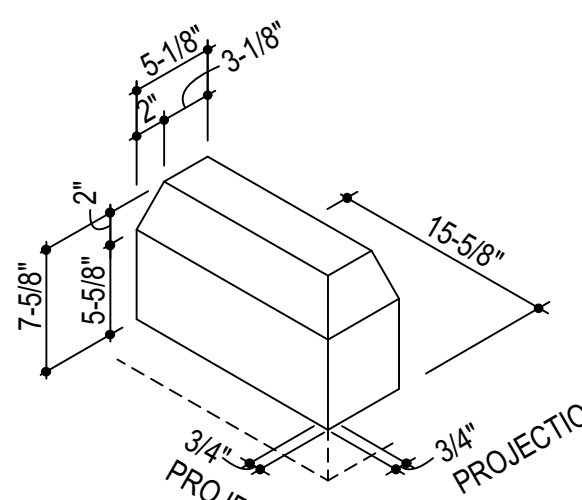
SPECIAL SHAPE NO. 1
[ARCHITECTURAL CMU 1]
(TYP. AT 2ND FLOOR WINDOW SILLS & METAL WALL PANEL SILLS - SEE ARCH. ELEVATIONS AND SECTIONS)



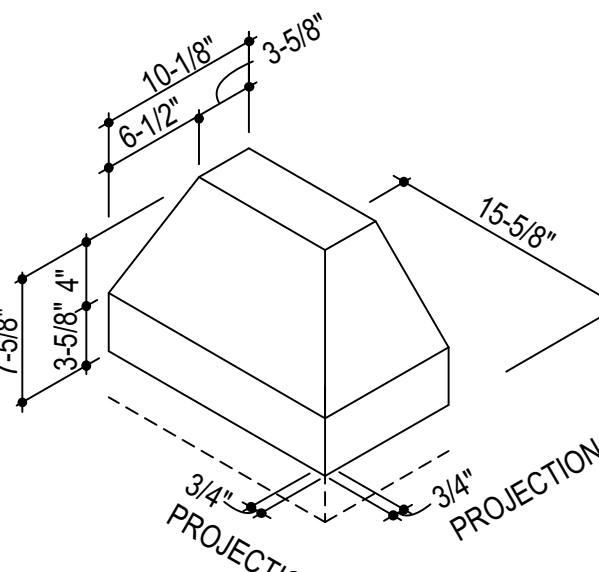
SPECIAL SHAPE NO. 2
[ARCHITECTURAL CMU 2]
(TYP. AT TRANSITION BETWEEN MASONRY WALL AND METAL WALL PANELS - SEE ARCH. ELEVATIONS AND SECTIONS)



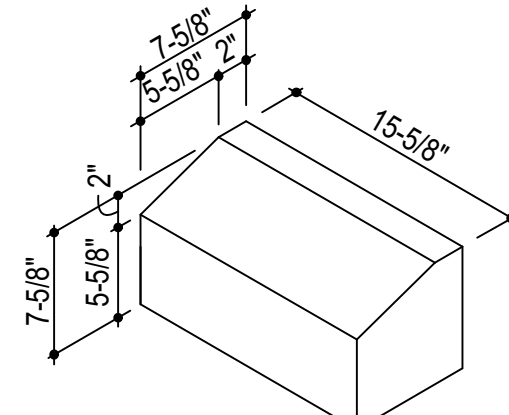
SPECIAL SHAPE NO. 3
[FACE BRICK 'A+B']
(SEE ELEVATIONS AND SECTIONS AT 1ST FLOOR WINDOW SILLS)



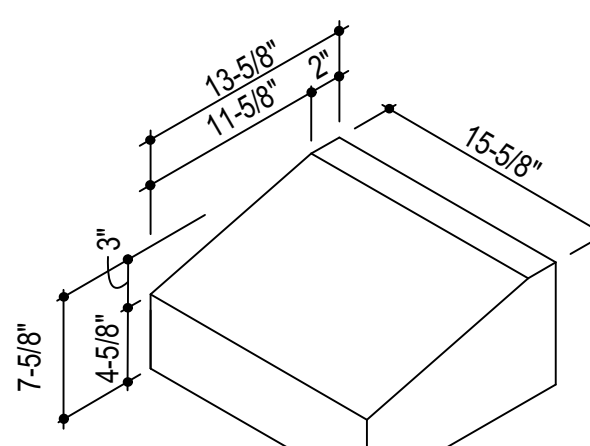
SPECIAL SHAPE NO. 4
[ARCHITECTURAL CMU 1+2]
(TYP. AT EXTERIOR WALL CORNERS)



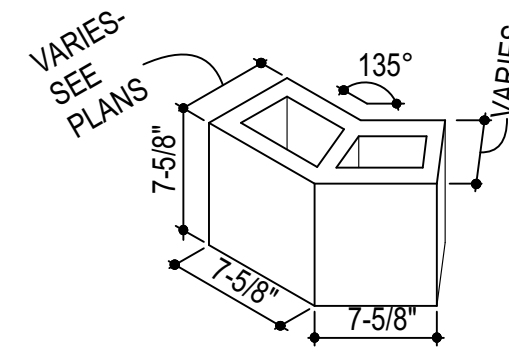
SPECIAL SHAPE NO. 5
[ARCHITECTURAL CMU 1+2]
(TYP. AT EXTERIOR WALL CORNERS)



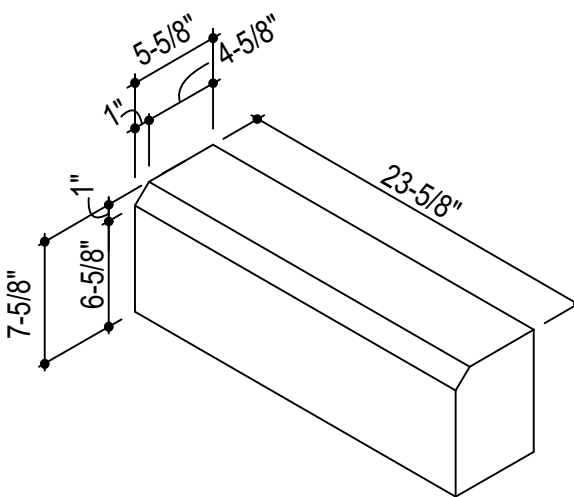
SPECIAL SHAPE NO. 6
[ARCHITECTURAL CMU 1+2]
(SILL AT INSULATED FIBERGLASS LIGHT TRANSMITTING SYSTEM - SEE AREAS 'D' AND 'F')



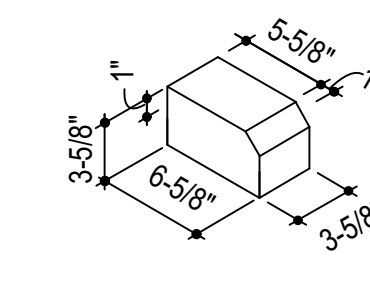
SPECIAL SHAPE NO. 7
[ARCHITECTURAL CMU]
(SILL AT GYMNASIUM)



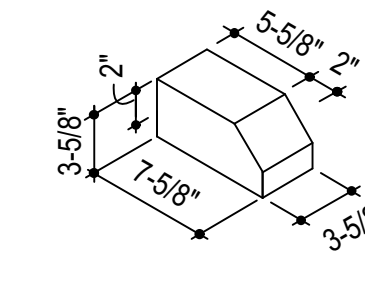
SPECIAL SHAPE NO. 8 [CMU]
(TYP. AT ALL 45° CMU WALL ANGLES)



SPECIAL SHAPE NO. 9
[ARCHITECTURAL CMU 1]
(TYP. AT 1ST FLOOR EXT. STOREFRONT AND CURTAIN WALL SILLS - SEE ARCH. ELEVATIONS AND SECTIONS)

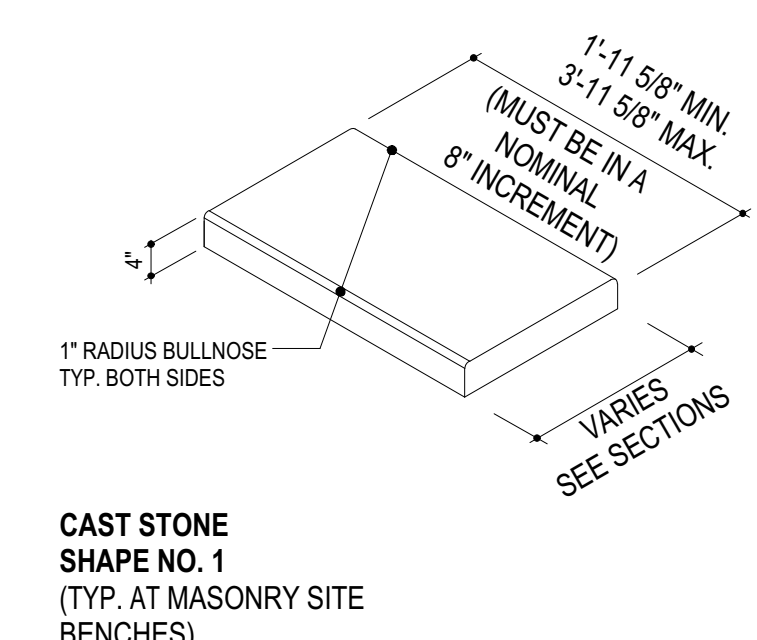


SPECIAL SHAPE NO. 10
[FACE BRICK 'B']
(SEE AUDITORIUM)

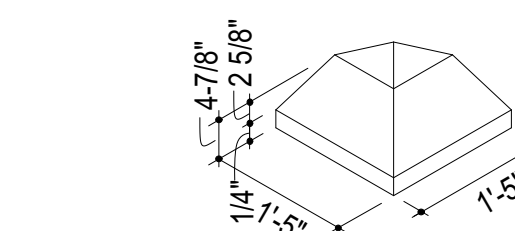


SPECIAL SHAPE NO. 11
[FACE BRICK]
(SEE SITE SIGN)

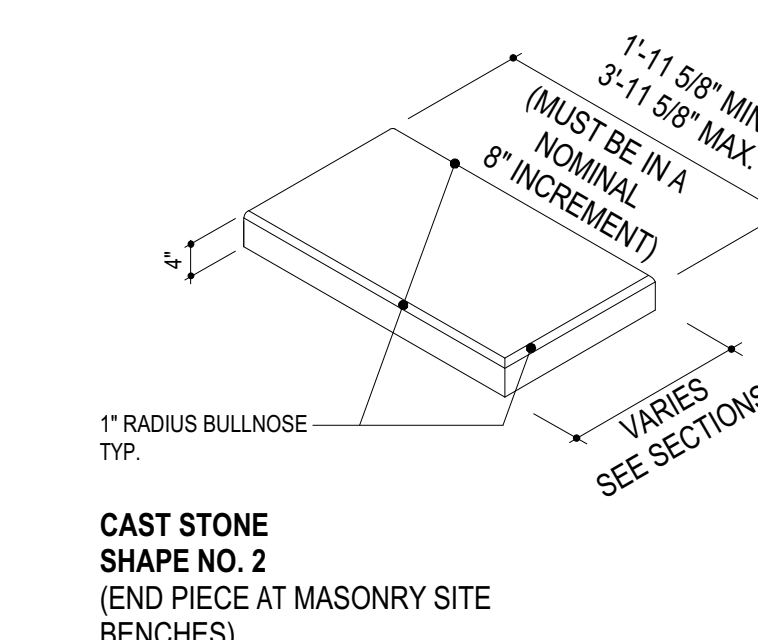
4 SPECIAL SHAPE MASONRY UNITS
A-430 SCALE: 1" = 1'-0"



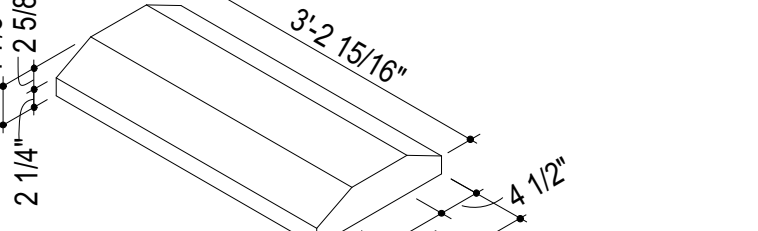
CAST STONE SHAPE NO. 1
(TYP. AT MASONRY SITE BENCHES)



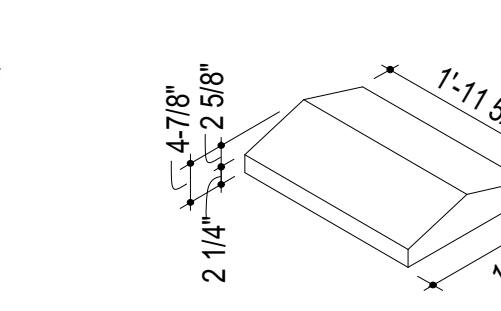
CAST STONE SHAPE NO. 4
FOR USE AT OUTSIDE CORNERS OF SITE WALL CAPS (ADJACENT TO CAST STONE SHAPE NO. 1) SEE WALL SECTION 1/A-530



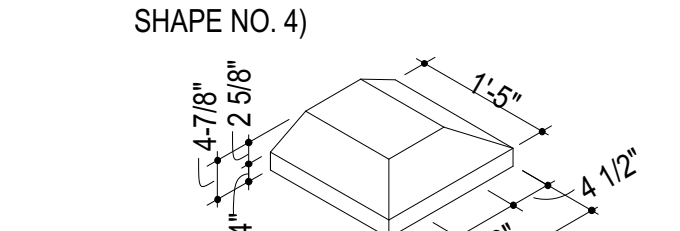
CAST STONE SHAPE NO. 2
(END PIECE AT MASONRY SITE BENCHES)



CAST STONE SHAPE NO. 5
FOR USE AT SITE SIGN SEE DETAILS ON 4/A-530

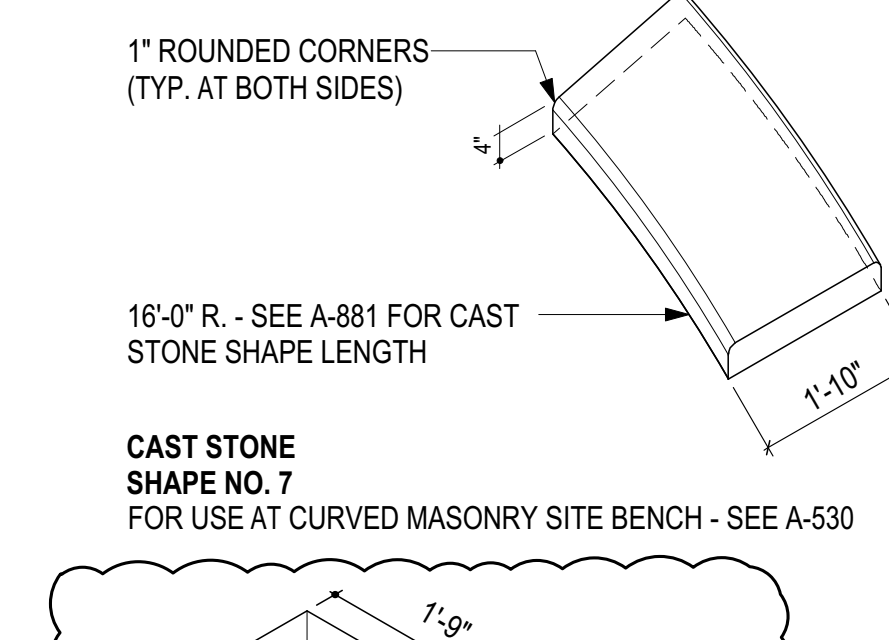


CAST STONE SHAPE NO. 3
(FOR USE AT SITE WALL CAPS SEE WALL SECTION 1/A-530 FOR OUTSIDE CORNERS SEE CAST STONE SHAPE NO. 4)

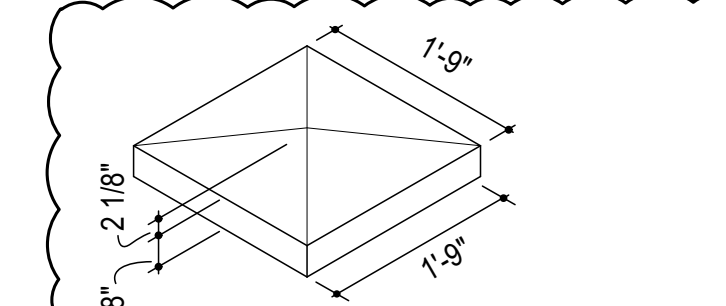


CAST STONE SHAPE NO. 6
FOR USE AT SITE SIGN SEE DETAILS ON 4/A-530

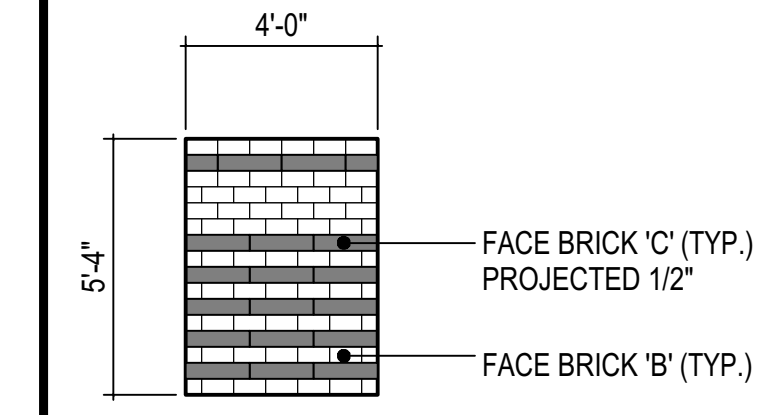
7 CAST STONE SHAPES
A-430 SCALE: 1/2" = 1'-0"



CAST STONE SHAPE NO. 7
FOR USE AT CURVED MASONRY SITE BENCH - SEE A-530

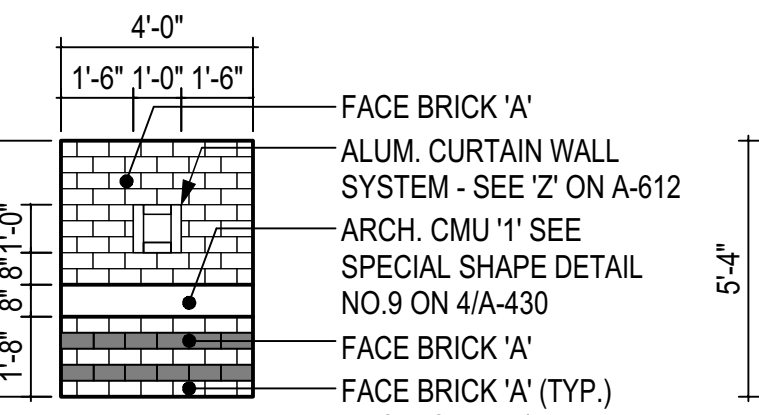


CAST STONE SHAPE NO. 8
FOR USE AT MASONRY SITE PIERS SEE SECTION 7/A-530 (SEE ALTERNATES)



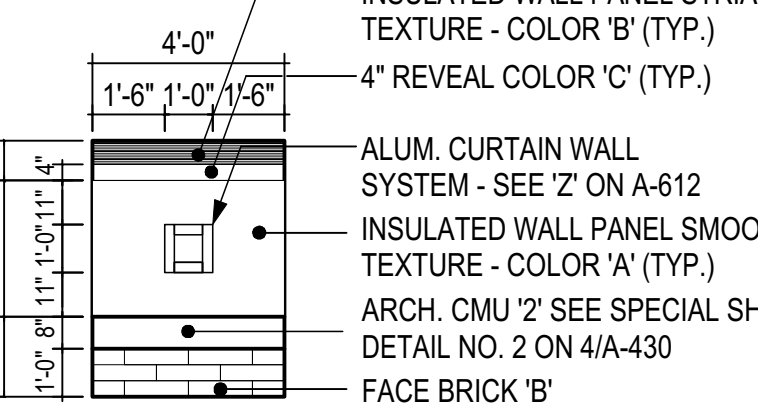
PANEL NO. 1
1'-4" CAVITY WALL CONSTRUCTION - PER WALL SECTIONS INCLUDING FLASHING AND WEEP HOLES

REAR OF PANEL FULL HEIGHT STACKBONDED 8" CMU W/ 'VEE' JOINTS.



PANEL NO. 2
1'-4" CAVITY WALL CONSTRUCTION - PER WALL SECTIONS INCLUDING FLASHING AND WEEP HOLES

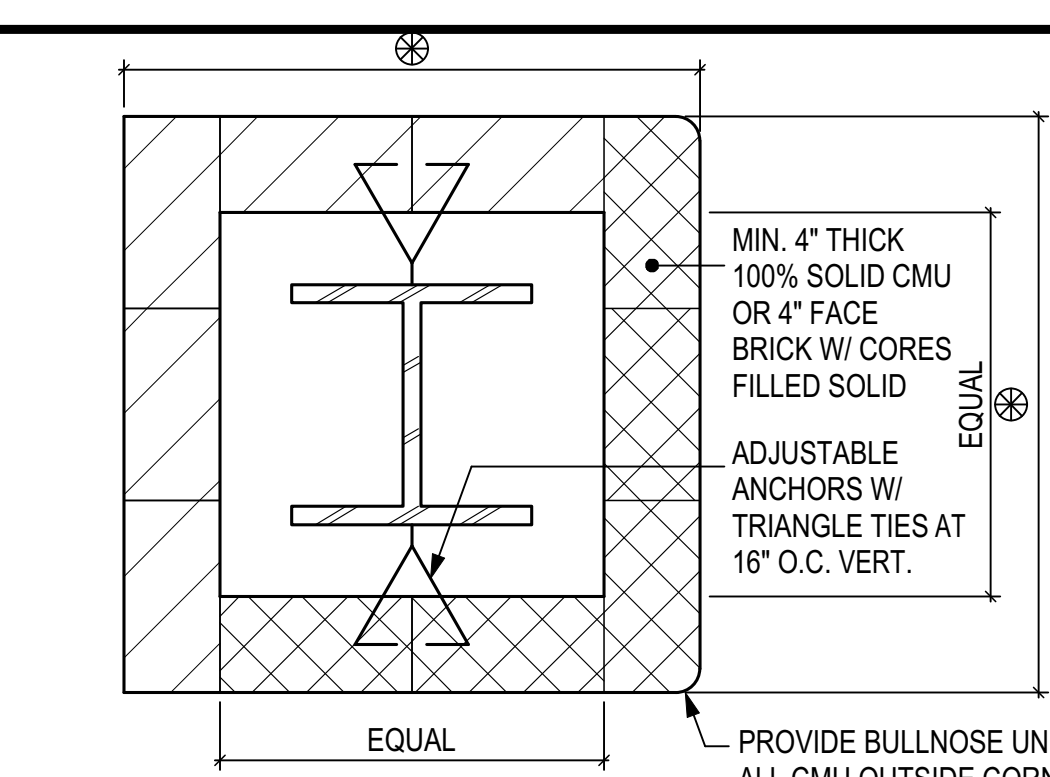
REAR OF PANEL FULL HEIGHT STACKBONDED 8" CMU W/ 'VEE' JOINTS.



PANEL NO. 3
1'-4" CAVITY WALL CONSTRUCTION - PER WALL SECTIONS INCLUDING FLASHING AND WEEP HOLES

REAR OF PANEL FULL HEIGHT STACKBONDED 8" CMU W/ 'VEE' JOINTS.

6 SAMPLE MASONRY PANELS
A-430 SCALE: 1/4" = 1'-0"



- ⊗ (ALL MASONRY ENCLOSURES AROUND COLS. ARE 4" THK. FORMING A 2'-0" x 2'-0" OVERALL OUTSIDE DIM. UNLESS OTHERWISE NOTED OR DIM. ON FLOOR PLAN.)
- ALL STRUCTURAL STEEL COLUMNS INCLUDING EXTERIOR CANOPY COLUMNS SHALL BE 2 HOUR FIRE RATED. REFER TO DETAIL 2/A-003 FOR CONDITION ABOVE.
 - MASONRY ENCLOSURE TO PROVIDE 2 HOUR FIRE RATING IN ACCORDANCE W/ NATIONAL CONCRETE MASONRY ASSOCIATION TEK 7-1 (1995) FOR EQUIVALENT THICKNESS CONCRETE MASONRY UNIT.

9 MASONRY COL. ENCLOSURE DETAIL
A-430 SCALE: 1 1/2" = 1'-0"

Oak Contracting, LLC
High School #13 Addendum No. 7
Attachment A, February 25, 2020

This Attachment A portion of the addendum includes changes and clarifications to the Contract Documents as follows:

Item:

This Cover page	1 page
Revisions to Oak portion of Addenda #4	3 pages

General

1. When acknowledging receipt of addenda on the bid form, Contractors shall use the following dates as noted in the TCA portions.
2. Contractors shall include all additions, deletions, clarifications and RFI responses published in addenda into their respective scopes of work as applicable.

Revisions to Oak Portion of Addenda #4

1. Response to Prebid RFI PB-047 has been revised. Revised RFI Response follows this page.



Request For Information PB-047

High School #13
Mission Road

Project # 1705
Tel: Fax:

RFI #: PB-047

Date Created: 2/7/2020

Answer Company

TCA Architects
1369 General's Hwy
Crownsville, MD 21032

Answered By

Robyn Toth
Phone: 410-266-7722
Fax:

Author Company

Oak Contracting, LLC
1000 Cromwell Bridge Road
Towson, MD 21286

Authored By

Corey Wixsom
Phone: 410-828-1000
Fax:

Co-Respondent

Author RFI Number

Subject

W.G. Tomko

Discipline

Category

Cc: Company Name

Oak Contracting, LLC

Contact Name

File

Copies

1

Notes

Question

Please review attached Pre-bid RFI #PB-047 and provide a response.

Date Required:

Suggestion

Answer

Date Answered: 2/25/2020

1. All spiral round ducts and fittings shall be provided by a listed acceptable manufacturer. Single-wall rectangular, double-wall rectangular and longitudinal round ducts and fitting may be either shop fabricated or factory fabricated by one manufacturers listed for spiral round ducts and fittings.

2. Page 1 of Specification Section 233713 is not missing.

3. The use of single-wall, longitudinal-seam ducts with snap-lock seams is not permitted (233113.2.5.B.1).

Revised RFI Response

Pre-bid RFI #PB-047

From: [Steve Krell](#)
To: [Matt Lurz](#); [Corey Wixsom](#); [Ed Lurz](#)
Subject: FW: Howard County HS #13 RFIs
Date: Friday, February 7, 2020 1:24:22 PM
Attachments: [Matthew Shay.vcf](#)

Thanks,

Steve Krell, CPE



From: Matthew Shay
Sent: Friday, February 7, 2020 1:07 PM
To: Steve Krell <skrell@oakcontracting.com>
Cc: Albert Kish <akish@wgtomko.com>; Lee Pelco <lpelco@wgtomko.com>
Subject: FW: Howard County HS #13 RFIs

Steve,

See below questions for sheet metal.

Thanks,



From: Leslie Lewis <llewis@metrotestbalance.com>
Sent: Friday, February 7, 2020 9:33 AM
To: Matthew Shay <mshay@wgtomko.com>
Subject: Howard County HS #13 RFIs

Matt,

Following are RFIs for the above noted project.

Oak MTB RFI 1-

Spec Section 233113, Part 2-Products- lists several manufacturers of ductwork.

Will MTB shop fabricated duct built per schedule on the drawings be an acceptable alternate to the

listed manufacturers?

TCA MTB RFI 2-

Page 1 of Specification Section 233713 is missing. Please provide.

TCA MTB RFI 3-

Is snaplock pipe acceptable for runouts to diffusers?

Thanks Matt.

Mrs. Leslie Lewis

Metro Test & Balance

Sheet Metal Estimator

Office: (301) 808-3660

Cell: (443) 370-5242

llewis@metrotestbalance.com