

Thomas Viaduct Middle School R&P Classroom Remodel (Non-Wage)
BID # 034.22.B4

Addendum 2
Date: March 22, 2022

Items

1. Attached Pre-Bid Site Visit Sign-In Sheet.
2. Attached Pre-Bid RFI Log with attached drawings.
3. Attached Bid Clarification No.2 from DLR Group with attached drawings.

END OF DOCUMENT

TVMS Pre-Bid RFI Log		
Item No.	Question	Answer
1	Drawing 3A/AD1.0, Door B61 is not the same swing as the existing condition. Hardware Set 1 does not show installing hinge and jamb blanks, a full surface continuous hinge or using a full escheteuon lockset to cover the cylinder hole that will now be on the inside of the door. How do you want to address this issue?	Include the following clarifications to Sheet AD1.0: At 3A/AD1.0, the Keynote #21 will be revised to "Remove Door and Frame for reinstallation at at new Classroom B-61. Door will swing into the classroom. Existing door to be modified with a cut out at the bottom of door for a Lexan panel. See detail 5A/A1.4 Type 1 Door for the Lexan panel size at bottom half of door." 2) At 5C/AC1.0, keynote #20 will be revised to the following, "Door and Frame to remain."
2	Drawing 6D/A1.4, Door schedule, Door B60, Note 5, Door 60 is left hand reverse and door A68 is right hand. The hand is correct swing but can you verify that the cylinder will not be on the inside of the door when the door is at its new location?	Include the following clarifications to Sheet A1.4 detail 6D: Pertaining to Door A72, revise Door Note 1 to "Existing Frame to Remain". Pertaining to Door B60, revise Remarks to Note 6 to "Reinstalled existing door and frame salvaged from Storage B61 door. Cut door for Lexan panel installation per Door Type 1 panel size."
3	Drawing A1.1, Keynotes: 3.1 Note 7, What type of window treatment are we matching? What is the existing?	Existing as seen in attached photo and walk-through. They appear to be aluminum slats. In classroom B60, there are three windows at approximately (4' x 7'-10" verify in field) that will require a window treatment each. In addition, there are two storefront window systems that will need (4) window treatments approximately 3'-4" x 11'-4" (to be verified in field). In classroom B61, there are also three windows at approximately (4' x 7'-10" verify in field) that will require a window treatment each and one (1) window treatment for the storefront that measures approximately 3'-4" x 11'-4" to be verified in field.
4	Drawing A1.1, Keynotes: 3.2 Note 8, What is the existing clock type that we have to match?	A new wall clock will not be needed. Revise Keynote 8 to read, "Reinstall clock removed from rooms A72 and B60."
5	Drawing A1.1, Keynotes: 3.2 Note 14, Can you send a photo or give us a specification of the existing signage we must match?	Provide room signs manufactured and/or supplied by Andco Industries or by Signs and Wonders Inc. 410-442-8243. Room signs shall meet ADA requirements. Mount signs at height to meet ADA. See attached photo of the existing signage includes text and braille.
6	The site visit shows different receptacle colors. What color are we matching?	Black receptacles are typical outlets, grey receptacles are for computer power specifically. Only use grey receptacles where computer power is indicated.
7	Will there be summer school at this facility?	This school is not currently scheduled to host summer school.
8	Who is doing the final cleaning and waxing of the floors?	Contractor is responsible for final cleaning and waxing of new flooring.
9	Do you have the original fire alarm drawings showing the candelas for the existing devices?	See attached existing fire alarm drawings.

TVMS Pre-Bid RFI Log		
Item No.	Question	Answer
10	What is the height to the existing deck in B60, B61 and hallway?	The roof at the existing R/P Activity Room is a hip roof. The bottom of the chord at the hallway per the existing drawings is at 21'-6".
11	Please provide a specification for the Visual Display Boards as there do not appear to be any specifications regarding this in the project documents	Tack Boards and Marker Boards and Projection Boards. Color shall be natural Tan for Tack Boards. Provide box type chalk trays, flat trays are not acceptable. Manufacturer for Tack Boards and Marker Boards: Claridge, ARCO Products Inc., Marsh.
12	Please clarify if the general contractor is to list out all subcontractors to be utilized on the bid form as there are only three (3) lines on the bid form to list the proposed subcontractors.	GC shall list all sub-contractors, provide separate document as needed.
13	Do to the size and nature of this project, will the GC be required to provide a field office trailer or will an adjacent room be available for use as a meeting area?	The school has approved the contractor to use a classroom of the school over the summer for storage of the furniture, and for on-site meetings in lieu of a trailer. The school has offered classroom B03, the home economics classroom north of the two new classrooms being created. Contractor needs to take photographic evidence of existing conditions, and the space must be cleaned, and any repair required, at the end of the summer for the school to use.
14	Who is responsible for clearing out the classrooms of desks, chairs, misc items, etc. before construction starts?	GC is responsible for removal, storage, and relocation of furniture and equipment. Personal materials shall be packed by the school. GC to provide a written and visual inventory prior to moving any furniture or equipment.
15	The spec for Thomas Viaduct mentions wood veneer casework however, it seems mostly plastic laminate manufacturers are listed. Is the casework intended to be p-lam or wood veneer?	The casework is intended to be p-lam.
16	Will substitute products for casework be accepted if they match the design intent and are comparable products? We have heard that Stevens does not have capacity for this summer. We do have availability with Campbell Rhea if you will accept a substitution.	For any substitution request, complete technical data, specifications, and description of substitutions must be accompanied with the substitution request. The contractor must certify that the proposed substitution has been fully investigated and determined to be equal or superior in all respects to the specified product.

Existing Window Treatment



ELECTRICAL SYMBOLS AND ABBREVIATIONS

GENERAL	POWER	FIRE ALARM SYSTEM (CONT)	ABBREVIATIONS																											
<p>① DENOTES REFERENCE TO SPECIFIC NOTE ON DRAWING.</p> <p>100- DETAIL NUMBER</p> <p>100- DRAWING NUMBER WHERE DETAIL IS LOCATED.</p> <p>#/E## DETAIL REFERENCE: DETAIL NUMBER/DRAWING NUMBER</p> <p>△ WIRE DESIGNATION, SEE SCHEDULE ON DRAWING E5.3</p>	<p>— UGE — NEW UNDERGROUND PRIMARY ELECTRIC SERVICE DUCTBANK.</p> <p>— UGT — NEW UNDERGROUND TELEPHONE AND CATV SERVICE DUCTBANK.</p> <p>— UGL — NEW UNDERGROUND BURIED LIGHT SERVICE. DIRECT BURIED PVC CONDUIT, SEE DETAIL 5/E0.3.</p> <p>— EM — EMERGENCY WIRING.</p> <p>— — — — — LOW VOLTAGE CONTROL WIRING.</p>	<p>☉ SMOKE DETECTOR, CEILING MOUNTED.</p> <p>☉ DUCT TYPE SMOKE DETECTOR WITH REMOTE TEST AND INDICATING STATION. (REMOTE TEST AND INDICATING STATION SHALL BE MOUNTED NEAR DUCT TYPE SMOKE DETECTOR IN ACCESSIBLE LOCATION.)</p> <p>☉ THERMAL HEAT DETECTOR, CEILING MOUNTED.</p> <p>☉ SMOKE DOOR MAGNETIC HOLDER.—SUPPLIED BY DOOR HARDWARE SUPPLIER.</p> <p>☉ SPRINKLER SYSTEM FLOW SWITCH WITH FIRE ALARM SYSTEM MONITORING MODULE.</p> <p>☉ SPRINKLER SYSTEM VALVE MONITOR SWITCH WITH FIRE ALARM SYSTEM MONITORING MODULE.</p> <p>☉ SMOKE DAMPER RELAY AND SMOKE DAMPER. SEE DETAIL 12/E5.4.</p> <p>☉ FIRE SMOKE DAMPER SMOKE DETECTOR (PROVIDED BY DIVISION 15). PROVIDE FIRE ALARM SYSTEM MONITORING MODULE AT FIRE/SMOKE DAMPER SMOKE DETECTOR. REFER TO DIAGRAM 12/E5.4 FOR CONNECTIONS AND ADDITIONAL INFORMATION.</p> <p>☉ DUCT TYPE SMOKE DETECTOR WITH AUXILIARY CONTACTS CONTROLLING NEARBY SMOKE DAMPER RELAY. PROVIDE WITH CONCEALED DETECTOR INDICATING AND TEST STATION IN ACCESSIBLE LOCATION. SEE DETAIL 12/E5.4.</p> <p>☉ FIRE ALARM HORN, DIRECTIONAL AS INDICATED, WALL MOUNTED 7'-6" AF.</p> <p>☉ SMOKE DETECTOR WITH AUXILIARY CONTACTS CONTROLLING NEAR BY SMOKE DAMPER RELAY. REFER TO DETAIL 12/E5.4.</p>	<p>A, AMP AMPERE</p> <p>AF, AFF ABOVE FINISHED FLOOR</p> <p>AFG ABOVE FINISHED GRADE</p> <p>AHU AIR HANDLING UNIT</p> <p>AIC AMPERE INTERRUPTING CAPACITY</p> <p>ATC AUTOMATIC TEMPERATURE CONTROL</p> <p>ATS AUTOMATIC TRANSFER SWITCH</p> <p>A/V AUDIO/VISUAL</p> <p>AWG AMERICAN WIRE GAUGE</p> <p>BC BELOW CEILING</p> <p>C CONDUIT</p> <p>CATV CABLE TELEVISION</p> <p>CB CIRCUIT BREAKER</p> <p>CCTV CLOSED CIRCUIT TELEVISION</p> <p>CFI COMPACT FLUORESCENT CIRCUIT</p> <p>CLG CEILING</p> <p>CT CURRENT TRANSFORMER</p> <p>CUH CABINET UNIT HEATER</p> <p>CX CONNECT TO EXISTING</p> <p>DISC DISCONNECT</p> <p>DN DOWN</p> <p>DUC DEMOLITION UNDERGROUND COMMUNICATION CABLE</p> <p>DUE DEMOLITION UNDERGROUND ELECTRIC</p> <p>DUT DEMOLITION UNDERGROUND TELEPHONE</p> <p>DWG DRAWING</p> <p>DX DISCONNECT EXISTING</p> <p>EC EMPTY CONDUIT</p> <p>ECB ENCLOSED CIRCUIT BREAKER</p> <p>EFO EXHAUST FAN</p> <p>EFP EMERGENCY POWER OFF</p> <p>ETR EXISTING TO REMAIN</p> <p>EUE EXISTING UNDERGROUND ELECTRIC</p> <p>EUH ELECTRIC UNIT HEATER</p> <p>EUE EXISTING UNDERGROUND TELEPHONE</p> <p>EX EXISTING</p> <p>EXH EXHAUST</p> <p>EXIST EXISTING</p> <p>EXP EXPROOF</p> <p>EXT EXTERIOR</p> <p>EWC ELECTRIC WATER COOLER</p> <p>FA FIRE ALARM</p> <p>FAAP FIRE ALARM ANNUNCIATOR PANEL</p> <p>FABP FIRE ALARM BOOSTER PANEL</p> <p>FACP FIRE ALARM CONTROL PANEL</p> <p>FCU FAN COIL UNIT</p> <p>FLA FULL LOAD AMPERES</p> <p>FSS FUSED SAFETY SWITCH</p> <p>G, GND GROUND</p> <p>INT INTERRUPTER</p> <p>HID HIGH INTENSITY DISCHARGE</p> <p>HOA HAND-OFF-AUTOMATIC</p> <p>HP HORSEPOWER</p> <p>HTG HEATING</p> <p>HW HOT WATER</p> <p>IBGB INTERSYSTEM BONDING TERMINATION BUSBAR</p> <p>IDF INFORMATION DATA FRAME</p> <p>IT INFORMATION TECHNOLOGY</p> <p>JUNCTION BOX</p> <p>KMIL KILOVOLT-AMPERES</p> <p>KVA KILOWATT</p> <p>LRA LOCKED ROTOR AMPERES</p> <p>LIT LIGHTING</p> <p>MAX MAXIMUM</p> <p>MCA MINIMUM CIRCUIT AMPACITY</p> <p>MCB MAIN CIRCUIT BREAKER</p> <p>MCC MOTOR CONTROL CENTER</p> <p>MCP MOTOR CIRCUIT PROTECTOR</p> <p>MDP MAIN DISTRIBUTION PANEL</p> <p>MFS MAXIMUM FUSE SIZE</p> <p>MH MOUNTING HEIGHT/MANHOLE</p> <p>MIN MINIMUM</p> <p>MLO MAIN LUGS ONLY</p> <p>MOCP MAXIMUM OVERCURRENT CURRENT PROTECTION</p> <p>MPOP MAIN POINT OF PRESENCE MOUNTED</p> <p>MTD NORMALLY CLOSED</p> <p>NEC NATIONAL ELECTRICAL CODE</p> <p>NEMA NATIONAL ELECTRICAL MANUFACTURER'S ASSOCIATION</p> <p>NFSS NONFUSED SAFETY SWITCH</p> <p>NIC NOT IN CONTRACT</p> <p>NO NORMALLY OPEN/NUMBER NOT TO SCALE</p> <p>NTS ON CENTER</p> <p>OC POLE, POLES OR PUMP</p> <p>P PUSH BUTTON</p> <p>PB PANEL</p> <p>PSI POUNDS PER SQUARE INCH</p> <p>PT POTENTIAL TRANSFORMER</p> <p>PUP PROPELLED UNIT HEATER</p> <p>PVC POLYVINYL CHLORIDE</p> <p>RCPPT RECEPTACLE</p> <p>REC RECEPTACLE</p> <p>RGS RIGID GALVANIZED STEEL RELOCATED</p> <p>RL ROOM</p> <p>RM REMOVE AND RELOCATE</p> <p>RR REMOVE EXISTING</p> <p>SR SURFACE METAL RACEWAY</p> <p>SWB SWITCH BOARD</p> <p>TGB TELECOM GROUNDING BUSBAR</p> <p>TMGB TELECOM MAIN GROUNDING BUSBAR</p> <p>TIB TELEPHONE TERMINAL BOARD</p> <p>TTC TELEPHONE TERMINAL CABINET</p> <p>TVC TRANSIENT VOLTAGE SURGE SUPPRESSOR</p> <p>TYP TYPICAL</p> <p>UG UNDERGROUND</p> <p>UN UNLESS OTHERWISE NOTED</p> <p>UV UNIT VENTILATOR</p> <p>V VOLT, VOLTS</p> <p>VAV VARIABLE AIR VOLUME</p> <p>W WATTS/WIRE</p> <p>W WATTS/WIRE</p> <p>WP WEATHERPROOF</p> <p>XFMR TRANSFORMER</p>																											
<p>□ CEILING OUTLET AND FLUORESCENT LIGHTING FIXTURE, TYPE AS DESIGNATED.</p> <p>□ WALL OUTLET AND FLUORESCENT LIGHTING FIXTURE, TYPE AS DESIGNATED.</p> <p>□ CEILING OUTLET WITH 2' x 4' FLUORESCENT LIGHTING FIXTURE, TYPE AS DESIGNATED.</p> <p>□ CEILING OUTLET AND FLUORESCENT LIGHTING FIXTURE, TYPE AS DESIGNATED.</p> <p>○ CEILING OUTLET AND LIGHTING FIXTURE, TYPE AS DESIGNATED.</p> <p>○ WALL OUTLET AND LIGHTING FIXTURE, TYPE AS DESIGNATED.</p> <p>○ LIGHTING FIXTURE ON GENERATOR CIRCUIT.</p> <p>○ LIGHTING TRACK, SURFACE MOUNTED, TYPE AS DESIGNATED WITH TYPE AND NUMBER OF HEADS AS DESIGNATED.</p> <p>○ EXTERIOR LIGHT STANDARD, POLE MOUNTED (DOUBLE UNIT), TYPE AS DESIGNATED. NUMBER INDICATES CIRCUIT.</p> <p>○ EXTERIOR LIGHT STANDARD, POLE MOUNTED (SINGLE UNIT), TYPE AS DESIGNATED. NUMBER INDICATES CIRCUIT.</p> <p>○ EXTERIOR IN GROUND SIGN LIGHT, TYPE AS DESIGNATED.</p> <p>○ WALL MOUNTED BATTERY POWERED LIGHTING UNIT, TYPE AS DESIGNATED.</p> <p>○ CEILING MOUNTED EXIT SIGN WITH OR WITHOUT DIRECTIONAL ARROWS AS INDICATED. SHADED AREA INDICATES STENCIL FACE. CIRCUIT TO EXIT SIGN SHALL BE UNSWITCHED.</p> <p>○ WALL MOUNTED EXIT LIGHT, MOUNT 7'-6" AFF, UON, WITH OR WITHOUT DIRECTIONAL ARROWS AS INDICATED. SHADED AREA INDICATES STENCIL FACE. CIRCUIT TO EXIT SIGN SHALL BE UNSWITCHED.</p> <p>S SINGLE-POLE TOGGLE SWITCH, MOUNTED 48" AFF, UON.</p> <p>S₃ THREE-WAY TOGGLE SWITCH, MOUNTED 48" AFF, UON.</p> <p>S₄ FOUR-WAY TOGGLE SWITCH, MOUNTED 48" ABOVE FINISHED FLOOR, UON.</p> <p>S DIMMER SWITCH, SINGLE-POLE, UON, MOUNTED 48" ABOVE FINISHED FLOOR, UON.</p> <p>S SINGLE-POLE PILOT LIGHT SWITCH WITH LIT TOGGLE, MOUNTED 48" ABOVE FINISHED FLOOR, UON.</p> <p>S SINGLE-POLE TOGGLE KEY SWITCH, MOUNTED 48" AFF, UON.</p> <p>S LOW VOLTAGE TOGGLE SWITCH, 3-POSITION, SINGLE-POLE, DOUBLE THROW, MOMENTARY CONTACT, MOUNT AT 48" ABOVE FLOOR UON.</p> <p>S₃ TUBULAR SKYLIGHT DIFFUSER CONTROL SWITCH, MOUNTED 48" AFF UON.</p> <p>▽ WALL STATION, DUAL-TECHNOLOGY OCCUPANCY SENSOR WITH MANUAL PUSHBUTTON "OFF" OVERRIDE.</p> <p>▽ 3-WAY WALL STATION, DUAL-TECHNOLOGY OCCUPANCY SENSOR WITH MANUAL PUSHBUTTON "OFF" OVERRIDE.</p> <p>S₀ LOW VOLTAGE CONTROL STATION, TYPE 1. SEE DIAGRAM 10/E5.4 FOR ADDITIONAL INFORMATION.</p> <p>S₀ LOW VOLTAGE CONTROL STATION, TYPE 2. SEE DIAGRAM 10/E5.4 FOR ADDITIONAL INFORMATION.</p> <p>S₁ LOW VOLTAGE SWITCH, 2-BUTTON TYPE. SEE DIAGRAM 11/E5.4 FOR ADDITIONAL INFORMATION.</p> <p>S₂ LOW VOLTAGE SWITCH, 3-BUTTON TYPE. SEE DIAGRAM 11/E5.4 FOR ADDITIONAL INFORMATION.</p> <p>S₁ TIMER SWITCH HORSEPOWER RATED, 2 HOUR TIME CYCLE, FLUSH MOUNTED 48" AFF. PROVIDE NAMEPLATE INDICATING DEVICE CONTROLLED. EXACT WORDING SHALL BE APPROVED BY OWNER. EQUAL TO YORK MODEL #A502H.</p> <p>○ LIGHTING CONTROL SYSTEM DUAL-TECHNOLOGY OCCUPANCY SENSOR, 360 DEGREE, CEILING MOUNTED.</p> <p>○ LIGHTING CONTROL SYSTEM ULTRASONIC HALLWAY-STYLE OCCUPANCY SENSOR, 360 DEGREE WITH EXTENDED RANGE ALONE ONE AXIS (MARK WITH ARROWS), CEILING MOUNTED. SUBSCRIPT DENOTES POWER PACK SERVING SENSOR.</p> <p>○ LIGHTING CONTROL SYSTEM DUAL-TECHNOLOGY OCCUPANCY SENSOR, 180 DEGREE, ADJUSTABLE STEM, WALL MOUNTED 12 INCHES BELOW CEILING LEVEL.</p> <p>○ LIGHTING CONTACTOR (SHOWN ON POWER PLANS). SUBSCRIPT INDICATES CONTACTOR DESIGNATION.</p> <p>○ LIGHTING CONTROL SYSTEM POWER PACK. REFER TO DETAIL 11/E5.4 FOR ADDITIONAL INFORMATION. SUBSCRIPT DENOTES POWER PACK ZONE.</p> <p>□ ADDRESSABLE BALLAST CONTROLLER. REFER TO DETAILS 7/E5.4, 8/E5.4 AND 9/E5.4 FOR ADDITIONAL INFORMATION.</p> <p>□ EMERGENCY LIGHTING INTERFACE. REFER TO RISER ON DRAWING E5.5.</p> <p>○ PHOTOELECTRIC RELAY/PHOTOCELL CONTROL, WALL MOUNTED.</p> <p>○ PHOTOELECTRIC RELAY/PHOTOCELL CONTROL, WALL MOUNTED. PROVIDE SENSOR EQUAL TO HUBBELL PHOTOCELL SENSOR DLCP1.</p> <p>○ PHOTOELECTRIC RELAY/PHOTOCELL SWITCH, ON/OFF, CEILING MOUNTED.</p> <p>○ DAYLIGHT HARVESTING SYSTEM SENSOR, 360 DEGREE, CEILING MOUNTED.</p>	<p>□ ELECTRIC PANELBOARD (277/480V), SURFACE OR RECESSED MOUNTED AS INDICATED</p> <p>□ ELECTRIC PANELBOARD (120/208V), SURFACE OR RECESSED MOUNTED AS INDICATED</p> <p>□ DUPLEX GROUNDING TYPE RECEPTACLE ON EMERGENCY POWER CIRCUIT.</p> <p>□ TRANSIENT VOLTAGE SURGE SUPPRESSOR IN NEMA TYPE 1 ENCLOSURE, UON.</p> <p>□ 4' W x 8' H x 3/4" THICK PLYWOOD MOUNTING BOARD, UON.</p> <p>□ TRANSFORMER.</p> <p>□ ENCLOSED CIRCUIT BREAKER IN NEMA TYPE 1 ENCLOSURE, UON. MOUNT 5'-6" AFF TO TOP OF ENCLOSURE, UON. SIZE AS NOTED. PROVIDE SHUNT TRIP CIRCUIT BREAKER WHERE INDICATED.</p> <p>□ SAFETY DISCONNECT SWITCH IN NEMA TYPE 1 ENCLOSURE, UON. MOUNT 5'-6" AFF TO TOP OF ENCLOSURE, UON. RATING AND FUSING AS NOTED.</p> <p>□ MAGNETIC MOTOR STARTER, SIZED FOR MOTOR HORSEPOWER INDICATED, IN NEMA TYPE 1 ENCLOSURE, UON. MOUNT 5'-6" AFF TO TOP OF ENCLOSURE, UON. STARTER SIZE AS NOTED ON PLANS.</p> <p>□ COMBINATION TYPE MOTOR STARTER, WITH STARTER AND DISCONNECT, HOA SWITCH, "PUSH-TO-TEST" RED "STOPPED" AND GREEN "RUNNING" INDICATING PILOT LIGHTS, AND TWO SETS OF N.O. AND N.C. AUXILIARY CONTACTS IN NEMA TYPE 1 ENCLOSURE, UON. MOUNT 5'-6" AFF TO TOP OF ENCLOSURE, UON. STARTER SIZE AND DISCONNECT SIZE AS NOTED ON PLANS.</p> <p>S₀ MANUAL MOTOR STARTER/THERMAL OVERLOAD SWITCH, WITH OVERLOAD PROTECTION, IN NEMA TYPE 1 ENCLOSURE, UON. MOUNT ADJACENT TO EQUIPMENT BEING SERVED, UON. P DENOTES PILOT LIGHT.</p> <p>T TELECOMMUNICATIONS/EQUIPMENT GROUND BAR. SEE DETAIL 4/E5.2.</p> <p>○ ELECTRIC MOTOR CONNECTION.</p> <p>○ HARD WIRED ELECTRICAL CONNECTION, CONNECT TO EQUIPMENT AS NOTED.</p> <p>○ JUNCTION BOX, WITH BLANK COVER PLATE, CEILING MOUNTED.</p> <p>○ SINGLE-GANG OUTLET BOX, WITH BLANK COVER PLATE, RECESSED WALL MOUNTED, UON.</p> <p>○ "EMERGENCY POWER OFF" PUSHBUTTON WITH PROTECTIVE GUARD. MOUNT 48" AFF.</p> <p>○ DUPLEX GROUNDING TYPE CONVENIENCE RECEPTACLE (NEMA 5-20R), RECESSED MOUNTED 18" AFF, UON. C DENOTES COMPUTER POWER</p> <p>○ DOUBLE DUPLEX (QUAD) GROUNDING TYPE RECEPTACLE (NEMA 5-20R), RECESSED MOUNTED 18" AFF, UON. C DENOTES COMPUTER POWER.</p> <p>○ DUPLEX GROUNDING TYPE CONVENIENCE RECEPTACLE (NEMA 5-20R), RECESSED MOUNTED 8" ABOVE COUNTER, WHERE THERE IS NO COUNTER, MOUNT 48" AFF, UON. C DENOTES COMPUTER POWER.</p> <p>○ DUPLEX GROUNDING TYPE CONVENIENCE RECEPTACLE (NEMA 5-20R), RECESSED MOUNTED 84" AFF.</p> <p>○ DUPLEX GROUNDING TYPE, GROUND FAULT INTERRUPTER (GFI) TYPE, CONVENIENCE RECEPTACLE (NEMA 5-20R), RECESSED MOUNTED 18" AFF, UON.</p> <p>○ DUPLEX GROUNDING TYPE, GROUND FAULT INTERRUPTER (GFI) TYPE, CONVENIENCE RECEPTACLE (NEMA 5-20R), RECESSED MOUNTED 8" ABOVE COUNTER, WHERE THERE IS NO COUNTER, MOUNT 48" AFF, UON.</p> <p>○ SPECIAL PURPOSE, GROUND TYPE RECEPTACLE OUTLET, RECESSED MOUNTED 18" AFF, UON. REFER TO DRAWINGS FOR SPECIFIC RATINGS INFORMATION AND NEMA CONFIGURATION.</p> <p>○ SIMPLEX GROUNDING TYPE CONVENIENCE RECEPTACLE (NEMA 5-20R), RECESSED MOUNTED 18" AFF, UON. "L" DENOTES TWIST LOCK TYPE, NEMA L5-20R, UON.</p> <p>○ DUPLEX GROUNDING RECEPTACLE (NEMA 5-20R) MOUNTED IN THE SPACE OF CASEWORK.</p> <p>○ DUPLEX GROUNDING TYPE CONVENIENCE RECEPTACLE ON EMERGENCY CIRCUIT 18" AFF, UNLESS OTHERWISE NOTED.</p> <p>○ DOUBLE DUPLEX (QUAD) GROUNDING TYPE RECEPTACLE (NEMA 5-20R) RECESSED MOUNTED 66" AFF. C DENOTES COMPUTER POWER.</p> <p>○ FLOOR BOX FOR DUPLEX RECEPTACLES AND COMMUNICATIONS, RECESSED IN FLOOR. COORDINATE WITH ARCHITECTURAL DRAWINGS FOR EXACT LOCATIONS. REFER TO DETAIL 5/E5.4 FOR ADDITIONAL INFORMATION. D/V INDICATES REQUIRED TELECOMMUNICATIONS JACKS. SEE DETAILS ON E5.3.</p> <p>○ 120 VOLT DROP CORD, SEE DETAIL 6/E5.4.</p> <p>○ TAMPER-RESISTANT TYPE DUPLEX GROUNDING TYPE RECEPTACLE, MOUNTED 18" AFF UON.</p> <p>○ WIREMOLD 4000 SERIES, UNLESS OTHERWISE NOTED, WITH MOUNTING ACCESSORIES AND WIRING DEVICES AS INDICATED. MOUNT 48" ABOVE FLOOR UNLESS OTHERWISE NOTED.</p> <p>○ FLUSH OUTLET WITH 20A, 120V DUPLEX GROUNDING TYPE RECEPTACLE, UON.</p> <p>○ SURFACE MOUNTED MULTI-OUTLET STRIP. LENGTH AND NUMBER OF OUTLETS AS NOTED ON PLANS.</p> <p>○ DUPLEX GROUNDING TYPE (NEMA 5-20R) RECESSED MOUNTED IN APRON OF CASEWORK. RUN BRANCH CIRCUIT WIRING IN PIPE CHASE IN CASEWORK.</p> <p>○ DUPLEX GROUNDING TYPE CONVENIENCE RECEPTACLE MOUNTED ON CONDUIT STUB. SEE DETAIL 2/E4.3.</p>	<p>TELECOMMUNICATIONS SYSTEM</p> <p>▽ DATA OUTLET FOR WIRELESS ACCESS POINT (WAP), FLUSH IN CEILING, UON. PROVIDE RJ45 MODULAR DATA JACK, COVER PLATE AND CATEGORY 6 DATA CABLE FROM DATA OUTLET BACK TO NEAREST MDF/IDF DATA RACK. MAKE ALL CONNECTIONS.</p> <p>▽ BASIC DATA DROP, SEE DETAILS FOR CONFIGURATION. MOUNT 18" AF UON. SEE DETAILS ON DWG E5.3.</p> <p>▽ WARDROBE DROP, SEE DETAILS FOR CONFIGURATION. MOUNT +66" AF UON. SEE DETAILS ON DWG E5.3.</p> <p>▽ CATV SYSTEM DROP TAP, ABOVE CEILING.</p> <p>▽ VIDEO DROP, SEE DETAILS ON DRAWING E5.3 FOR CONFIGURATION. MOUNT 18" AF UON.</p> <p>▽ ADMINISTRATION OR TEACHER DATA DROP, SEE DETAILS ON DRAWING E5.3 FOR CONFIGURATION. MOUNT 18" AF UON.</p> <p>▽ HIGH OUTLETS AND PLATE FOR WALL MOUNTED PROJECTOR/INTERACTIVE WHITEBOARD, MOUNT 90" AF TO BOTTOM OF FACEPLATE SEE DETAILS ON DRAWING E5.3.</p> <p>▽ LOW OUTLETS FOR CEILING MOUNTED LCD PROJECTOR, SEE DETAILS ON DRAWING E5.3. MOUNT 18" AF UON.</p> <p>▽ HIGH OUTLET AND PLATE FOR CEILING MOUNTED LCD PROJECTOR.</p> <p>▽ FLUSH FLOOR OUTLET WITH OUTLETS AS NOTED.</p>	<p>PANELBOARD DESIGNATION</p> <p>E1 LR 1 A</p> <p>QUANTITY DESIGNATION</p> <p>A } MULTIPLE PANELS IN SAME AREA, NUMBERED IN SEQUENCE.</p> <p>B } C } D } E } F }</p> <p>FLOOR DESIGNATION (IF PROVIDED)</p> <p>1 FIRST FLOOR 2 SECOND FLOOR</p> <p>TYPE DESIGNATION</p> <p>L LIGHTING, 277/480V R RECEPTACLES, 120/208V D DISTRIBUTION, 277/480V OR 120/208V M MECHANICAL EQUIPMENT, 277/480V CR COMPUTER RECEPTACLE, 120/208V</p> <p>EMERGENCY DESIGNATION</p> <p>E1 LIGHTING SAFETY E2 STANDBY EQUIPMENT E3 STANDBY EMERGENCY HEAT</p>																											
<p>WIRING</p> <p>○ HOMERUN TO PANELBOARD. NUMBER OF ARROWS HEADS INDICATES NUMBER OF CIRCUITS. NUMBER OF HASH MARKS INDICATES NUMBER OF CONDUCTORS. WHERE NO HASH MARKS APPEAR, PROVIDE TWO (2) CONDUCTORS PLUS GROUND. REFER TO PANEL SCHEDULES FOR CONDUCTOR SIZES.</p> <p>○ CONDUIT AND WIRING RUN CONCEALED IN CEILING SPACE ABOVE CEILINGS, CONCEALED IN WALL SPACE BEHIND NEW WALLS, EXPOSED IN OPEN CEILINGS WHERE NO CEILING SPACE ABOVE CEILINGS EXISTS, AND SURFACE MOUNTED ON EXISTING WALLS IN UNFINISHED SPACES, UON.</p> <p>○ CONDUIT AND WIRING RUN BELOW FLOOR SLAB OR RUN BELOW ROOF WHERE SHOWN ON ROOF PLANS</p> <p>○ CONDUIT TURNING DOWN.</p> <p>○ CONDUIT TURNING UP.</p> <p>○ CONDUIT STUB TERMINATE WITH INSULATED BUSHING ON END.</p>	<p>□ FIRE ALARM SYSTEM</p> <p>□ MANUAL PULL STATION, MOUNTED 48" AFF.</p> <p>○ COMBINATION HORN WITH FLASHING INDICATING STROBE LIGHT, RECESSED WALL MOUNTED 6'-10" AFF OR 6' BELOW CEILING, WHICHEVER IS LOWER. NUMBER REPRESENTS CANDELA RATING. WHERE NO CANDELA RATING INDICATED, PROVIDE 15 CANDELA STROBE LIGHT.</p> <p>○ FLASHING INDICATING STROBE LIGHT, RECESSED WALL MOUNTED 6'-10" AFF OR 6' BELOW CEILING, WHICHEVER IS LOWER. NUMBER REPRESENTS CANDELA RATING. WHERE NO CANDELA RATING INDICATED, PROVIDE 15 CANDELA STROBE LIGHT.</p>	<p>INTERCOMMUNICATIONS/PUBLIC ADDRESS AND SOUND SYSTEM</p> <p>○ SPEAKER, RECESSED CEILING MOUNTED.</p> <p>○ SPEAKER, WALL MOUNTED 7'-6" AFF, UON.</p> <p>○ TRUMPET OR HORN SPEAKER, SURFACE WALL MOUNTED 10'-0" AFF, UON.</p> <p>○ TELEPHONE OUTLET, WALL MOUNTED 48" AFF, UON. PROVIDE WITH STAINLESS STEEL COVER PLATE. LEAVE SLACK CABLE FOR CONNECTION TO FUTURE TELEPHONE.</p> <p>○ VOLUME CONTROL SWITCH, MOUNTED IN SINGLE-GANG OUTLET BOX, 48" AFF, UON.</p> <p>○ MICROPHONE OUTLET.</p> <p>○ LOCAL SOUND SYSTEM SPEAKER WALL MOUNTED 7'-6" AFF, UNLESS OTHERWISE NOTED.</p> <p>○ LOCAL SOUND SYSTEM JACK, MOUNTED 18" AFF.</p> <p>○ HORN SPEAKER, WALL MOUNTED.</p> <p>○ WEATHER-PROOF HORN SPEAKER, WALL MOUNTED.</p> <p>○ CLASSROOM AUXILIARY SOUND SYSTEM SPEAKER.</p> <p>○ SURFACE MOUNTED MICROPHONE OUTPUT STATION, MOUNTED 18" AFF. SUBSCRIPT INDICATES QUANTITY OF INPUT PORTS.</p> <p>○ WIRELESS MICROPHONE RECEIVING STATION MOUNTED AS ON FLOOR PLAN.</p> <p>○ SURFACE MOUNTED AUXILIARY INPUT STATION, MOUNTED 18" AFF. SINGLE INPUT.</p> <p>○ RECESSED MOUNTED CLOCK OUTLET AND SECONDARY CLOCK, MOUNT ABOVE CLASSROOM DOOR OTHERWISE MOUNT 7'-6" AFF UNLESS OTHERWISE NOTED.</p> <p>○ CORRIDOR SECONDARY CLOCK—WALL MOUNTED, DUAL-FACE DIGITAL, MOUNT 7'-6" AFF UNLESS OTHERWISE NOTED.</p> <p>○ WALL MOUNTED LOCAL SOUND SYSTEM SPEAKER, MOUNT 9'-0" AFF UNLESS OTHERWISE NOTED. CONNECT LOCAL SOUND SYSTEM JACK.</p> <p>○ BELL, WALL MOUNTED 7'-6" AFF, UNLESS OTHERWISE NOTED, TYPE AS NOTED.</p> <p>○ INTERCOM SYSTEM CALL SWITCH, WALL MOUNTED 46" AFF UON.</p> <p>○ CLASSROOM ENHANCEMENT SYSTEM INFRARED WIRELESS MICROPHONE RECEIVER CEILING MOUNTED. PROVIDE CAT 5 PATCH CABLE TO MAIN CONTROL UNIT IN TEACHER WARDROBE.</p>	<p>BUILDING LOADS:</p> <table border="1"> <thead> <tr> <th></th> <th>CONNECTED</th> <th>DEMAND</th> </tr> </thead> <tbody> <tr> <td>INDOOR LIGHTING</td> <td>80.0</td> <td>80.0</td> </tr> <tr> <td>RECEPTACLE</td> <td>316.0</td> <td>163.0</td> </tr> <tr> <td>COMPUTER RECEPTACLE</td> <td>148.0</td> <td>79.0</td> </tr> <tr> <td>HVAC</td> <td>1418.0</td> <td>1064.0</td> </tr> <tr> <td>KITCHEN</td> <td>283.0</td> <td>184.0</td> </tr> <tr> <td>MISC</td> <td>52.0</td> <td>39.0</td> </tr> <tr> <td>ELEVATOR</td> <td>27.0</td> <td>27.0</td> </tr> <tr> <td>TOTAL</td> <td>2324.0 KVA</td> <td>1636.0 KVA</td> </tr> </tbody> </table> <p>LARGEST MOTOR WATER TO WATER HEAT PUMP 196 MCA</p>		CONNECTED	DEMAND	INDOOR LIGHTING	80.0	80.0	RECEPTACLE	316.0	163.0	COMPUTER RECEPTACLE	148.0	79.0	HVAC	1418.0	1064.0	KITCHEN	283.0	184.0	MISC	52.0	39.0	ELEVATOR	27.0	27.0	TOTAL	2324.0 KVA	1636.0 KVA
	CONNECTED	DEMAND																												
INDOOR LIGHTING	80.0	80.0																												
RECEPTACLE	316.0	163.0																												
COMPUTER RECEPTACLE	148.0	79.0																												
HVAC	1418.0	1064.0																												
KITCHEN	283.0	184.0																												
MISC	52.0	39.0																												
ELEVATOR	27.0	27.0																												
TOTAL	2324.0 KVA	1636.0 KVA																												
			<p>STAND-BY POWER LOADS:</p> <table border="1"> <thead> <tr> <th>ATS-1</th> <th></th> <th></th> </tr> </thead> <tbody> <tr> <td>EMERGENCY LIGHTING</td> <td>41.0 KW</td> <td></td> </tr> <tr> <td>MISCELLANEOUS</td> <td>6.0 KW</td> <td></td> </tr> <tr> <td>ATS-2</td> <td></td> <td></td> </tr> <tr> <td>MISCELLANEOUS</td> <td>75.0 KW</td> <td></td> </tr> <tr> <td>TOTAL KW</td> <td>122 KW</td> <td></td> </tr> </tbody> </table> <p>PROVIDE 150KW 480V GAS GENERATOR</p>	ATS-1			EMERGENCY LIGHTING	41.0 KW		MISCELLANEOUS	6.0 KW		ATS-2			MISCELLANEOUS	75.0 KW		TOTAL KW	122 KW										
ATS-1																														
EMERGENCY LIGHTING	41.0 KW																													
MISCELLANEOUS	6.0 KW																													
ATS-2																														
MISCELLANEOUS	75.0 KW																													
TOTAL KW	122 KW																													
			<p>STAND-BY POWER LOADS:</p> <table border="1"> <thead> <tr> <th>ATS-3</th> <th></th> <th></th> </tr> </thead> <tbody> <tr> <td>HVAC</td> <td>433.0 KW</td> <td></td> </tr> <tr> <td>TOTAL KW</td> <td>433.0 KW</td> <td></td> </tr> </tbody> </table> <p>PROVIDE (2) 300KW-480V PARALLELED GAS GENERATOR</p>	ATS-3			HVAC	433.0 KW		TOTAL KW	433.0 KW																			
ATS-3																														
HVAC	433.0 KW																													
TOTAL KW	433.0 KW																													

MIDDLE SCHOOL NO. 20
 Howard County, Maryland
 Howard County Public School System

James Posey Associates
 Mechanical & Electrical Engineers
 9132 Lard Ballhoun Drive
 Baltimore, MD 21244
 Tel: 410-266-6100
 Fax: 410-266-6820
 www.jamesposey.com

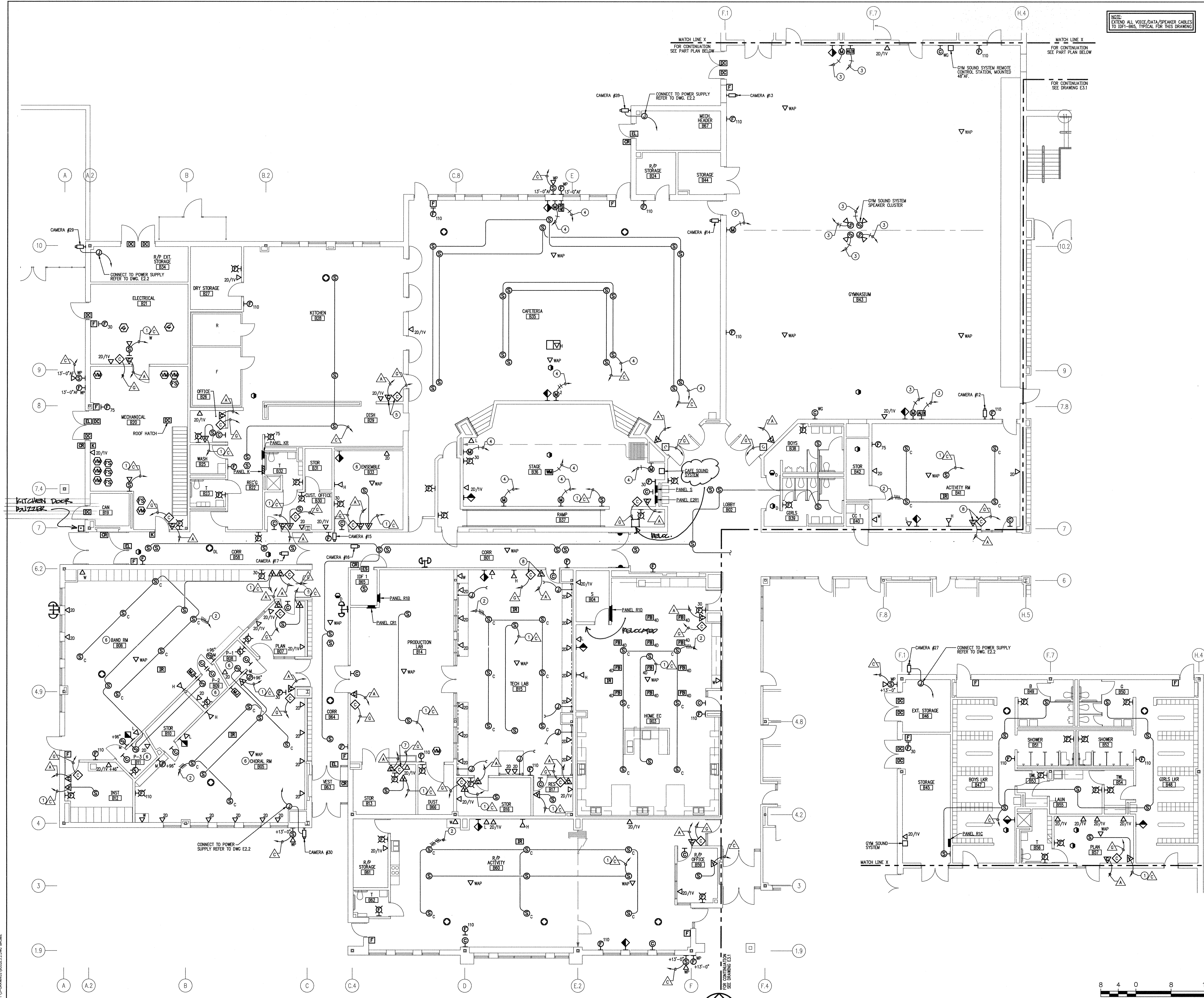
tca | architects
 Annapolis, Maryland

Professional Certification: I hereby certify that these documents were prepared or approved by me or under my direct supervision and I am a duly Licensed Professional Engineer under the laws of the State of Maryland, License No. 10293, Mechanical Engineering, expires 04-02-2015.

AS-BUILT DRAWINGS
 25 AUGUST 2014

BID & CONSTRUCTION
 14 JANUARY 13

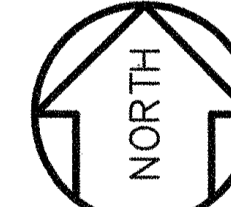
E0.1
 1 OF 28
 project no. 1103



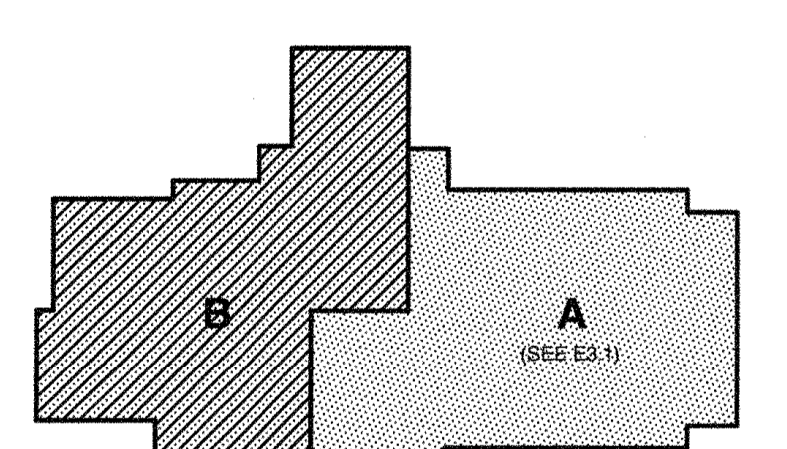
NOTE:
 EXTEND ALL VOICE/DATA/SPEAKER CABLES
 TO IDF-BS, TYPICAL FOR THIS DRAWING

- GENERAL NOTES:**
- REFER TO ARCHITECTURAL DRAWINGS FOR ADDITIONAL INFORMATION INCLUDING DEVICE LOCATION AND MOUNTING HEIGHTS, FURNITURE AND CASEWORK LAYOUTS AND REFLECTED CEILING PLANS. COORDINATE WITH ARCHITECTURAL DRAWINGS PRIOR TO ROUGH-IN.
 - REFER TO LIGHTING AND SYSTEMS DRAWINGS FOR ADDITIONAL OUTLET AND SWITCH LOCATIONS. COORDINATE LOCATIONS PRIOR TO ROUGH-IN.
 - REFER TO STRUCTURAL DRAWINGS FOR INFORMATION ON LOCATION AND DEPTH OF FOOTINGS. COORDINATE WITH STRUCTURAL DRAWINGS PRIOR TO ROUGH-IN OF LARGER SLAB CONDUIT RUNS.
- SPECIFIC NOTES:**
- CONDUIT AND WIRE TO CALL SWITCH.
 - EXTEND CLASSROOM SOUND SYSTEM SPEAKER CABLES TO TEACHERS WARDROBE DROP.
 - CONDUIT AND WIRE TO C/M SOUND SYSTEM. SEE RISER DIAGRAM 9/ES.3.
 - CONDUIT AND WIRE TO CAFETERIA SOUND SYSTEM. SEE RISER DIAGRAM 7/ES.3.
 - COORDINATE EXACT LOCATION WITH KITCHEN EQUIPMENT. SEE DRAWING ES.3.
 - COORDINATE WALL MOUNTED DEVICES WITH ARCH. SOUND PROOFING AND ACOUSTIC WALL PANELS.
 - COORDINATE OUTLET AND DEVICE LOCATIONS WITH SPRAY BOOTH LAYOUT.
 - COORDINATE OUTLET LOCATIONS WITH TACKBOARDS AND MARKERSBOARDS.

FIRST FLOOR PLAN - AREA 'B' - SYSTEMS
 SCALE: 1/8"=1'-0"



SCALE: 1/8" = 1'-0"
 NOTE: IF THIS DRAWING IS A REDUCTION,
 GRAPHIC SCALE MUST BE USED.



FIRST FLOOR KEY PLAN

MIDDLE SCHOOL NO. 20
 Howard County, Maryland
 Howard County Public School System

Professional Certification: I hereby certify that these documents were prepared or approved by me or under my direct supervision and I am a duly Licensed Professional Engineer under the laws of the State of Maryland, License No. 12354, Expiration Date: 04-02-2015.

James Posey Associates
 Engineering Your Vision
 Mechanical & Electrical Engineers
 3112 Lord Baltimore Drive
 Baltimore, MD 21244
 Tel: 410-296-8200
 Fax: 410-296-8201
 www.jposey.com

tca | architects
 Annapolis, Maryland

revisions
BUILDING PERMIT/ CD REVIEW 15 NOVEMBER 12
AS-BUILT DRAWINGS 25 AUGUST 2014
BID & CONSTRUCTION 14 JANUARY 13
E3.2
13 OF 28
project no. 1103

DATE: 08/23/2015 09:47:07
 Drawing: 11-Middle-School-20-Howard-County-Public-School-System-ES.2-DWG-BROWNE

© 2011 James Posey Associates, Inc.



DLR Group of D.C., P.C.

a District of Columbia professional corporation

419 7th Street NW, 2nd Floor

Washington, D.C. 20007

March 22, 2022

**BID CLARIFICATION NO. 2
TO THE DRAWINGS
FOR**

**HOWARD COUNTY PUBLIC SCHOOL SYSTEM
THOMAS VIADUCT MIDDLE SCHOOL CLASSROOM RENOVATION
DLR Group Project No. 56-22107-00**

Prepared by:

DLR Group

419 7th Street NW, 2nd Floor

Washington, DC 20004

The Drawings and Specifications for the above-named Project, dated March 01, 2022, are modified, amended, and supplemented as set forth in this Addendum, dated March 11, 2022, and shall be taken into account in preparing Bids. The Addendum shall become part of the Contract Documents.

Wherein the Addendum is in conflict with the Specifications and Drawings, the requirements of this Addendum shall govern.

ITEM NO. 1 – At Sheet AD1.0, the following clarifications should be applied:

- The Keynote #21 will be revised to “Remove Door and Frame for reinstallation at the new Classroom B-61. Door will swing into the classroom. Existing door to be modified with a cut out at the bottom of door for a Lexan panel insert. See detail 5A/A1.4 Type 1 Door for the Lexan panel size at bottom half of door.”
- At 5C/AC1.0, keynote #20 will be revised to the following, "Door and Frame to remain."
- Door swing at existing B61 was revised to swing into the room

ITEM NO. 2 – At Sheet A1.4 detail 6D/Door Schedule, make the following changes:

- Pertaining to Door A72, revise Door Note 1 to "Existing Frame to Remain".
- Pertaining to Door B60, revise Remarks to Note 6 to "Reinstalled existing door and frame salvaged from Storage B61 door. Cut door for Lexan panel installation per Door Type 1 panel size."
- At doors B61 and door B-60, Furnish floor and/or wall stops to match existing. All stops shall be heavy duty cast. Comply with ASI/BHMA A156.16.

ITEM NO. 3 – At Sheet A1.1, make the following revisions :

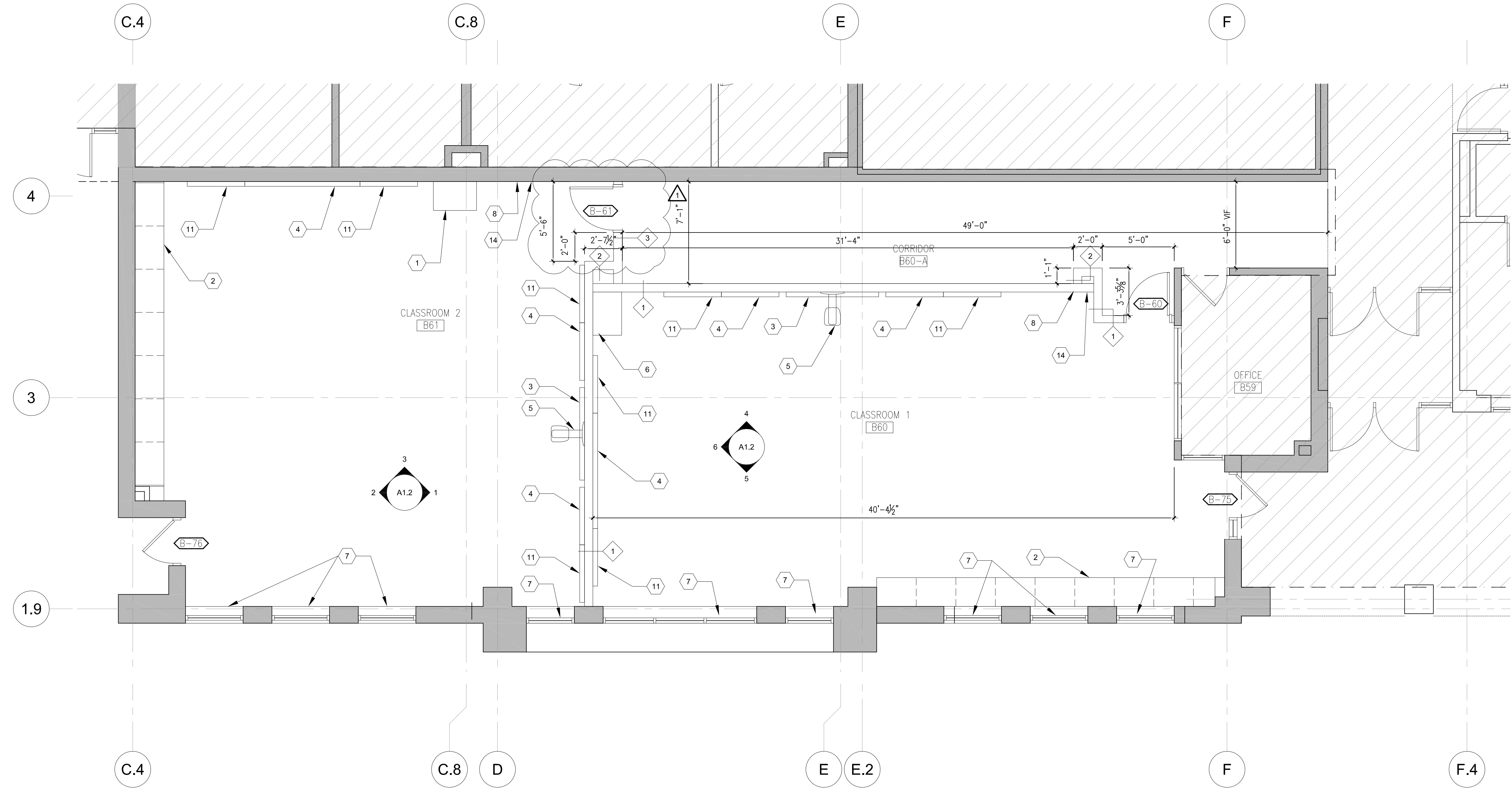
- At detail 3A/A1.1, change door swing at B-61 to RH into the classroom
- At detail 5C/A1.1, change door at A-72 to existing door and frame to remain.
- Change keynote #8 to “Reinstall clock removed from room A72 and B60.”
- At detail 3/A, add keynote 15 “Provide flag holder.”

ITEM NO. 4 – Provide the following information to the specifications, Division 10 Specialties:

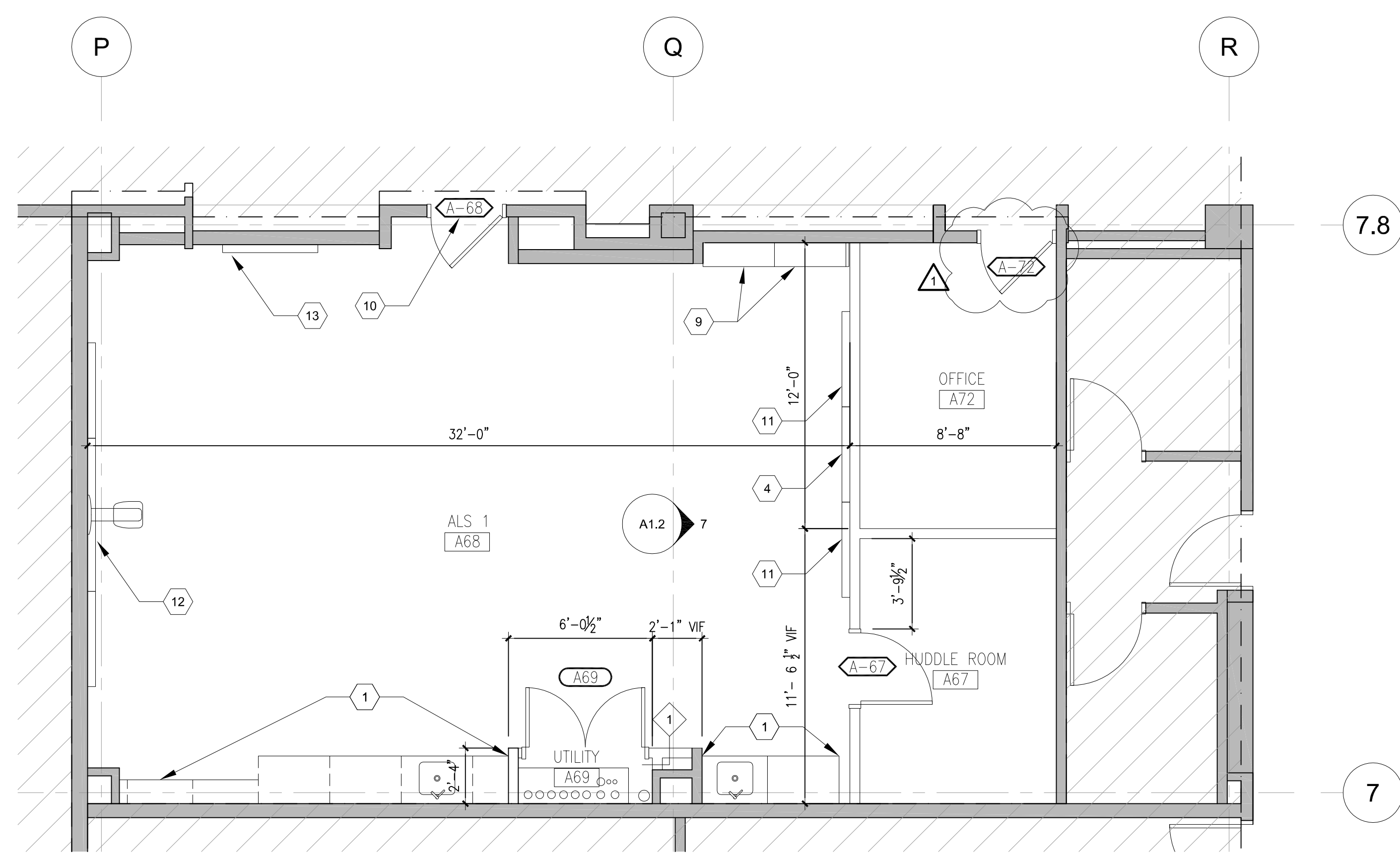
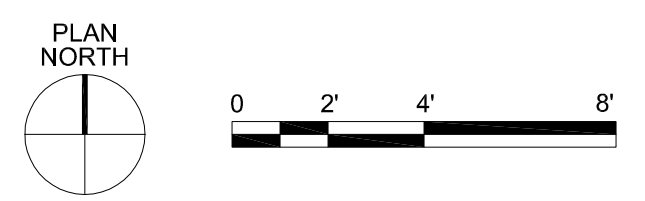
- Provide room signs to match existing that are manufactured and/or supplied by Andco Industries, or by Signs and Wonders Inc. 410-442-8243, or equivalent.
- Tack Boards and Marker Boards and Projector Boards, aluminum framed trim and accessories to match existing classroom details. Color shall be natural Tan for Tack Boards. Provide marker trays at markerboards. Provide trim clips and mullion trim between markerboard and tack board. Provide same length display rail at top of all Markerboards. Manufacturer for Tack Boards and Marker Boards: Marsh (1-800-426-4244), Claridge, ARCO Products Inc .
- Flag Holder shall be wall mounted Model EWC as manufactured by U.S.D. Flag service, Frederick, MD 301- 473-8141

END OF ADDENDUM NO. 2

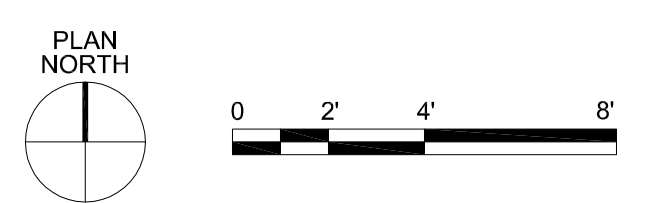
FILE: \\Virginia\Arch\Projects\WCS\16-22107-00\16-22107-00_11_Plan_Plans.dwg
 PLOT: 16-22107-00_11_Plan_Plans.dwg



3A FLOOR PLAN-- NEW WORK ROOM B60, B61
 A1.1 SCALE: 1/4" = 1'-0"



5C FLOOR PLAN - NEW WORK ROOMS A67, A68, A72
 A1.1 SCALE: 1/4" = 1'-0"



GENERAL NOTES	
1.	INSTALL NEW CEILING THROUGHOUT (GROUND AND FIRST FLOOR) INCLUDING SUSPENSION SYSTEM. REINSTALL SALVAGED DEVICES - SEE MEP DRAWINGS FOR MORE INFORMATION.
2.	CLEAN PATCH AND FINISH DEMOLISHED CONDITIONS TO MATCH ADJACENT NEW WORK.
3.	ALL NEW PARTITIONS ARE TYPE-1, U.N.O.
4.	FURNISH AND INSTALL FIRE-TREATED BLOCKING OR METAL BACKING PLATE IN METAL STUD PARTITIONS FOR THE PROPER ANCHORAGE OF ALL WALL ATTACHED ITEMS, I.E. CASEWORK, MILLWORK, WALL MOUNTED FIXTURES, MARKER BOARDS, TACK BOARDS, DOOR STOPS, AUDIO VISUAL BRACKETS, AND OTHER ATTACHED ITEMS.
5.	EXISTING CORRIDOR DOORS TO BE RE-USED.

KEY NOTES	
1	EXISTING MILLWORK TO REMAIN, INCLUDING TEACHER'S CABINET WITH AV EQUIPMENT
2	NEW CASEWORK SHELVING UNITS, SEE A1.2
3	PROJECTION BOARD
4	MARKER BOARD
5	REINSTALLED, SALVAGED PROJECTOR
6	NEW MILLWORK, TEACHER'S CABINET, SEE A1.2
7	NEW WINDOW TREATMENT AT WINDOWS TO MATCH EXISTING
8	REINSTALL SALVAGED CLOCK FROM ROOM A72 AND B60
9	RELOCATED EXISTING BOOKSHELVES SALVAGED FROM ROOM A72, SEE DEMO NOTE 10
10	REINSTALLED EXISTING WALL MOUNTED CLOCK ABOVE DOOR
11	TACKBOARD 4'x4', MOUNT AT 2'-8" AFF
12	EXISTING MARKER BOARDS, PROJECTOR BOARD, AND PROJECTOR
13	EXISTING TACKBOARD
14	PROVIDE FLAGHOLDER

LEGEND	
	EXIST. WALL TO REMAIN
	PROPOSED PARTITION
	EXIST. DOOR & FRAME TO REMAIN
	PROPOSED DOOR
	NOT IN CONTRACT

PROFESSIONAL CERTIFICATION:
 I HEREBY CERTIFY THAT THESE DOCUMENTS WERE PREPARED OR APPROVED BY ME, AND THAT I AM A DULY LICENSED ARCHITECT UNDER THE LAWS OF THE STATE OF MARYLAND, LICENSE NO. 16986, EXPIRATION DATE: 07-09-2022.

APPROVAL