

**ADDENDUM NO. 1**

**November 10, 2022**

**RE: Controls Upgrade Cradlerock ES / Lake Elkhorn MS (HCPSS Bid #020.23.B3)**

**FROM: Purchasing Office  
Howard County Public Schools  
10910 Clarksville Pike  
Ellicott City, MD 21042  
(410) 313-6723  
(410) 313-6789 fax**

**TO: APPROVED PROSPECTIVE BIDDERS**

---

This addendum forms a part of the Contract Documents and modifies the Original Bidding Documents as noted below. Acknowledge receipt of this Addendum in the space provided on the Form of Proposal. Failure to do so may subject the Bidder to disqualification. This Addendum consists of one (1) page.

**VIRTUAL PRE-BID MEETING:**

1. **Drawings M2.7 through M2.11 are indicated on the Drawing List on T0.1 but were not included in the Bid Documents. Are they applicable?**
  - a. Yes. Those drawings were inadvertently overlooked and are being issued as part of this addendum.

**CHANGES TO THE SPECIFICATIONS:**

1. None at this time.

**END OF ADDENDUM NO. 1**

**SHEET NOTES**

- ① REMOVE EXISTING DUCTWORK AS INDICATED AND PATCH, SEAL AND REINSULATE DUCT AT MAIN TO MAINTAIN PRESSURE RATING OF DUCTWORK.
- ② REMOVE EXISTING DUCTWORK AND HANGERS AS REQUIRED TO INSTALL NEW DUCTWORK SHOWN ON NEW WORK PLAN. REMOVE AND RELOCATE ALL DUCT-MOUNTED SMOKE DETECTORS AND FLOW SENSORS AS REQUIRED (SOME MAY NOT BE SHOWN) TO INSTALL NEW DUCTWORK SHOWN ON NEW WORK PLAN.
- ③ PROVIDE SLIP-IN ELECTRIC DUCT HEATER AS SHOWN. CONTRACTOR SHALL TEMPORARILY REMOVE INSULATION AS REQUIRED AND FIELD MEASURE EXISTING DUCT SIZES PRIOR TO RELEASING DUCT HEATERS. PROVIDE MINIMUM UPSTREAM AND DOWNSTREAM DISTANCES TO FITTINGS AND BRANCH TAKE-OFFS AS REQUIRED BY MANUFACTURER. CONTRACTOR SHALL ENSURE THAT PROPER SERVICE CLEARANCES ARE MAINTAINED IN FRONT OF CONTROL BOX. REFER TO CONTROL DIAGRAMS AND SCHEDULE FOR ADDITIONAL INFORMATION. AFTER INSTALLATION OF DUCT HEATER, REPLACE DUCT INSULATION AS REQUIRED.
- ④ PROVIDE DUCTWORK AS INDICATED AND CONNECT TO EXISTING. PROVIDE TRANSITIONS AND OFFSETS AS REQUIRED.
- ⑤ PROVIDE HARD ROUND DUCT CONNECTIONS TO TERMINAL UNITS. SIZES SHALL BE THE SAME SIZE AS THE INLET SIZED INDICATED IN THE SCHEDULES ON M3.1. PROVIDE OFFSETS AS REQUIRED TO ACCOMMODATE EXISTING FIELD CONDITIONS. DUCTS SHALL NOT INTERFERE WITH SERVICE CLEARANCE REQUIREMENTS OF CONTROL BOX OF ELECTRIC DUCT HEATERS. EQUIVALENT RECTANGULAR DUCTWORK MAY BE USED IF REQUIRED TO ACCOMMODATE EXISTING CONDITIONS. EXTERNALLY INSULATE ALL NEW DUCTS AND SEAL ALL JOINTS AND EDGES VAPOR TIGHT.
- ⑥ RELOCATE EXISTING DIFFUSER AND 8" DIAMETER FLEXIBLE DUCT TO LOCATIONS SHOWN ON NEW FLOOR PLAN.

SEAL

Professional Certification, I certify that these documents were prepared or approved by me, and that I am a duly licensed engineer under the laws of the State of Maryland, License Number 44890, expiration date 01/08/2024.

**CONSULTANTS**

MECHANICAL ENGINEERS

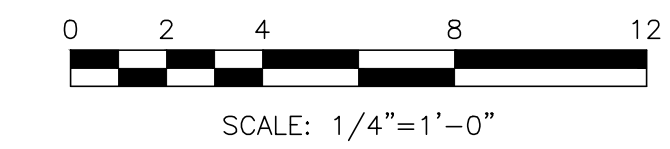
**BUILDING DYNAMICS, LLC**  
8600 FOUNDRY ST., SUITE 306  
MILL BOX 2054  
SAVAGE, MD 20783  
building-dynamics.com

ELECTRICAL ENGINEERS

**M S ENGINEERS, INC.**  
10260 OLD COLUMBIA ROAD, SUITE A  
COLUMBIA, MD 21046  
P: 410-997-1200  
www.msengineers.net

PROJECT

**CRADLEROCK ES / LAKE ELKHORN MS  
CONTROLS UPGRADE  
6700 CRADLEROCK WAY  
COLUMBIA, MD 21045**



**PART PLANS - ACU-3**

SCALE: 1/4" = 1'-0"

2

KEY PLAN

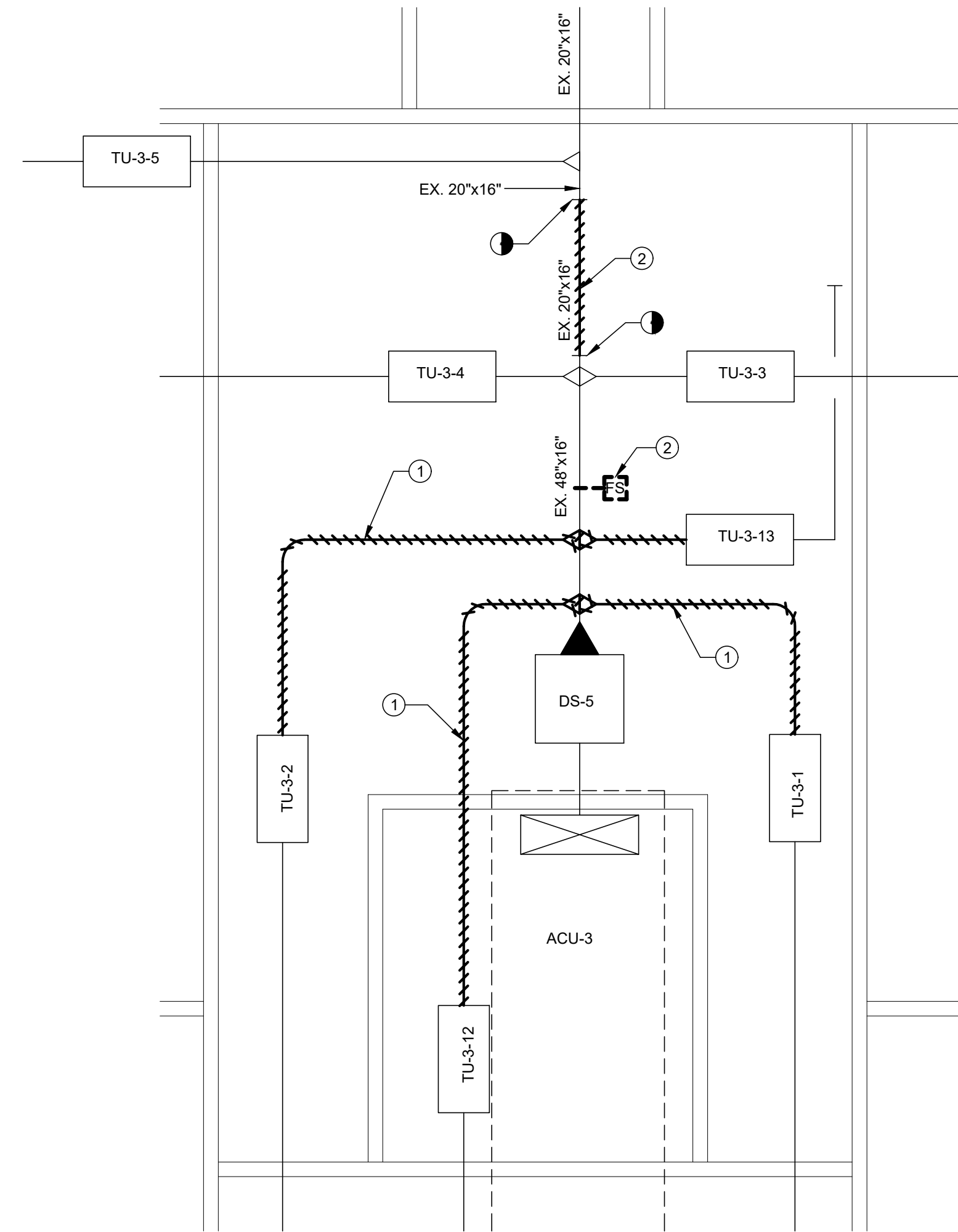
NO.	DESCRIPTION	DATE
1	ADDENDUM NO. 1	11/02/2023
2	100% CONSTRUCTION DOCUMENTS	10/25/2022

DRAWING

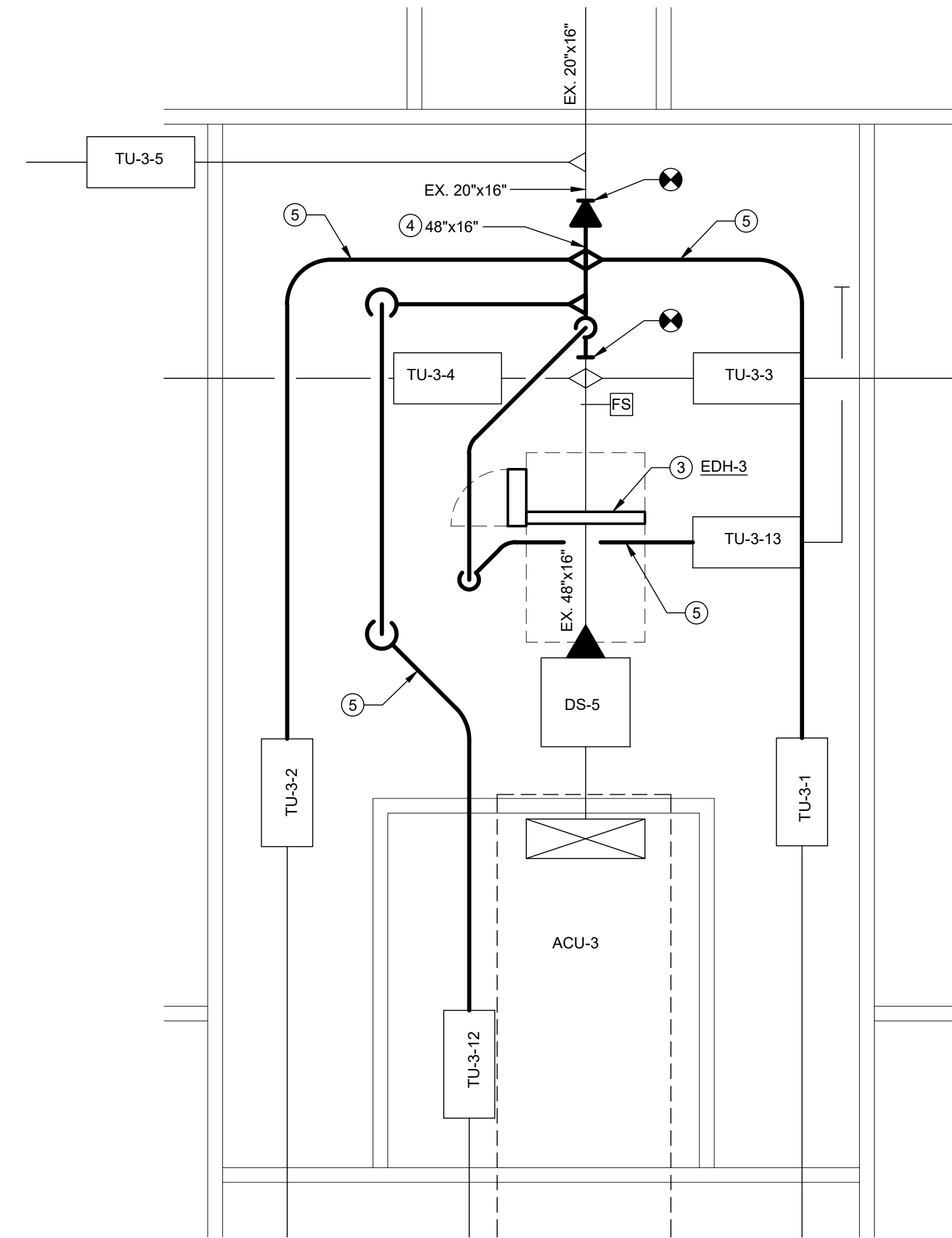
**PART PLANS - ACU-3 & 4**

DRAWN BY	RML
CHECKED BY	JRB
PROJECT NO.	202201
SCALE	1/4"=1'-0"
SHEET	

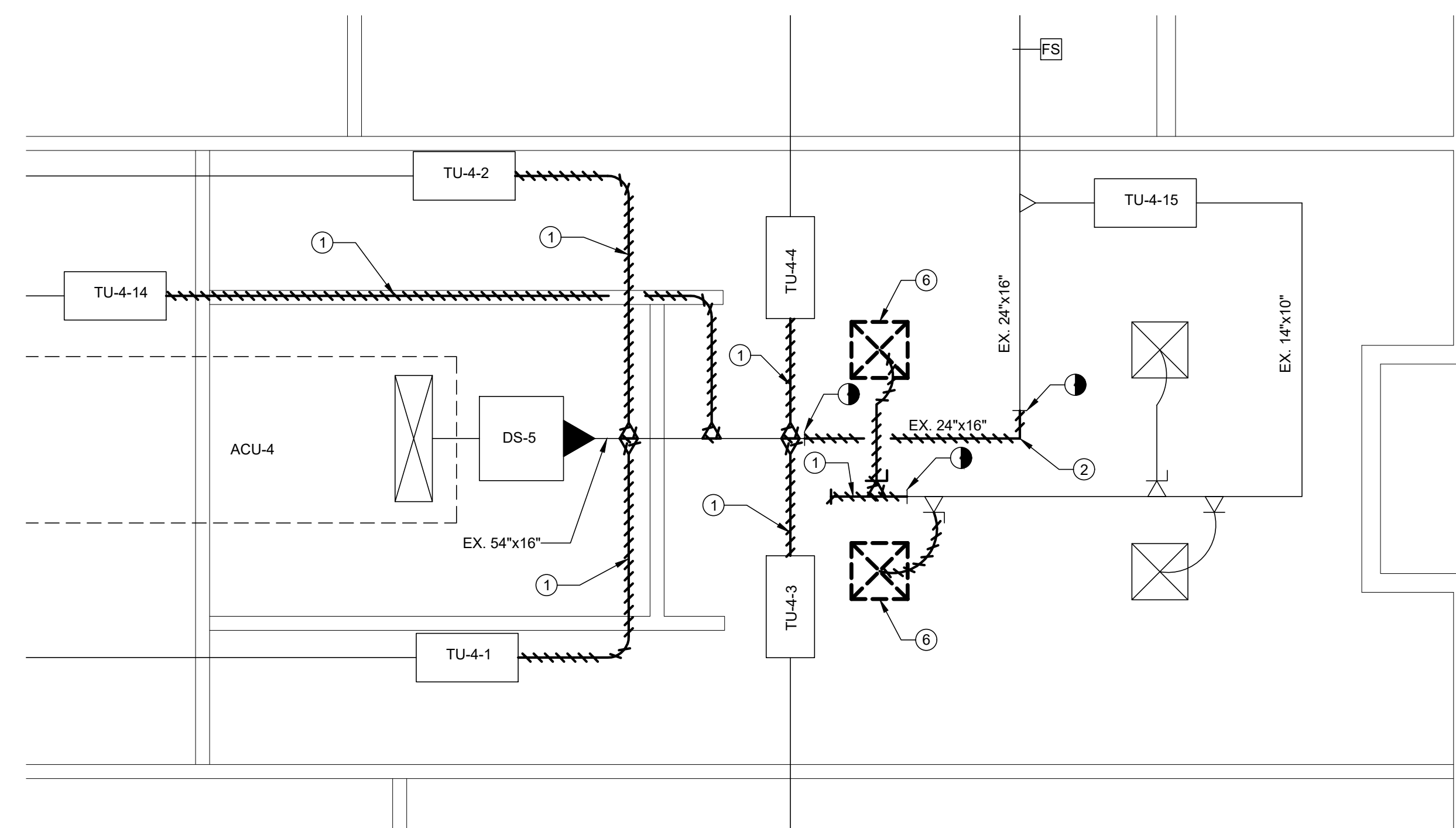
**M2.7**



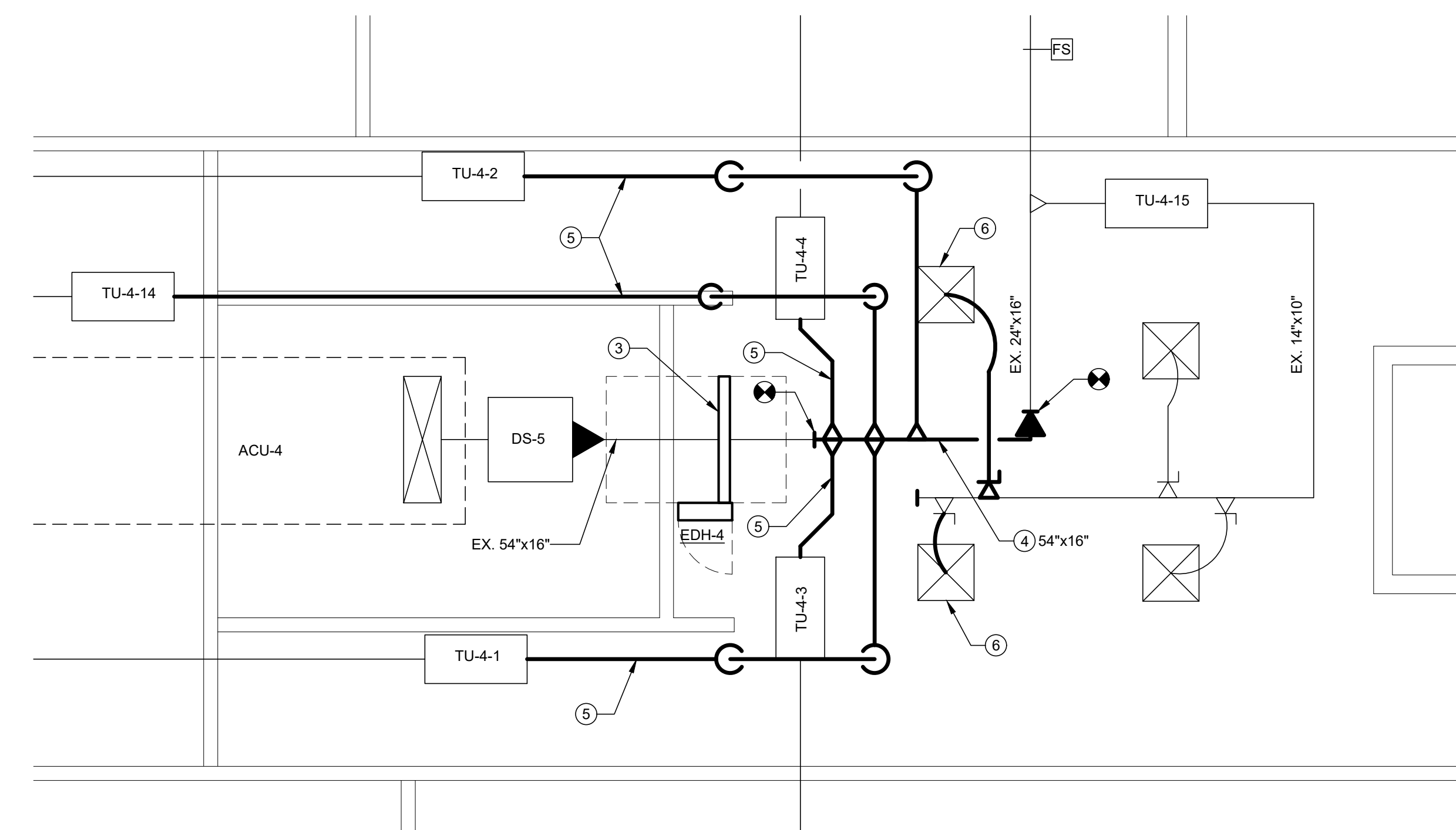
**DEMOLITION**



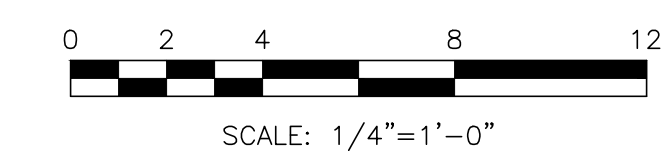
**NEW WORK**



**DEMOLITION**



**NEW WORK**



**PART PLAN - ACU-4**

SCALE: 1/4" = 1'-0"

1

SHEET NOTES

- ① REMOVE EXISTING DUCTWORK AS INDICATED AND PATCH, SEAL AND REINSULATE DUCT AT MAIN TO MAINTAIN PRESSURE RATING OF DUCTWORK.
- ② REMOVE EXISTING DUCTWORK AND HANGERS AS REQUIRED TO INSTALL NEW DUCTWORK SHOWN ON NEW WORK PLAN. REMOVE AND RELOCATE ALL DUCT-MOUNTED SMOKE DETECTORS AND FLOW SENSORS AS REQUIRED (SOME MAY NOT BE SHOWN) TO INSTALL NEW DUCTWORK SHOWN ON NEW WORK PLAN.
- ③ PROVIDE SLIP-IN ELECTRIC DUCT HEATER AS SHOWN. CONTRACTOR SHALL TEMPORARILY REMOVE INSULATION AS REQUIRED AND FIELD MEASURE EXISTING DUCT SIZES PRIOR TO RELEASING DUCT HEATERS. PROVIDE MINIMUM UPSTREAM AND DOWNSTREAM DISTANCES TO FITTINGS AND BRANCH TAKE-OFFS AS REQUIRED BY MANUFACTURER. CONTRACTOR SHALL ENSURE THAT PROPER SERVICE CLEARANCES ARE MAINTAINED IN FRONT OF CONTROL BOX. REFER TO CONTROL DIAGRAMS AND SCHEDULE FOR ADDITIONAL INFORMATION. AFTER INSTALLATION OF DUCT HEATER, REPLACE DUCT INSULATION AS REQUIRED.
- ④ PROVIDE DUCTWORK AS INDICATED AND CONNECT TO EXISTING. PROVIDE TRANSITIONS AND OFFSETS AS REQUIRED.
- ⑤ PROVIDE HARD ROUND DUCT CONNECTIONS TO TERMINAL UNITS. SIZES SHALL BE THE SAME SIZE AS THE INLET SIZED INDICATED IN THE SCHEDULES ON M3.1. PROVIDE OFFSETS AS REQUIRED TO ACCOMMODATE EXISTING FIELD CONDITIONS. DUCTS SHALL NOT INTERFERE WITH SERVICE CLEARANCE REQUIREMENTS OF CONTROL BOX OF ELECTRIC DUCT HEATERS. EQUIVALENT RECTANGULAR DUCTWORK MAY BE USED IF REQUIRED TO ACCOMMODATE EXISTING CONDITIONS. EXTERNALLY INSULATE ALL NEW DUCTS AND SEAL ALL JOINTS AND EDGES VAPOR TIGHT.



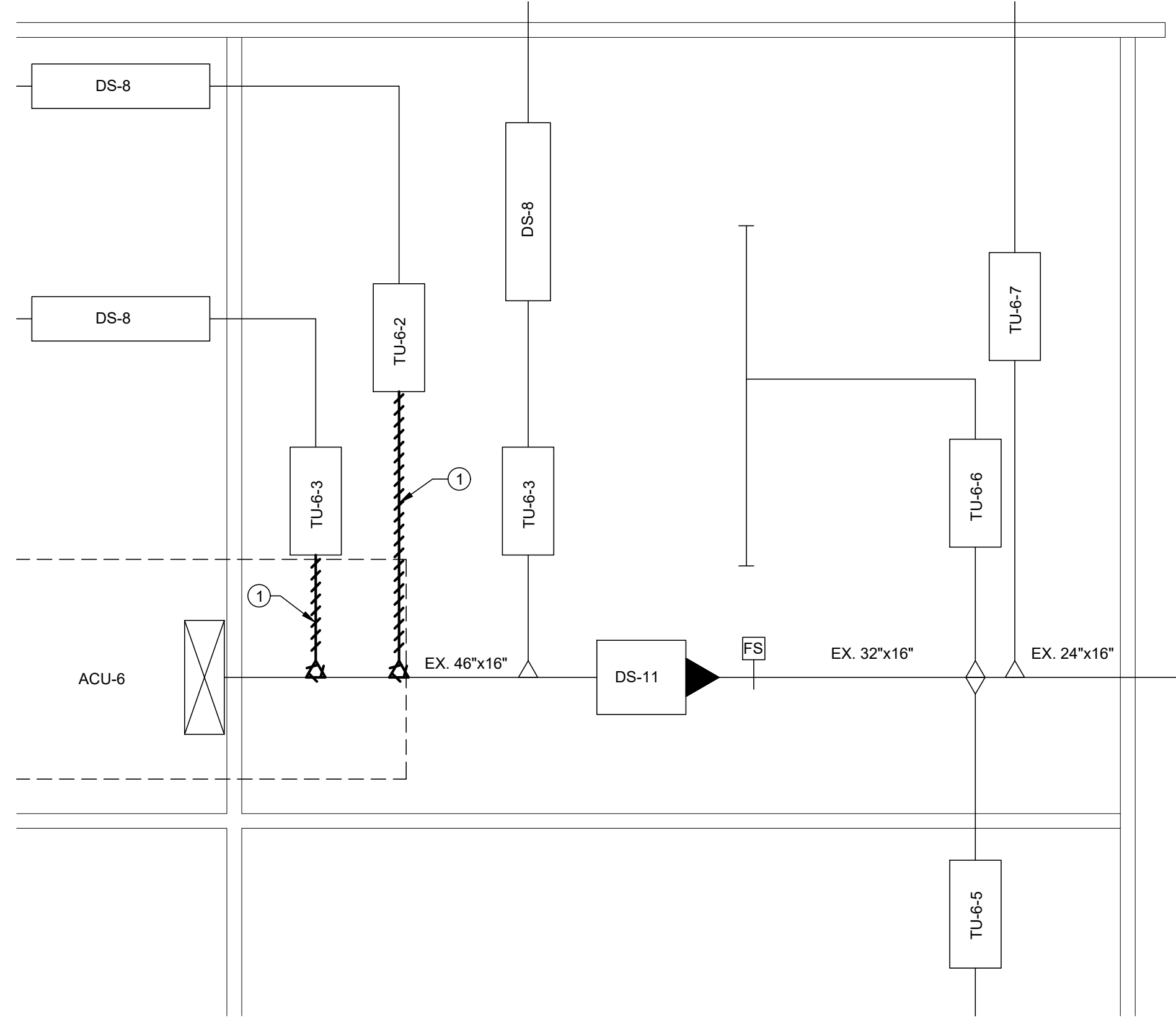
Howard County Public School System  
9020 Mendenhall Court  
Columbia, MD 21045

Professional Certification, I certify that these documents were prepared or approved by me, and that I am a duly licensed engineer under the laws of the State of Maryland, License Number 44890, expiration date 01/08/2024.

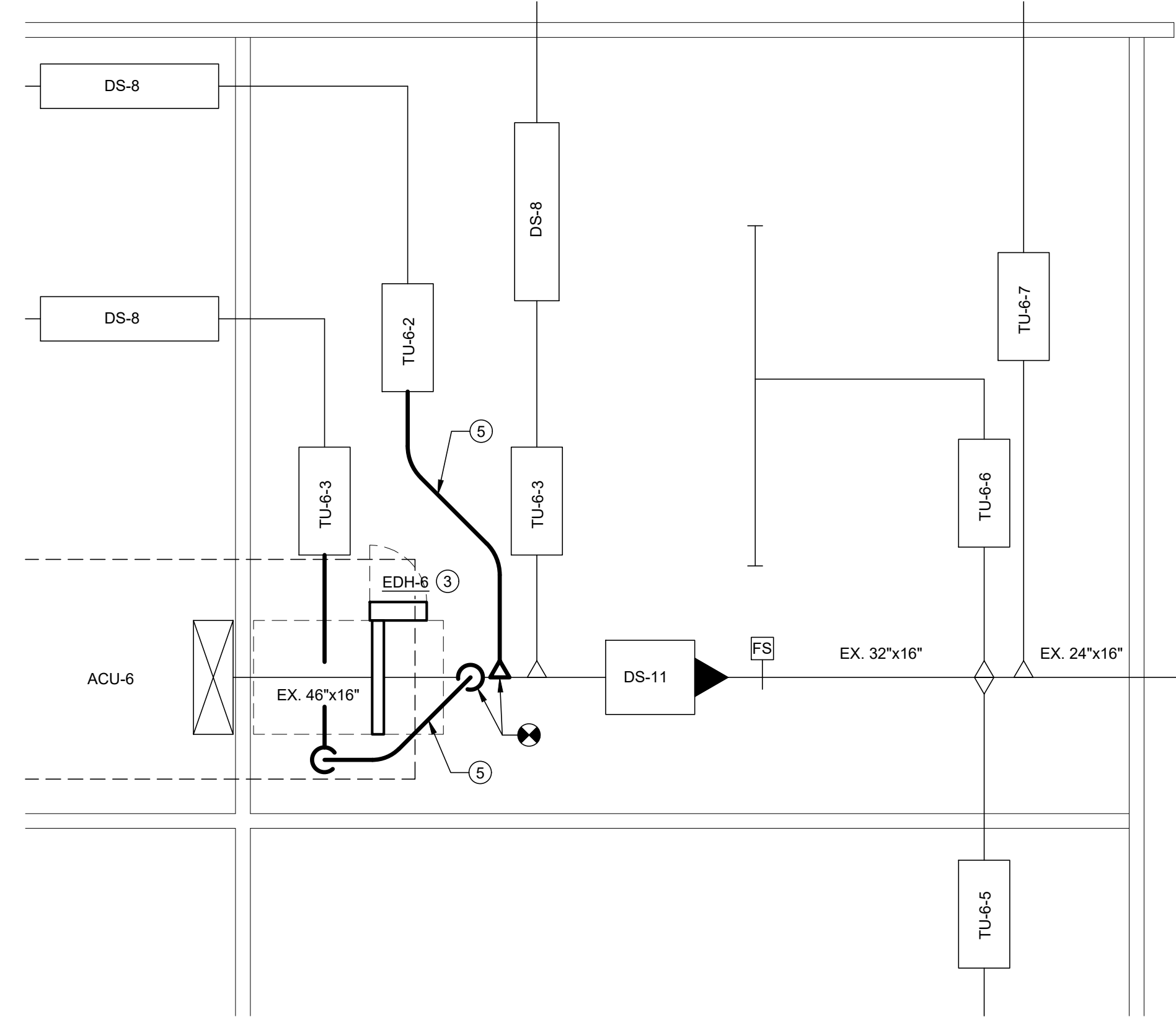
CONSULTANTS

MECHANICAL ENGINEERS  
BUILDING DYNAMICS, LLC  
8600 FOUNDRY ST., SUITE 306  
MILL BOX 2054  
SAVAGE, MD 20783  
building-dynamics.com

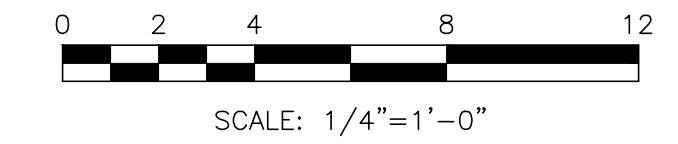
ELECTRICAL ENGINEERS  
M S ENGINEERS, INC.  
10260 OLD COLUMBIA ROAD, SUITE A  
COLUMBIA, MD 21046  
P: 410-997-1200  
www.msengineers.net



DEMOLITION



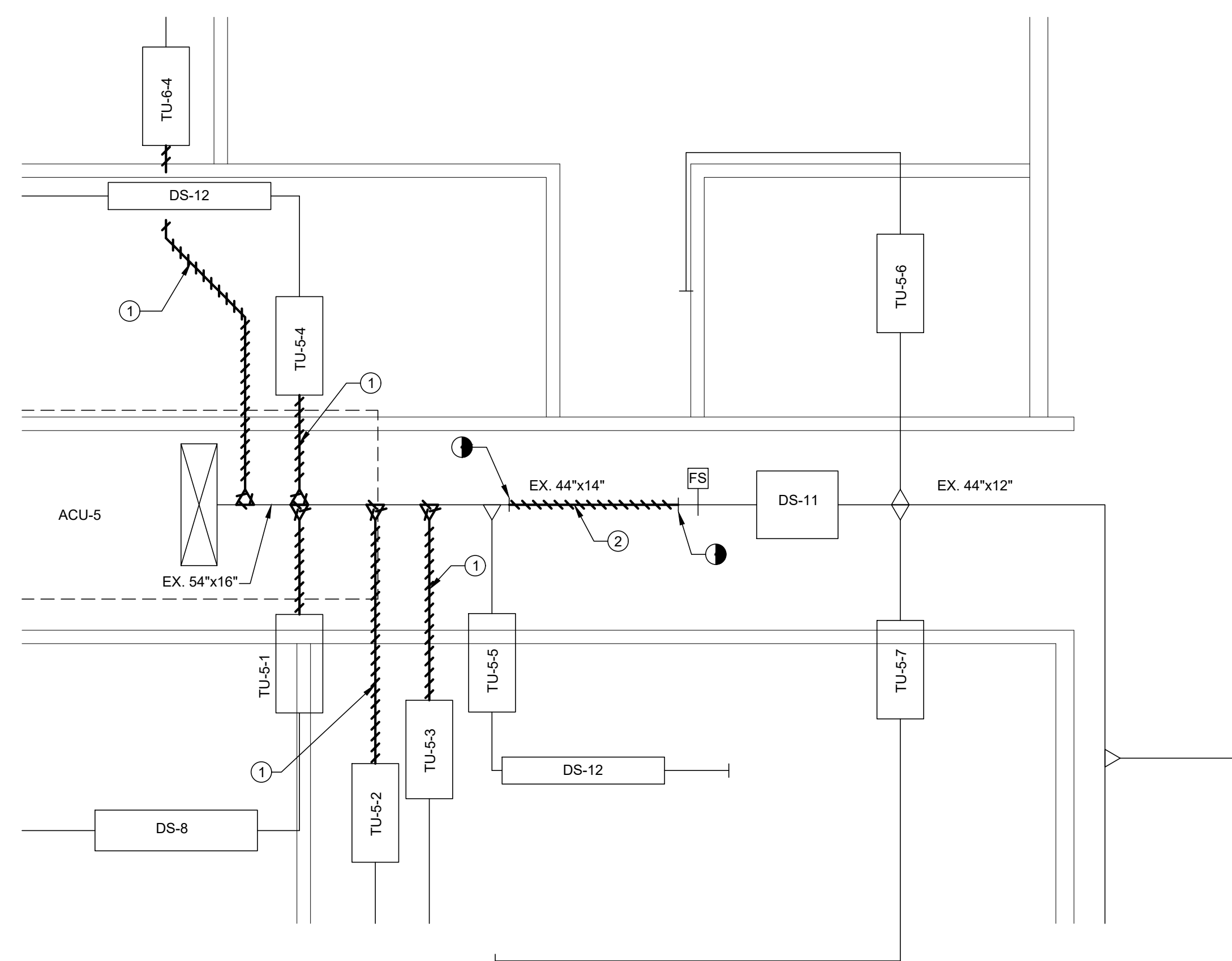
NEW WORK



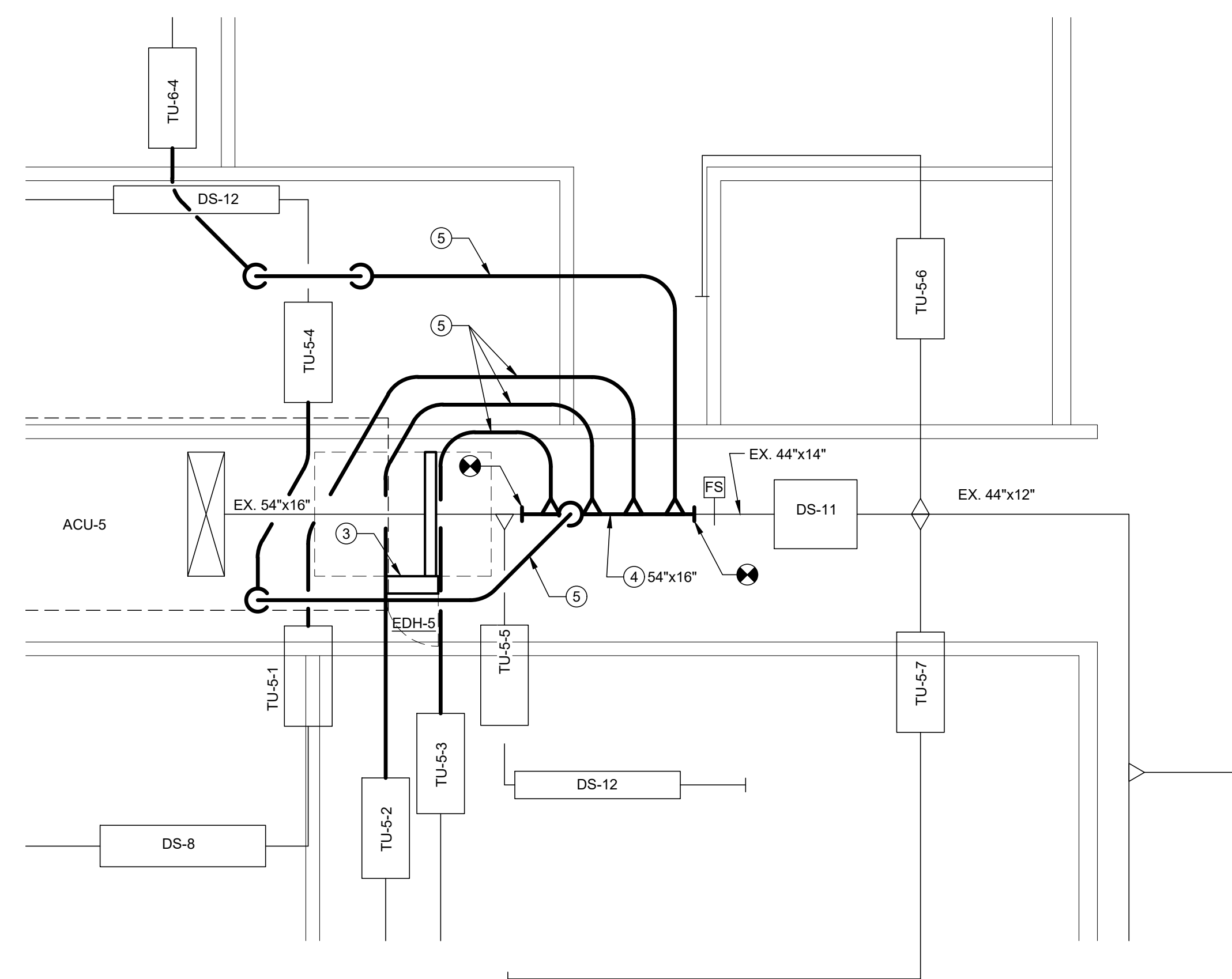
PART PLANS - ACU-6

SCALE: 1/4" = 1'-0"

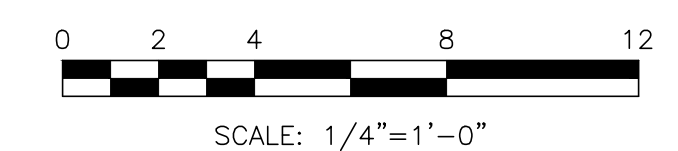
2



DEMOLITION



NEW WORK



PART PLAN - ACU-5

SCALE: 1/4" = 1'-0"

1

CRADLEROCK ES / LAKE ELKHORN MS  
CONTROLS UPGRADE  
6700 CRADLEROCK WAY  
COLUMBIA, MD 21045

KEY PLAN

NO.	DESCRIPTION	DATE
1	ADDENDUM NO. 1	11/02/2023
2	100% CONSTRUCTION DOCUMENTS	10/25/2022

DRAWING

PART PLANS - ACU-5 & 6

DRAWN BY	RML
CHECKED BY	JRB
PROJECT NO.	202201
SCALE	1/4"=1'-0"
SHEET	

M2.8

SHEET NOTES

- ① REMOVE EXISTING DUCTWORK AS INDICATED AND PATCH, SEAL AND REINSULATE DUCT AT MAIN TO MAINTAIN PRESSURE RATING OF DUCTWORK.
- ② PROVIDE SLIP-IN ELECTRIC DUCT HEATER AS SHOWN. CONTRACTOR SHALL TEMPORARILY REMOVE INSULATION AS REQUIRED AND FIELD MEASURE EXISTING DUCT SIZES PRIOR TO RELEASING DUCT HEATERS. PROVIDE MINIMUM UPSTREAM AND DOWNSTREAM DISTANCES TO FITTINGS AND BRANCH TAKE-OFFS AS REQUIRED BY MANUFACTURER. CONTRACTOR SHALL ENSURE THAT PROPER SERVICE CLEARANCES ARE MAINTAINED IN FRONT OF CONTROL BOX. REFER TO CONTROL DIAGRAMS AND SCHEDULE FOR ADDITIONAL INFORMATION. AFTER INSTALLATION OF DUCT HEATER, REPLACE DUCT INSULATION AS REQUIRED.
- ③ PROVIDE HARD ROUND DUCT CONNECTIONS TO TERMINAL UNITS. SIZES SHALL BE THE SAME SIZE AS THE INLET SIZED INDICATED IN THE SCHEDULES ON M3.1. PROVIDE OFFSETS AS REQUIRED TO ACCOMMODATE EXISTING FIELD CONDITIONS. DUCTS SHALL NOT INTERFERE WITH SERVICE CLEARANCE REQUIREMENTS OF CONTROL BOX OF ELECTRIC DUCT HEATERS. EQUIVALENT RECTANGULAR DUCTWORK MAY BE USED IF REQUIRED TO ACCOMMODATE EXISTING CONDITIONS. EXTERNALLY INSULATE ALL NEW DUCTS AND SEAL ALL JOINTS AND EDGES VAPOR TIGHT.



Howard County Public School System  
9020 Mendenhall Court  
Columbia, MD 21045

SEAL

Professional Certification, I certify that these documents were prepared or approved by me, and that I am a duly licensed engineer under the laws of the State of Maryland, License Number 44890, expiration date 01/08/2024.

CONSULTANTS

MECHANICAL ENGINEERS

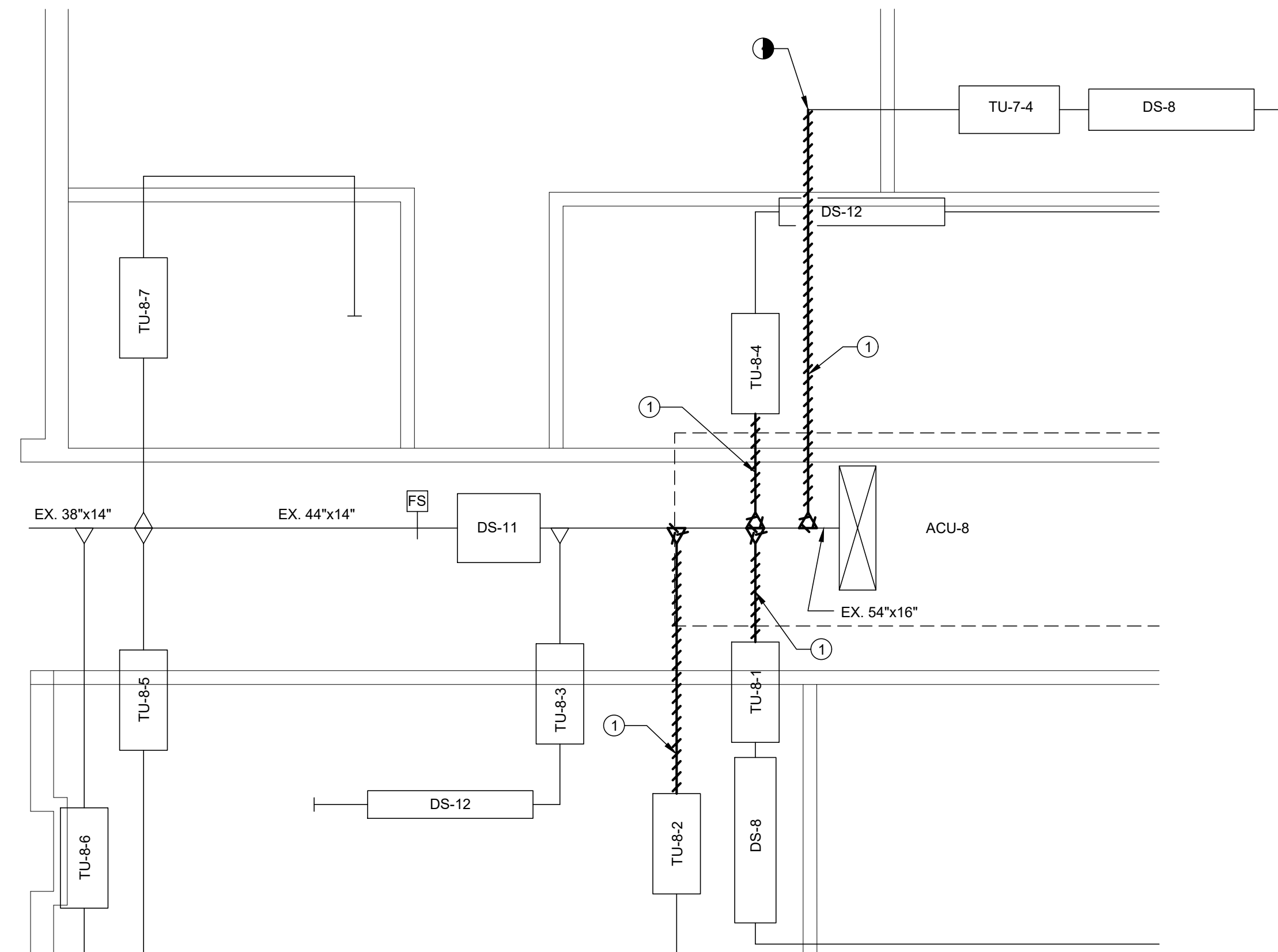
**BUILDING DYNAMICS, LLC**  
8600 FOUNDRY ST., SUITE 306  
MILL BOX 2054  
SAVAGE, MD 20783  
building-dynamics.com

ELECTRICAL ENGINEERS

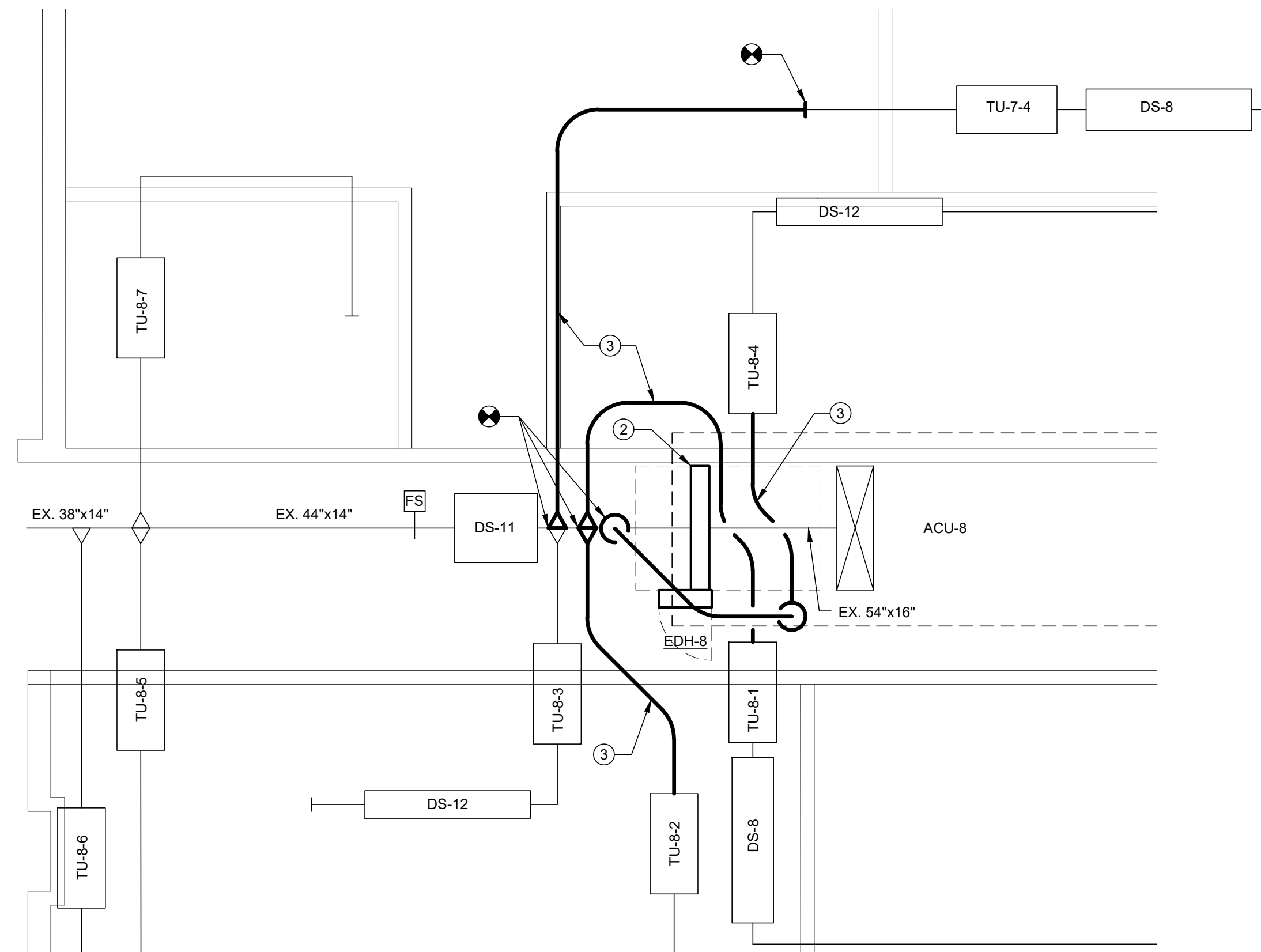
**M S ENGINEERS, INC**  
10260 OLD COLUMBIA ROAD, SUITE A  
COLUMBIA, MD 21046  
P: 410-997-1200  
www.msengineers.net

PROJECT

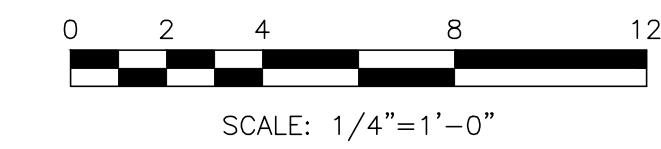
**CRADLEROCK ES / LAKE ELKHORN MS  
CONTROLS UPGRADE  
6700 CRADLEROCK WAY  
COLUMBIA, MD 21045**



DEMOLITION



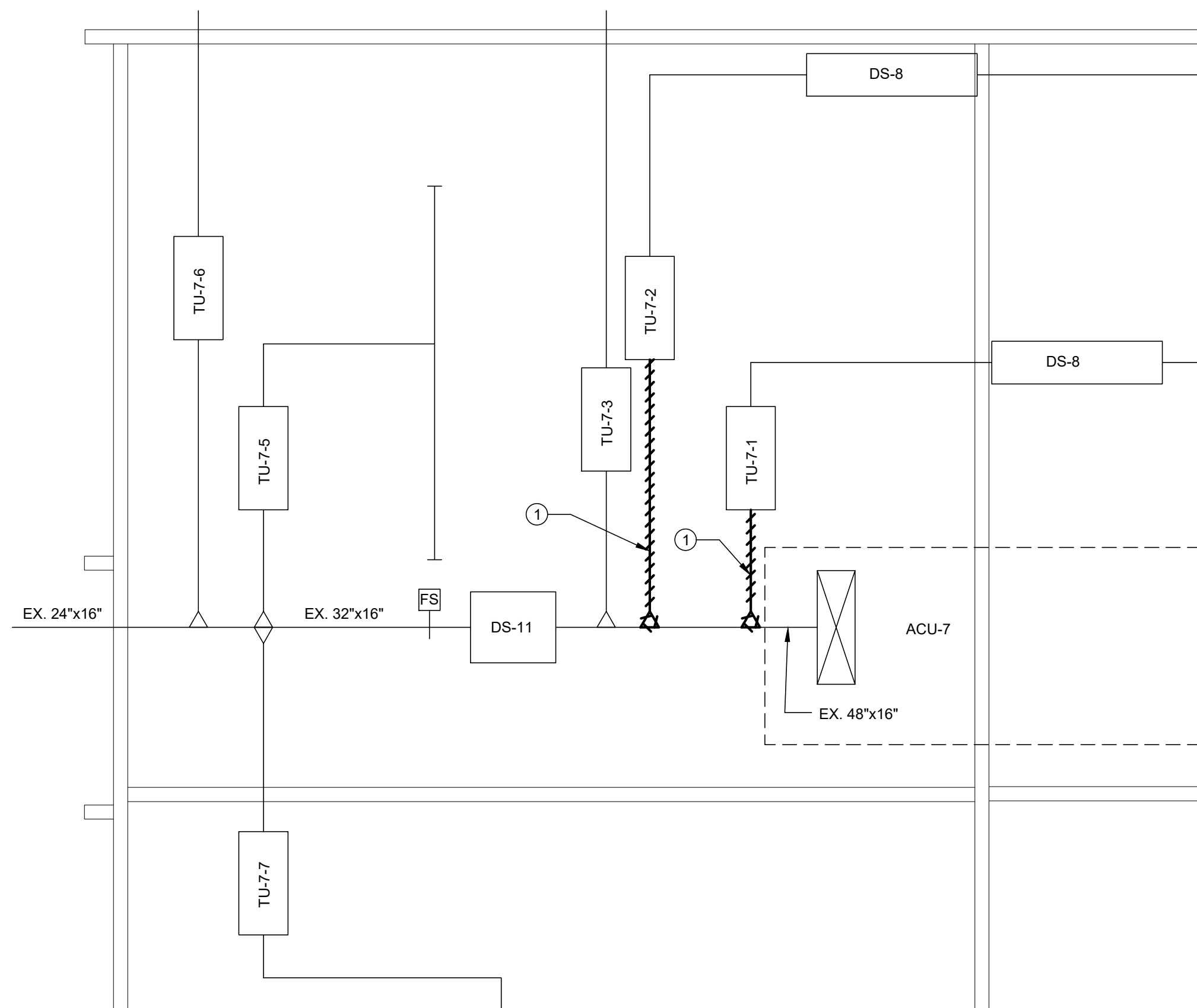
NEW WORK



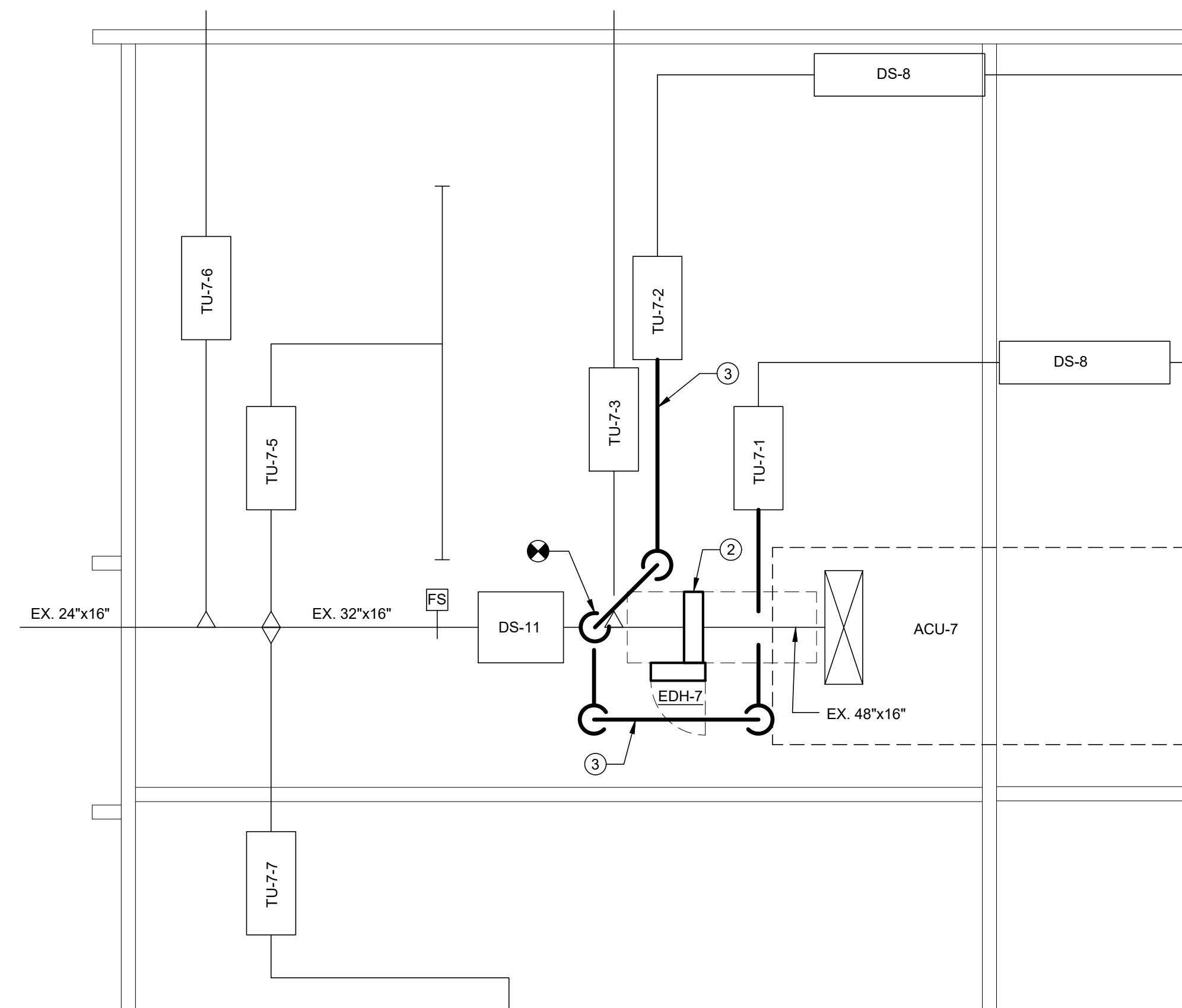
PART PLANS - ACU-8

SCALE: 1/4" = 1'-0"

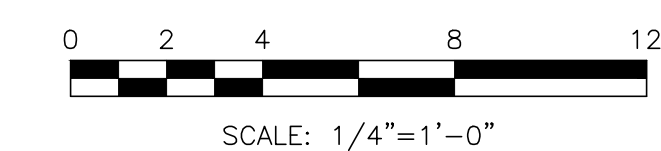
2



DEMOLITION



NEW WORK



PART PLAN - ACU-7

SCALE: 1/4" = 1'-0"

1

KEY PLAN

NO.	DESCRIPTION	DATE
1	ADDENDUM NO. 1	11/02/2023
2	100% CONSTRUCTION DOCUMENTS	10/25/2022

DRAWING

PART PLANS - ACU-7 & 8

DRAWN BY	RML
CHECKED BY	JRB
PROJECT NO.	202201
SCALE	1/4"=1'-0"
SHEET	

**M2.9**

SEAL

Professional Certification, I certify that these documents were prepared or approved by me, and that I am a duly licensed engineer under the laws of the State of Maryland, License Number 44890, expiration date 01/08/2024.

CONSULTANTS

MECHANICAL ENGINEERS

BUILDING DYNAMICS, LLC  
8600 FOUNDRY ST., SUITE 306  
MILL BOX 2054  
SAVAGE, MD 20783  
building-dynamics.com

ELECTRICAL ENGINEERS

M S ENGINEERS, INC.  
10260 OLD COLUMBIA ROAD, SUITE A  
COLUMBIA, MD 21046  
P: 410-997-1200  
www.msengineers.net

PROJECT

CRADLEROCK ES / LAKE ELKHORN MS  
CONTROLS UPGRADE  
6700 CRADLEROCK WAY  
COLUMBIA, MD 21045

KEY PLAN

NO.	DESCRIPTION	DATE
1	ADDENDUM NO. 1	11/02/2023
2	100% CONSTRUCTION DOCUMENTS	10/25/2022

DRAWING

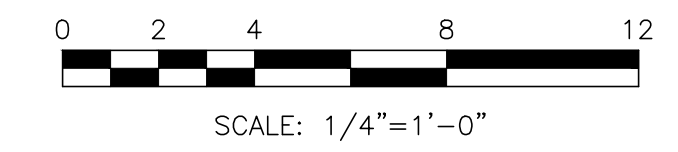
PART PLANS - ACU-9 & 10

DRAWN BY	RML
CHECKED BY	JRB
PROJECT NO.	202201
SCALE	1/4"=1'-0"
SHEET	

M2.10

SHEET NOTES

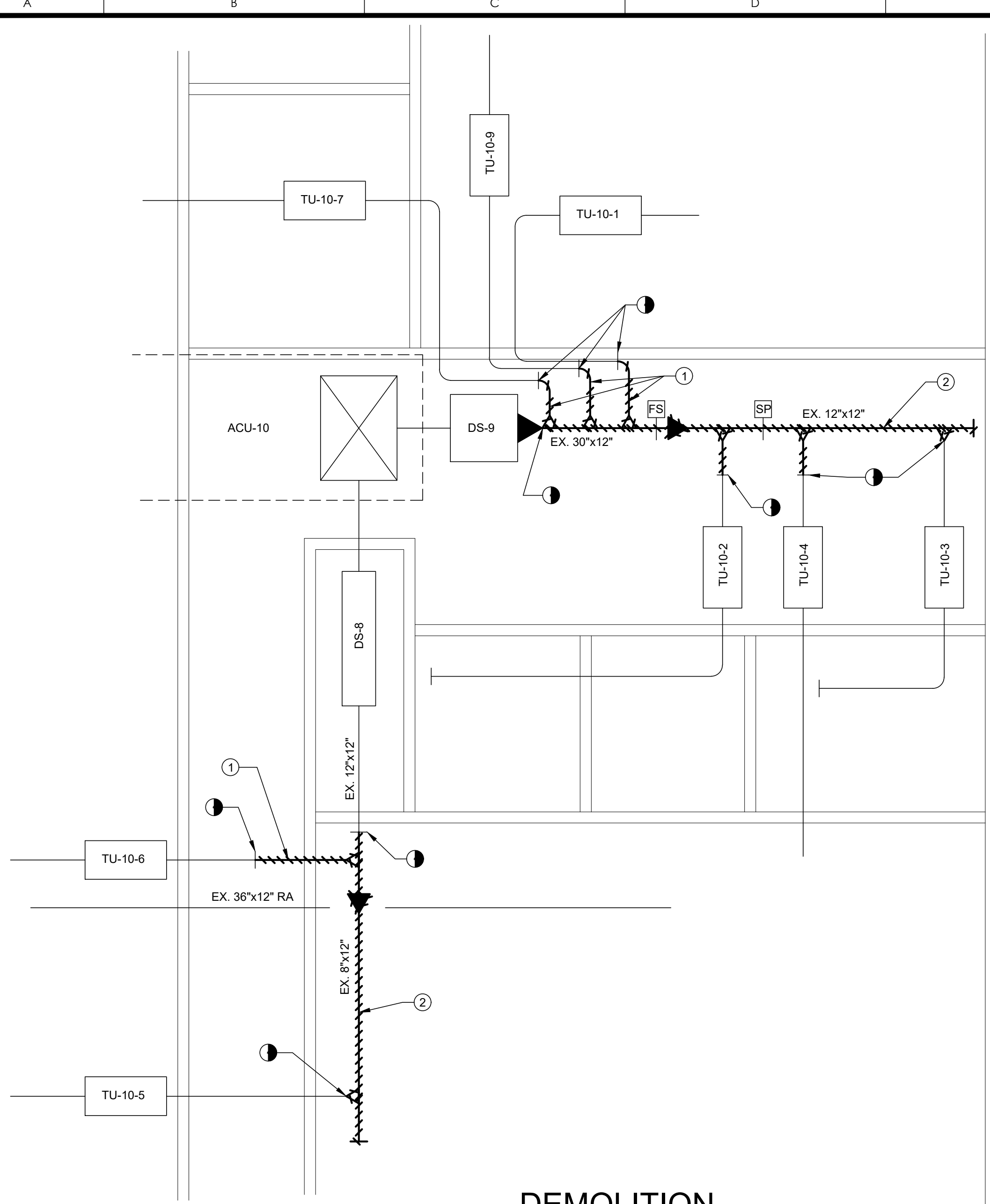
- REMOVE EXISTING DUCTWORK AS INDICATED AND PATCH, SEAL AND REINSULATE DUCT AT MAIN TO MAINTAIN PRESSURE RATING OF DUCTWORK.
- REMOVE EXISTING DUCTWORK AND HANGERS AS REQUIRED TO INSTALL NEW DUCTWORK SHOWN ON NEW WORK PLAN. REMOVE AND RELOCATE ALL DUCT-MOUNTED SMOKE DETECTORS AND FLOW SENSORS AS REQUIRED (SOME MAY NOT BE SHOWN) TO INSTALL NEW DUCTWORK SHOWN ON NEW WORK PLAN.
- PROVIDE SLIP-IN ELECTRIC DUCT HEATER AS SHOWN. CONTRACTOR SHALL TEMPORARILY REMOVE INSULATION AS REQUIRED AND FIELD MEASURE EXISTING DUCT SIZES PRIOR TO RELEASING DUCT HEATERS. PROVIDE MINIMUM UPSTREAM AND DOWNSTREAM DISTANCES TO FITTINGS AND BRANCH TAKE-OFFS AS REQUIRED BY MANUFACTURER. CONTRACTOR SHALL ENSURE THAT PROPER SERVICE CLEARANCES ARE MAINTAINED IN FRONT OF CONTROL BOX. REFER TO CONTROL DIAGRAMS AND SCHEDULE FOR ADDITIONAL INFORMATION. AFTER INSTALLATION OF DUCT HEATER, REPLACE DUCT INSULATION AS REQUIRED.
- PROVIDE DUCTWORK AS INDICATED AND CONNECT TO EXISTING. PROVIDE TRANSITIONS AND OFFSETS AS REQUIRED.
- PROVIDE HARD ROUND DUCT CONNECTIONS TO TERMINAL UNITS. SIZES SHALL BE THE SAME SIZE AS THE INLET SIZED INDICATED IN THE SCHEDULES ON M3.1. PROVIDE OFFSETS AS REQUIRED TO ACCOMMODATE EXISTING FIELD CONDITIONS. DUCTS SHALL NOT INTERFERE WITH SERVICE CLEARANCE REQUIREMENTS OF CONTROL BOX OF ELECTRIC DUCT HEATERS. EQUIVALENT RECTANGULAR DUCTWORK MAY BE USED IF REQUIRED TO ACCOMMODATE EXISTING CONDITIONS. EXTERNALLY INSULATE ALL NEW DUCTS AND SEAL ALL JOINTS AND EDGES VAPOR TIGHT.



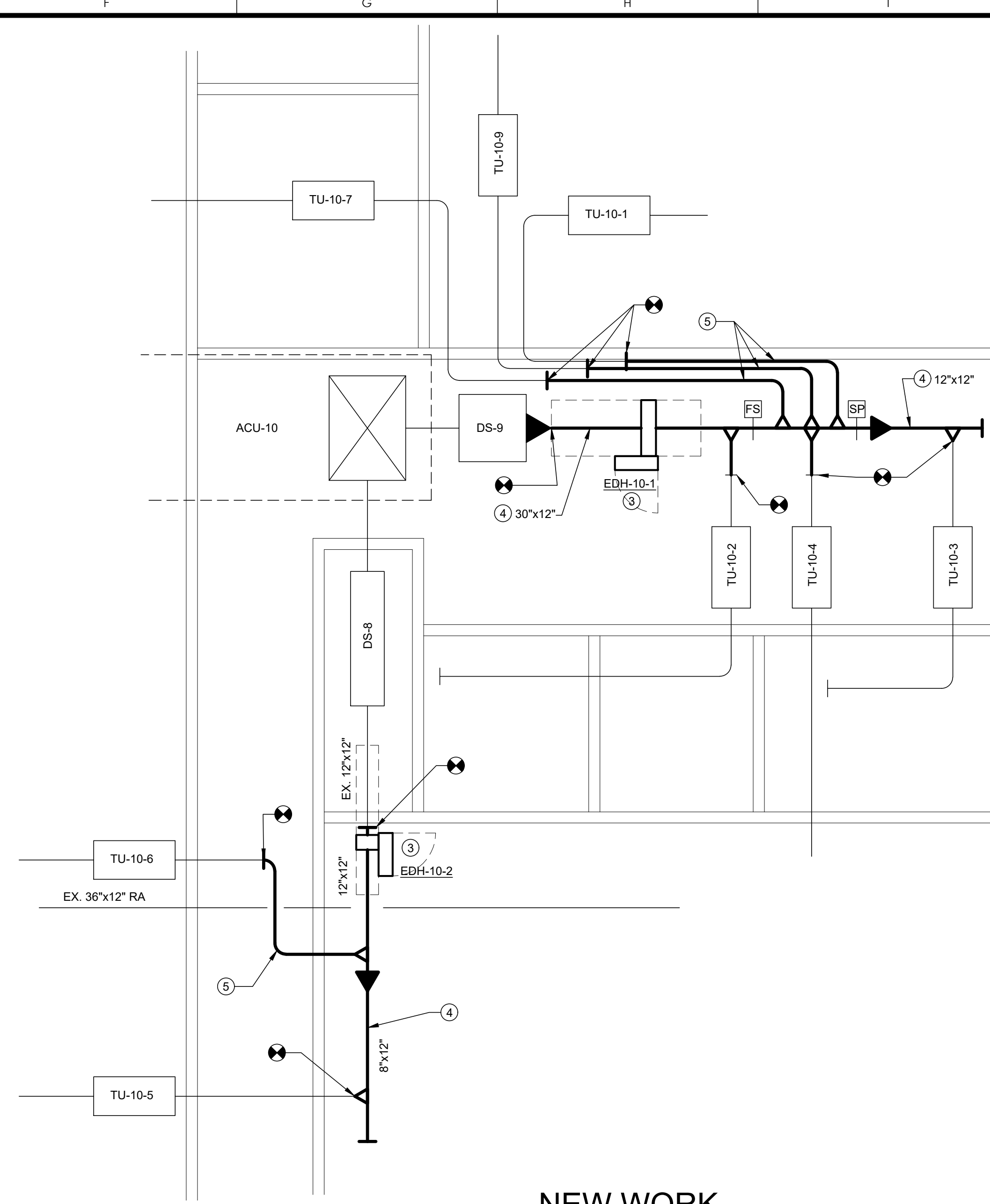
PART PLANS - ACU-10

SCALE: 1/4" = 1'-0"

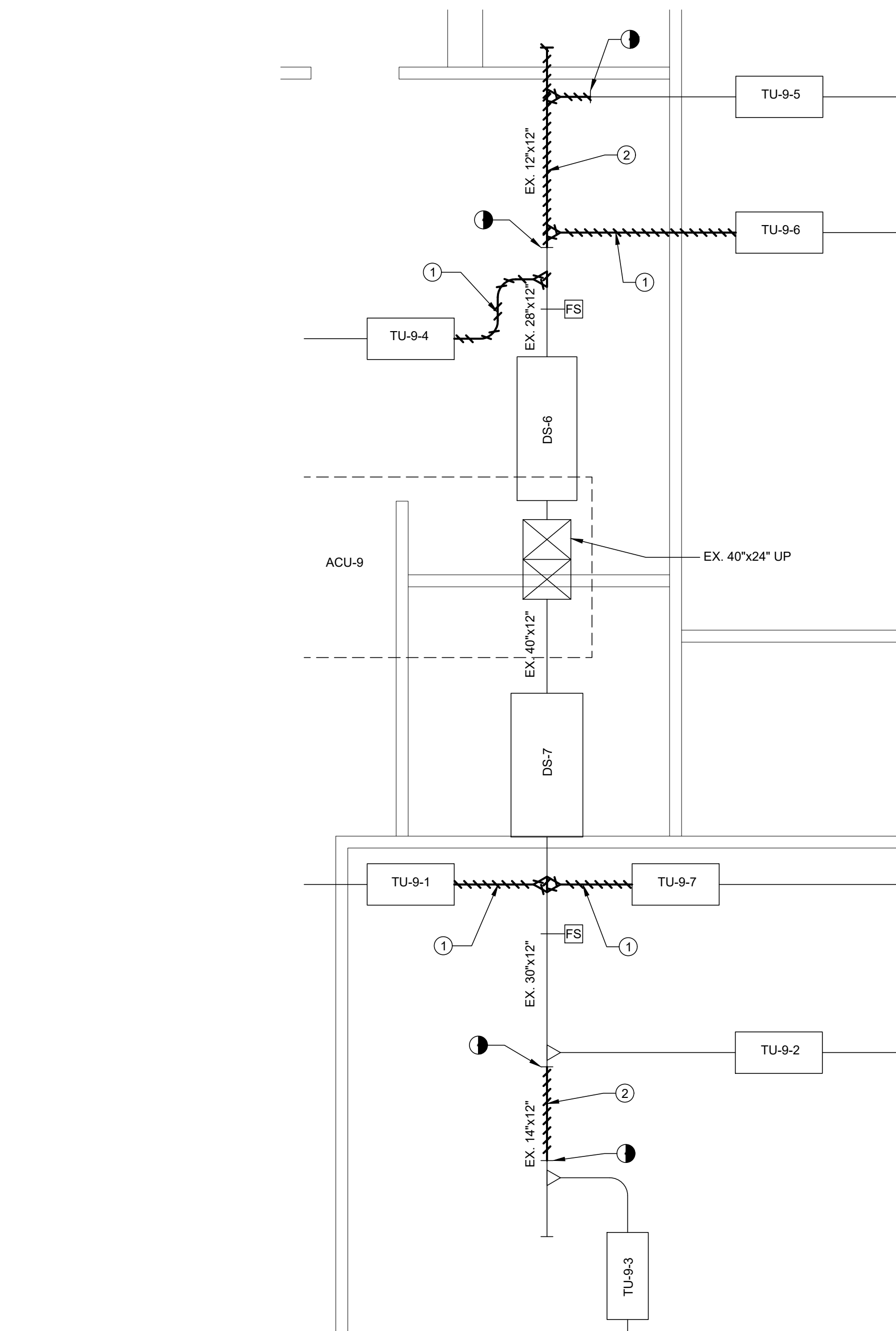
2



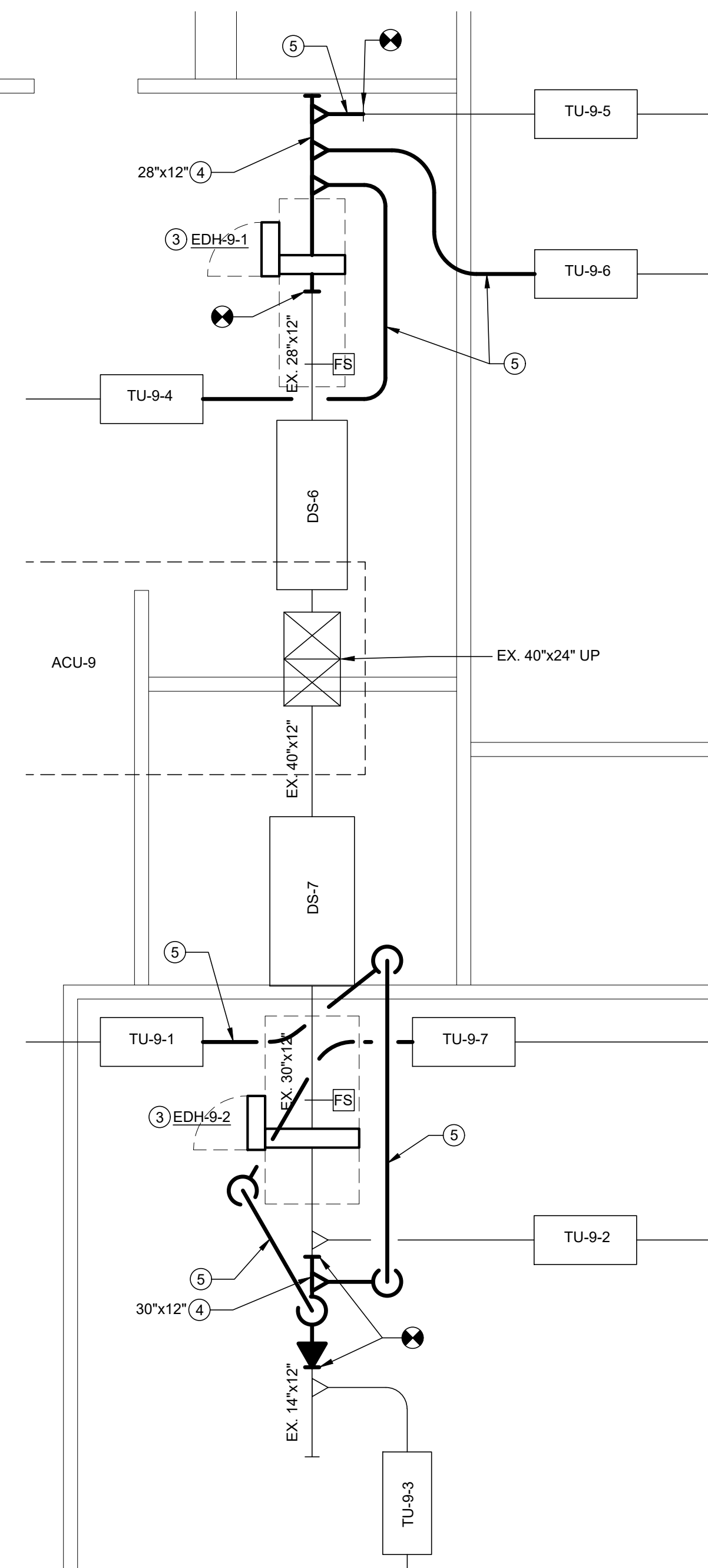
DEMOLITION



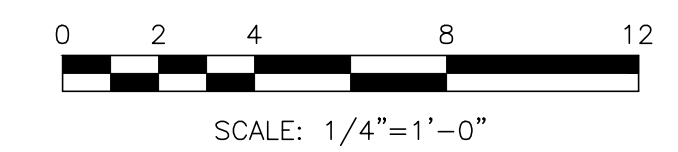
NEW WORK



DEMOLITION



NEW WORK



PART PLAN - ACU-9

SCALE: 1/4" = 1'-0"

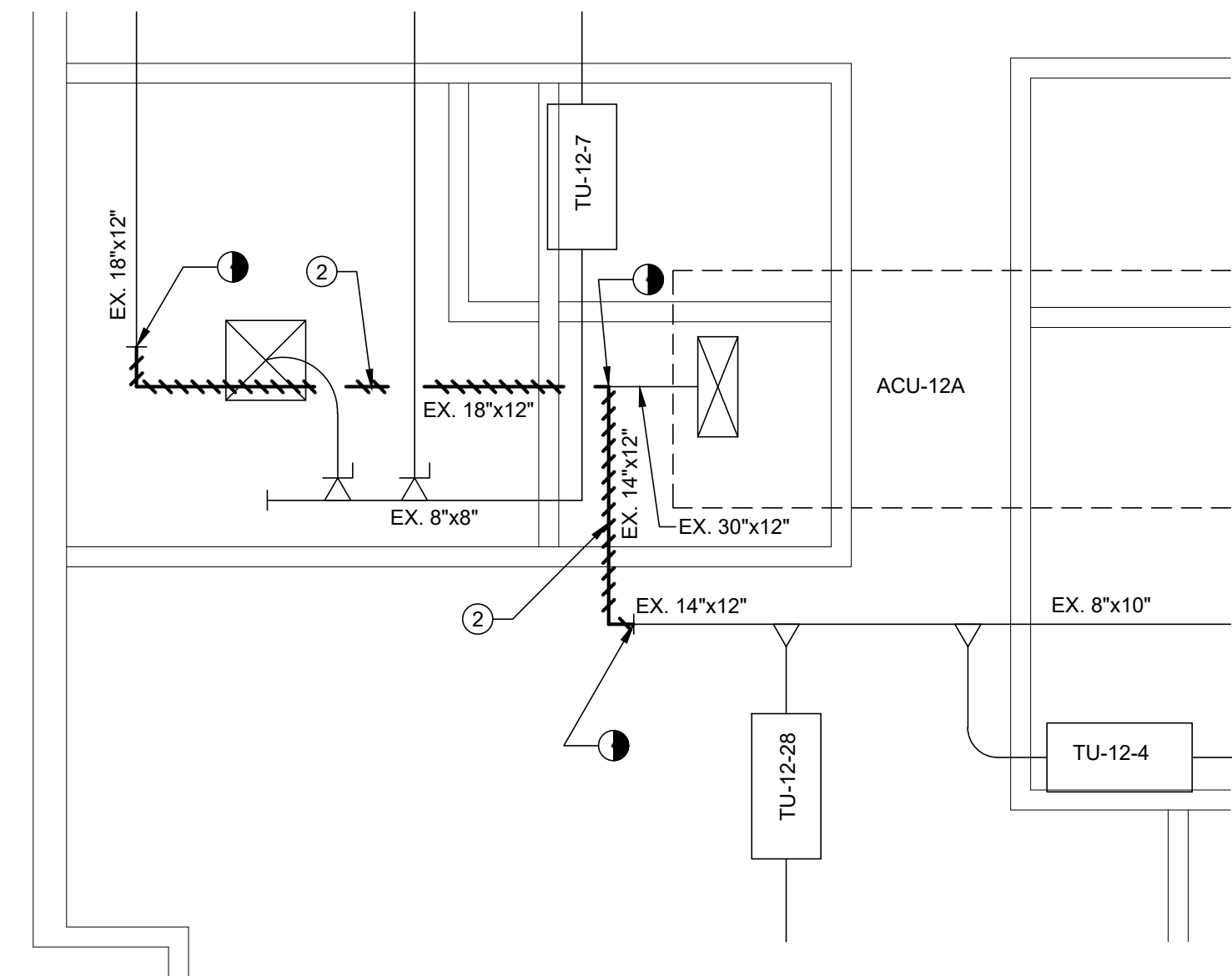
1

NO.	DESCRIPTION	DATE
1	ADDENDUM NO. 1	11/02/2023
2	10% CONSTRUCTION DOCUMENTS	10/25/2022

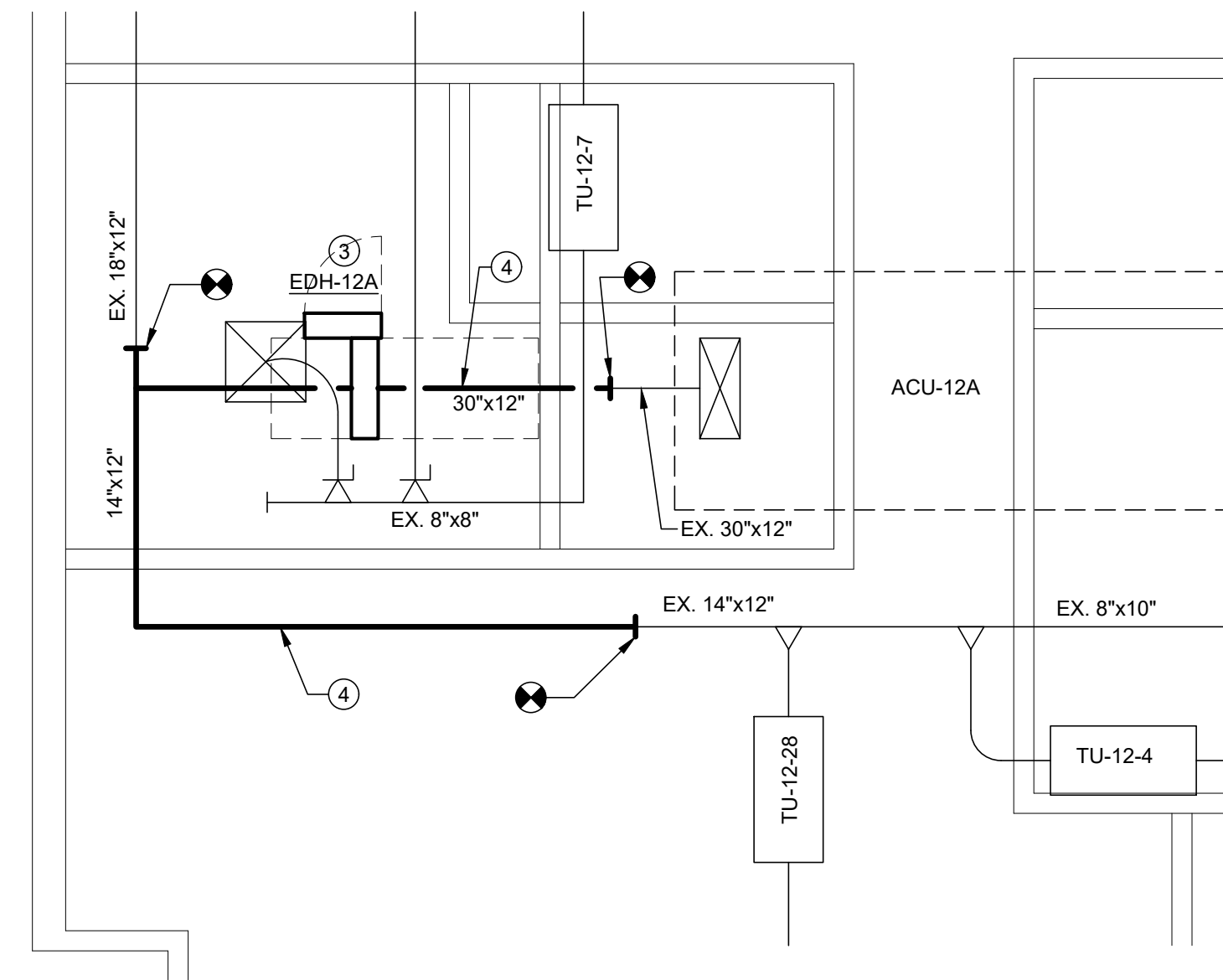
DRAWN BY	RML
CHECKED BY	JRB
PROJECT NO.	202201
SCALE	1/4"=1'-0"

SHEET NOTES

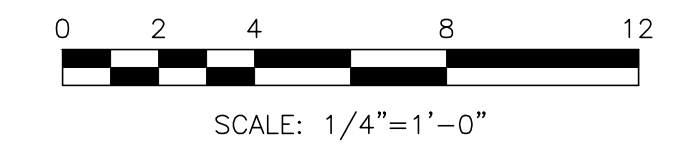
- REMOVE EXISTING DUCTWORK AS INDICATED AND PATCH, SEAL AND REINSULATE DUCT AT MAIN TO MAINTAIN PRESSURE RATING OF DUCTWORK.
- REMOVE EXISTING DUCTWORK AND HANGERS AS REQUIRED TO INSTALL NEW DUCTWORK SHOWN ON NEW WORK PLAN. REMOVE AND RELOCATED ALL DUCT-MOUNTED SMOKE DETECTORS AND FLOW SENSORS AS REQUIRED (SOME MAY NOT BE SHOWN) TO INSTALL NEW DUCTWORK SHOWN ON NEW WORK PLAN.
- PROVIDE SLIP-IN ELECTRIC DUCT HEATER AS SHOWN. CONTRACTOR SHALL TEMPORARILY REMOVE INSULATION AS REQUIRED AND FIELD MEASURE EXISTING DUCT SIZES PRIOR TO RELEASING DUCT HEATERS. PROVIDE MINIMUM UPSTREAM AND DOWNSTREAM DISTANCES TO FITTINGS AND BRANCH TAKE-OFFS AS REQUIRED BY MANUFACTURER. CONTRACTOR SHALL ENSURE THAT PROPER SERVICE CLEARANCES ARE MAINTAINED IN FRONT OF CONTROL BOX. REFER TO CONTROL DIAGRAMS AND SCHEDULE FOR ADDITIONAL INFORMATION. AFTER INSTALLATION OF DUCT HEATER, REPLACE DUCT INSULATION AS REQUIRED.
- PROVIDE DUCTWORK AS INDICATED AND CONNECT TO EXISTING. PROVIDE TRANSITIONS AND OFFSETS AS REQUIRED.
- PROVIDE HARD ROUND DUCT CONNECTIONS TO TERMINAL UNITS. SIZES SHALL BE THE SAME SIZE AS THE INLET SIZED INDICATED IN THE SCHEDULES ON M3.1. PROVIDE OFFSETS AS REQUIRED TO ACCOMMODATE EXISTING FIELD CONDITIONS. DUCTS SHALL NOT INTERFERE WITH SERVICE CLEARANCE REQUIREMENTS OF CONTROL BOX OF ELECTRIC DUCT HEATERS. EQUIVALENT RECTANGULAR DUCTWORK MAY BE USED IF REQUIRED TO ACCOMMODATE EXISTING CONDITIONS. EXTERNALLY INSULATE ALL NEW DUCTS AND SEAL ALL JOINTS AND EDGES VAPOR TIGHT.



DEMOLITION



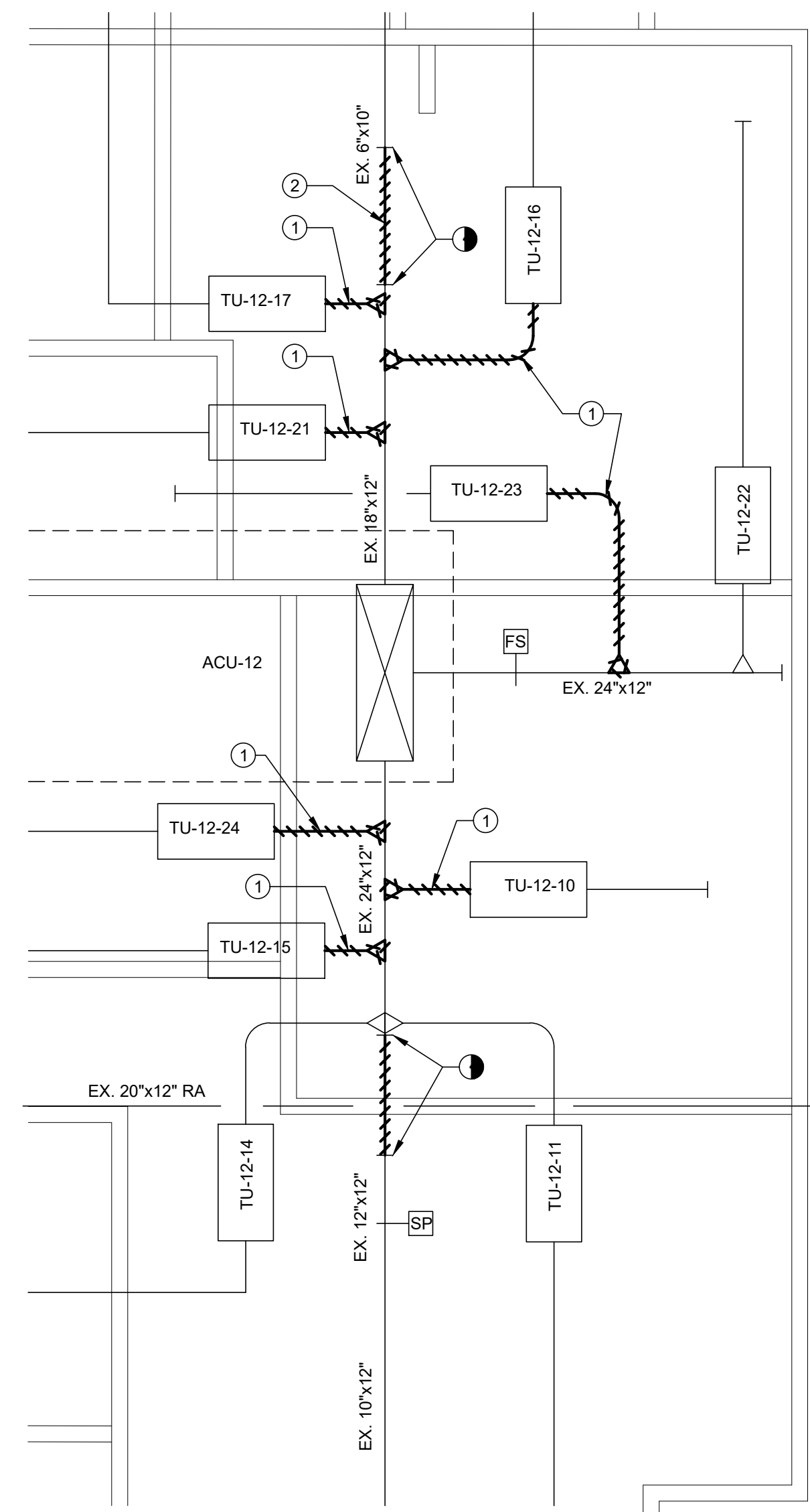
NEW WORK



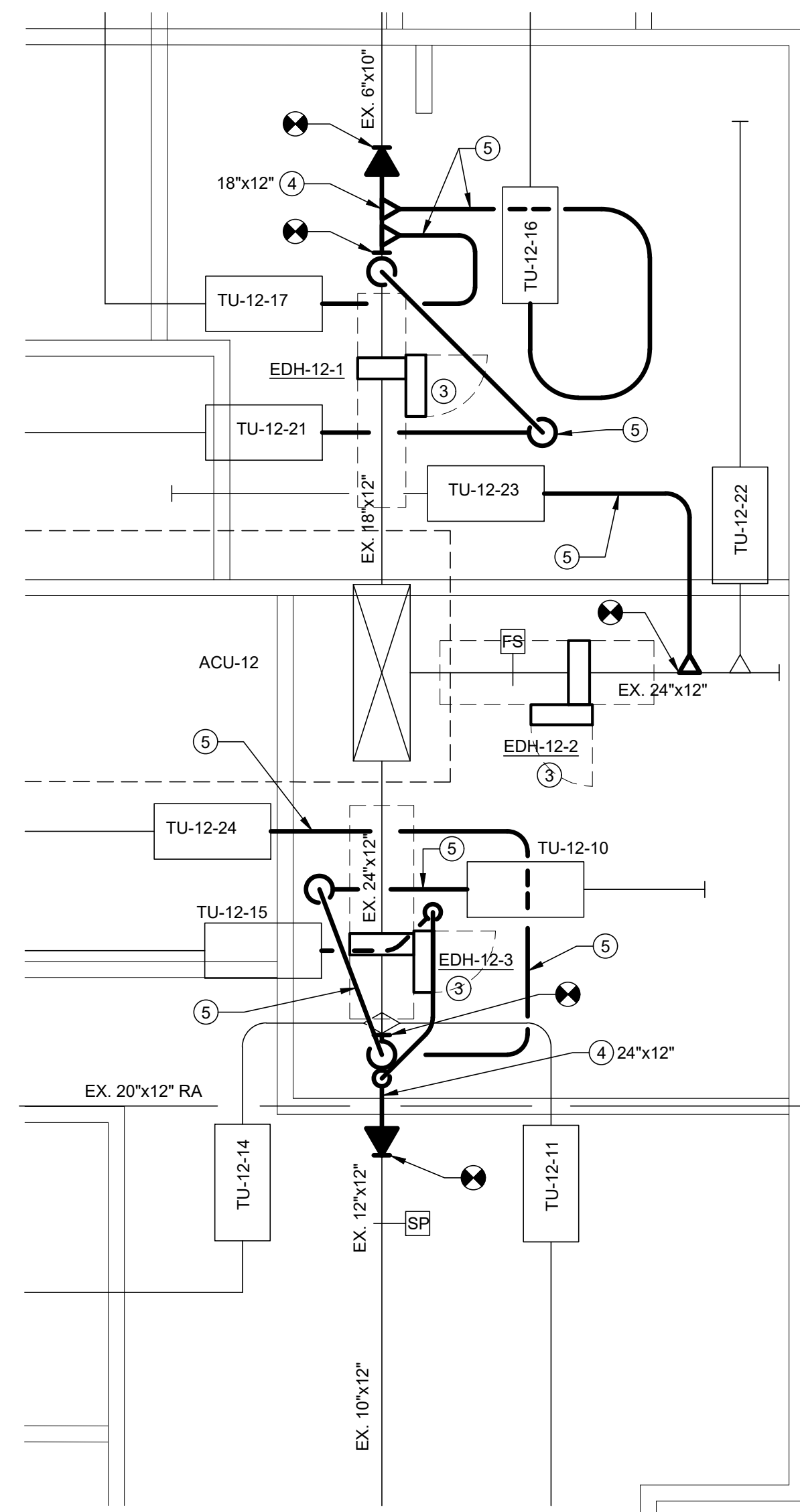
PART PLANS - ACU-12A

SCALE: 1/4" = 1' - 0"

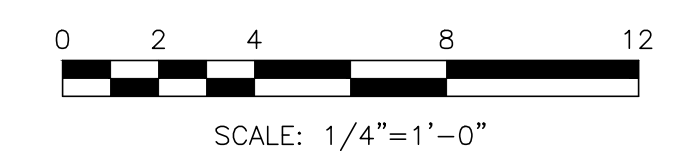
2



DEMOLITION



NEW WORK



PART PLAN - ACU-12

SCALE: 1/4" = 1' - 0"

1